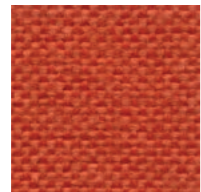


— Jet by Fidivi

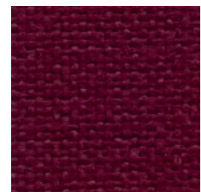
Categoria B7



B7 051



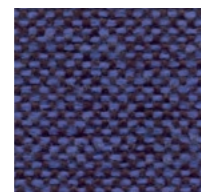
B7 403



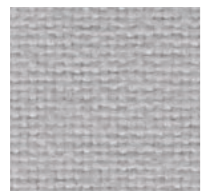
B7 017



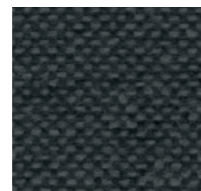
B7 501



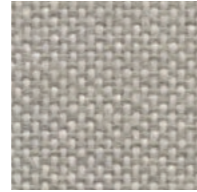
B7 606



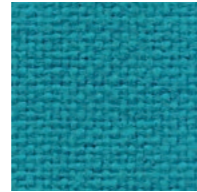
B7 001



B7 806



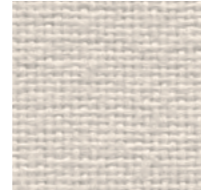
B7 110



B7 091



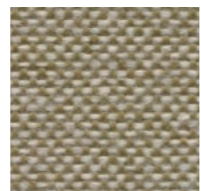
B7 007



B7 100



B7 034



B7 703

Jet by Fidivi
Made in
Italy

Composition

100% polyester (Trevira)

Length

1,40 m

Weight

260 gr/m² ±5%

Abrasion test-Martindale

UNI EN ISO 12947-2 - 65.000 rubs

±10% Pilling - Martindale Method

ISO 12945-2 degree 4-5, 5

Rubbing Fastness - Humid

EN ISO 105X12 4/5 ± ½

Xenotest

EN ISO 105 B02 degree 5-8, 6

Colour fastness to rubbing

EN ISO 105-X12 degree 4-5, 4/5

Fire resistance

UNI 9174 - 8456 Class C1

UNI 9175 Class 1 IM

DIN 4102 Class B1

NF 92501-7 Class M1

NF D 60013 Class AM18

EN 1021-1 & 2

BS Crib 5

BS 7176 Class Medium Hazard

EN 13773 Class 1

OENORM 3800-1 Class B1,Q1,TR1

California TB117

USA NFPA 701

USA NFPA 260

IMO Part 8 Upholstery

Cleaning and maintenance

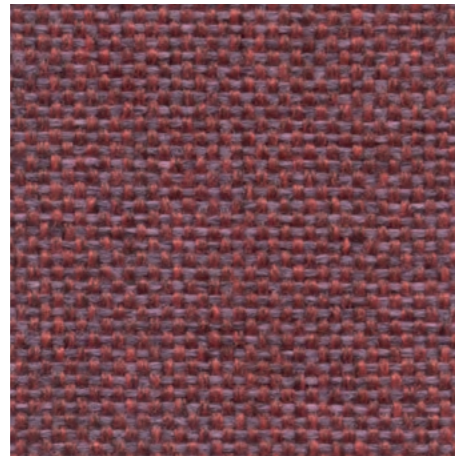
Vacuum regularly.

Wipe clean with a damp cloth.

— Roccia

by Fidivi

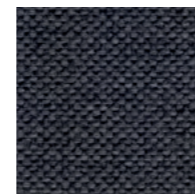
Categoria B8



B8 455



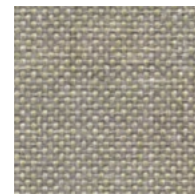
B8 657



B8 854



B8 151



B8 152



B8 555



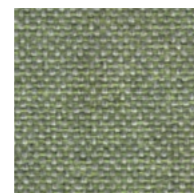
B8 656



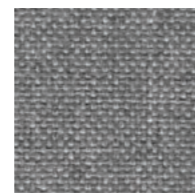
B8 352



B8 251



B8 754



B8 851

Roccia by Fidivi
Made in Italy

Composition

100% polyester (Trevira)

Length

1,40 m

Weight

250 gr/m² ±5%

Pilling – Martindale

ISO 12945-2 degree 4-5, 5

Abrasion resistance – Martindale

UNI EN ISO 12947-2 - 70.000 rubs

±10% Xenotest

EN ISO 105 B02 degree 5-8, 6

Colour fastness to rubbing

EN ISO 105-X12 degree 4-5, 4/5

Fire resistance

UNI 9174 - 8456 Class C1

UNI 9175 Class 1 IM

DIN 4102 Class B1

NF 92501-7 Class M1

NF D 60013 Class AM18

EN 1021-1 & 2

BS Crib 5

BS 7176 Class Medium Hazard

EN 13773 Class 1

OENORM 3800-1 Class B1,Q1,TR1

California TB117

USA NFPA 701

USA NFPA 260

IMO Part 8 Upholstery

Cleaning and maintenance

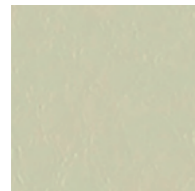
Vacuum regularly.

Wipe clean with a damp cloth.

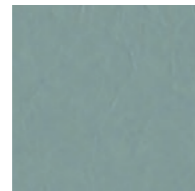
— Ganesha

by Abitex

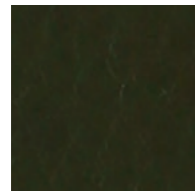
Categoria C2



C2 103



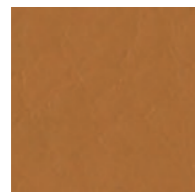
C2 602



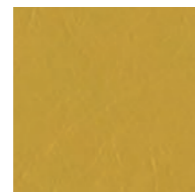
C2 803



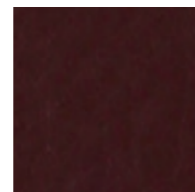
C2 306



C2 404



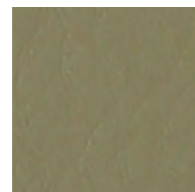
C2 503



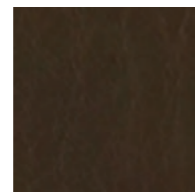
C2 313



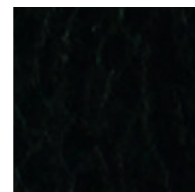
C2 315



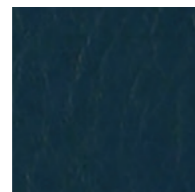
C2 406



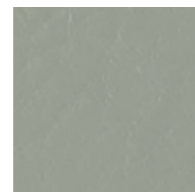
C2 408



C2 200



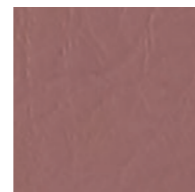
C2 705



C2 600



C2 804



C2 903

Ganesha by Abitex
Made in Italy

Composition

65% polyurethane - 29% polyester - 6% cotton

Length

1,40 m

Width

30 m

Weight

550 gr/m²

Abrasion resistance – Martindale

ISO 5470-2 - 100.000 rubs

Xenotest

ISO 105 B02 degree 6-7

Colour fastness to rubbing

ISO 106/7 X12 dry 5, wet 5

Fire resistance

UNI 9175 Class 1 IM

EN 1021-1 & 2

BS 5852 part 1

BS 5852 crib 5

NF D 60 013

California TB 117-2013

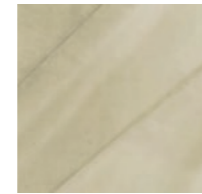
IMO FTP Code 307 part 8

Cleaning and maintenance

Dust gently and, in case of light stains, pass the surface with a damp cloth or neutral detergent, rinse with water without squeezing.

— Aida by Novatex

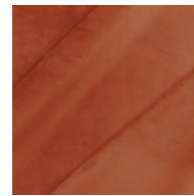
Categoria C3



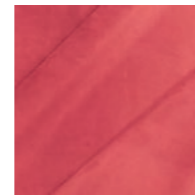
C3 051



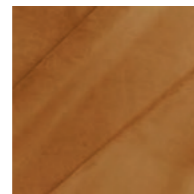
C3 011



C3 015



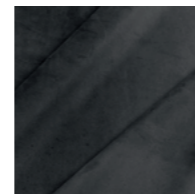
C3 056



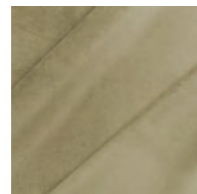
C3 040



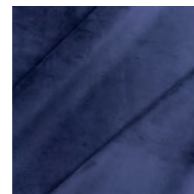
C3 055



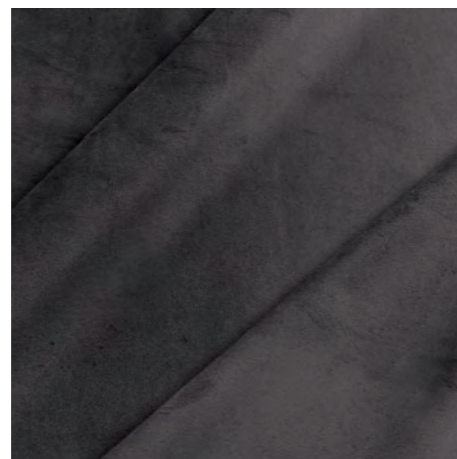
C3 032



C3 041



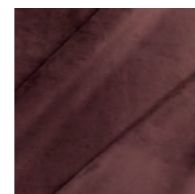
C3 029



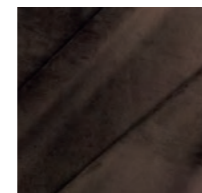
C3 005



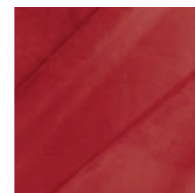
C3 039



C3 057



C3 010



C3 030

Aida by Novatex Made in Italy

Composition

100%

Length

1,40 m

Weight

460 gr/m² ±5%

Pilling – Martindale

≥ 4/5

Abrasion resistance –

Martindale ≥ 50.000 rubs

Tensile strenght – Warp

N 796 ±5%

Elongation 47,2% ±2,36%

Tensile strenght – Weft

N 306 ±5%

Elongation 99,3% ±4,96%

Xenotest

≥ 4

Colour fastness to rubbing ≥ 4/5

Colour fastness to cleaning ≥ 4

Cleaning and maintenance

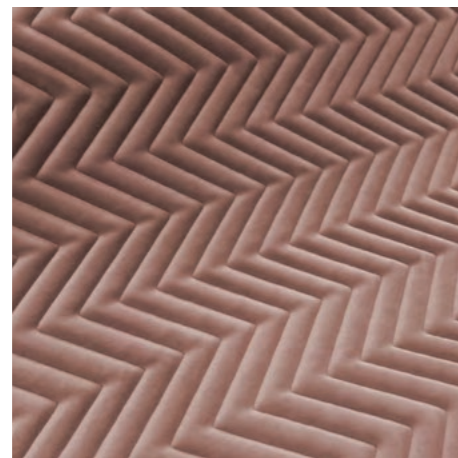
Vacuum regularly.

Wipe clean with a damp cloth.

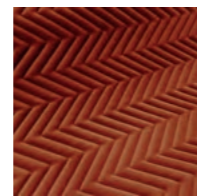
— Aida Quilted Tweed

by
Novatex

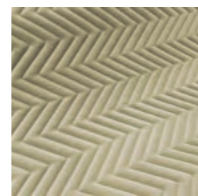
Categoria
C4



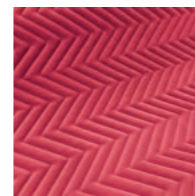
C4 Q11



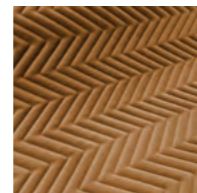
C4 Q15



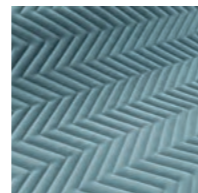
C4 Q51



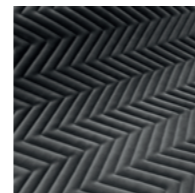
C4 Q56



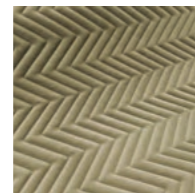
C4 Q40



C4 Q55



C4 Q32



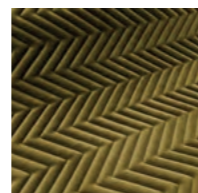
C4 Q41



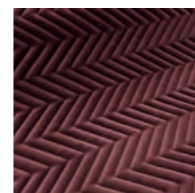
C4 Q29



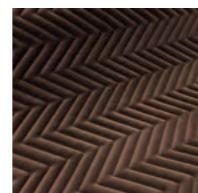
C4 Q05



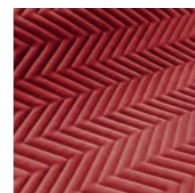
C4 Q39



C4 Q57



C4 Q10



C4 Q30

Aida Quilted Tweed by Novatex
Made in Italy

Composition

70% polyester – 30%

polyurethane Length

1,40 m

Weight

610 gr/m² ±5%

Pilling – Martindale

≥ 4/5

Abrasion resistance – Martindale

≥ 25.000 rubs

Tensile strenght – Warp

N 650 ±5%

Elongation 33,8% ±1,69% Tensile

strenght – Weft

N 880 ±5%

Elongation 25,5% ±1,27%

Xenotest

≥ 4/5

Colour fastness to rubbing ≥ 4/5

Colour fastness to cleaning

≥ 4

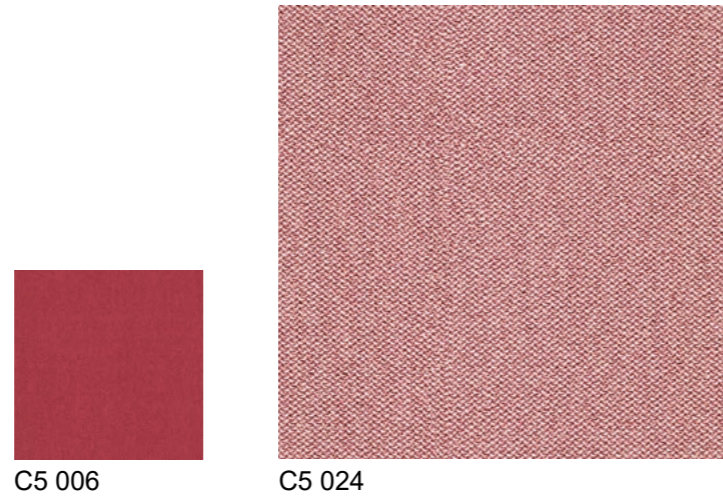
Cleaning and maintenance

Vacuum regularly.

Wipe clean with a damp cloth.

— ERA by Camira

Categoria C5



C5 006

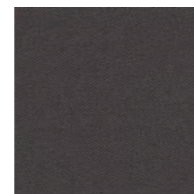
C5 024



C5 046



C5 032



C5 021



C5 002



C5 027



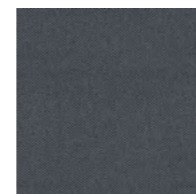
C5 016



C5 001



C5 014



C5 013



C5 040

Era by Camira
Made in United
Kingdom

Composition

100%
polyester

Length

1,40 m

Weight

320 gr/m² ±5%

Abrasion resistance – Martindale

≥ 100.000 rubs

Xenotest

5 (ISO 105 - B02)

Colour fastness to dry rubbing

ISO 105 - X12, 4

Colour fastness to wet rubbing

ISO 105 - X12, 4

Fire resistance

EN 1021 - 1 (cigarette)

EN 1021 - 2 (match)

BS 7176 Low Hazard

EN 13501 - 1 Adhered Class B, s1, d0

EN 13501 - 1 Un-adhered Class C, s1, d0

BS 5852 Ignition source 5 with EnviroFlam5
(over CMHR 50kg/m³ foam)

BS 7176 Medium Hazard with EnviroFlam5
(over CMHR 50kg/m³ foam)

Certifications

certified to oeko-tex® standard 100

Cleaning and maintenance

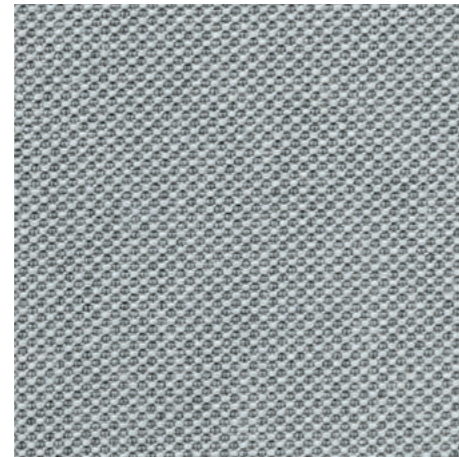
Washable to 60 ° C.

Vacuum regularly.

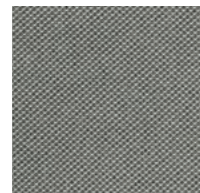
Wipe with a damp cloth using soap and water
or use proprietary upholstery shampoo. For
deeper cleaning use steam, bleach, alcohol or
professionally dry clean.

— NORFOLK by Vescom

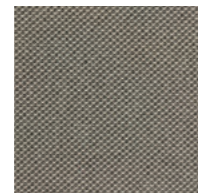
Categoria D4



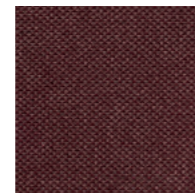
D4 007



D4 006



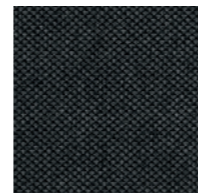
D4 005



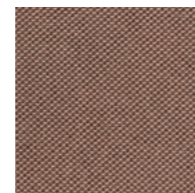
D4 001



D4 011



D4 009



D4 002



D4 015

Norfolk by Vescom
Made in Netherlands



Description

two-tonal upholstery fabric made from 100% recycled plastic waste, an all-over graphic grid with a three-dimensional effect

Composition

100% recycled polyester FR

Length

±1,48 m, ±58 inches

Weight

±624 gr/m¹, ±20 oz/yd¹

Flame retardancy

EN 1021/1-2, BS 5852 crib 5, NF D 60-013 (AM 18), DIN 4102 B1, UNI 9175 classe 1.IM, Cal TB 117, NFPA 260 class 1, IMO 2010 FTP part 8

Abrasion

ISO 12947-2 70.000 rubs martindale
ASTM D4157 100.000 double rubs wyzenbeek

Pilling

ISO 12945-2 4-5 (scale 1-5)

Colorfastness to crocking

ISO 105-X12 wet 4-5 / dry 4-5 (scale 1-5)

Colorfastness to light

ISO 105-B02 6 (scale 1-8)

Seam slippage

ISO 13936-2 warp 3 mm / weft 2 mm

Breaking strength

ISO 13934-1 warp 1320 N / weft > 2500 N

Certifications

certified to oeko-tex® standard 100

Cleaning and maintenance

Washable to 60 ° C.

Gentle claeing with PCE.

No tumble dryer.

Iron at max. 150° C.

Do not bleach.

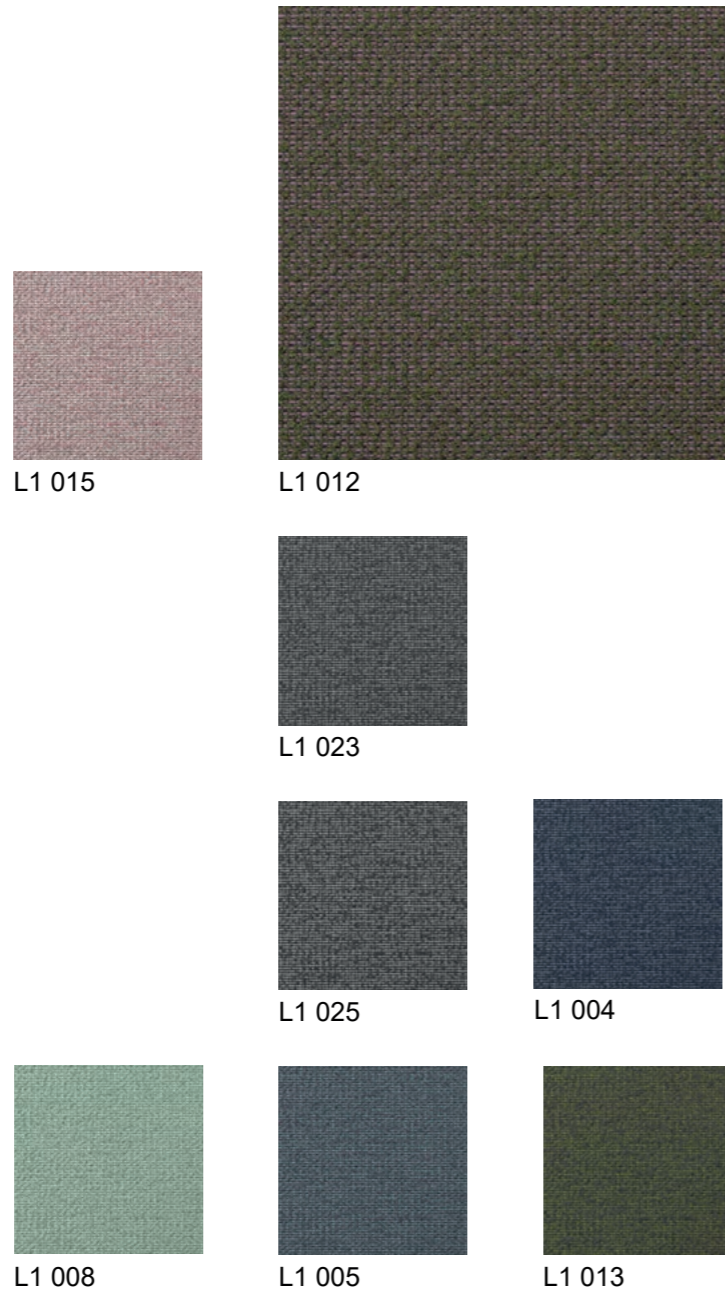
Shrinkage

warp -2% / weft -3%

— AUCKLAND by Vescom

Categoria L1

Auckland by Vescom
Made in Netherlands



Description

a boucle upholstery fabric with a two-tonal, playful, non-directional grid

Composition

76% recycled polyester FR / 24% polyester FR

Length

±1,41 m, ±56 inches

Weight

±704 gr/m¹, ±23 oz/yd¹

Flame retardancy

EN 1021/1-2, BS 5852 crib 5, NF P 92503-507 M2, NF D 60-013 (AM 18), DIN 4102 B1, UNI 9175, classe 1.IM, Cal TB 117, NFPA 260 class 1 IMO 2010 FTP part 8

Abrasion

ISO 12947-2 60.000 rubs martindale
ASTM D4157 80.000 double rubs wyzenbeek

Pilling

ISO 12945-2 4 (scale 1-5)
ASTM D3511 5 (scale 1-5)

Colorfastness to crocking

ISO 105-X12 wet 4-5 / dry 4-5 (scale 1-5)
AATCC 8 wet 5 / dry 5 (scale 1-5)

Colorfastness to light

ISO 105-B02 6 (scale 1-8)
AATCC 16.3: 40 hours 5 (scale 1-5)

Seam slippage

ISO 13936-2 warp 3 mm / weft 3 mm
ASTM D4034 warp 128 lbs / weft 112 lbs

Breaking strength

ISO 13934-1 warp 1550 N / weft 2500 N
ASTM D5034 warp 220 lbs / weft 402 lbs

Certifications

certified to oeko-tex® standard 100

Cleaning and maintenance

Washable to 70 ° C.
Gentle cleaning with PCE.
No tumble dryer.
Iron at max. 150° C.
Do not bleach.

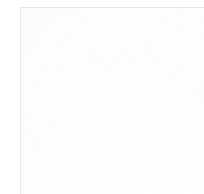
Shrinkage

warp -2.4% / weft -1.4%

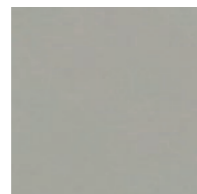
— Extrema Au Ikon

by Flukso

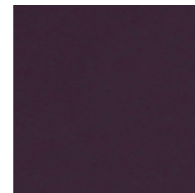
Categoria L6



L6 130



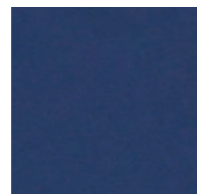
L6 243



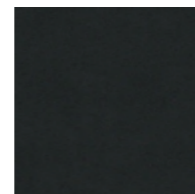
L6 830



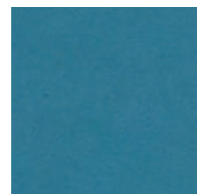
L6 930



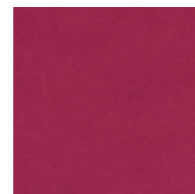
L6 203



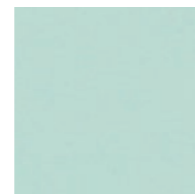
L6 223



L6 183



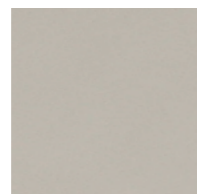
L6 133



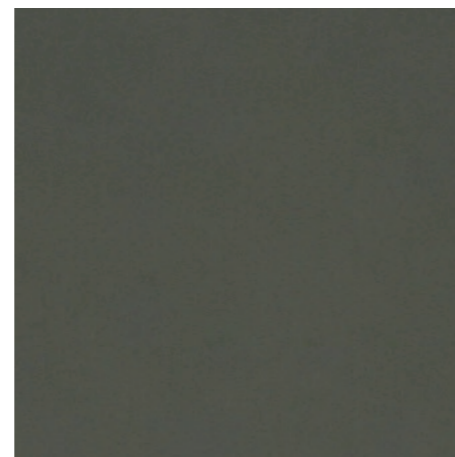
L6 173



L6 230



L6 330



L6 530

Extrema Au Ikon by Flukso
Made in Italy

Composition

63% polyurethane – 29% cotton – 8% PES

Width

140 cm

Weight

480 gr/m²

Abrasion resistance

UNI EN ISO 12947-2

150.000 rubs

Xenotest

UNI EN ISO 105-B02

5/6 blue scale

Colour fastness to sweat

UNI EN ISO 105-E04

4/5 grey scale

Bending strenght

UNI 4818-13

150.000 rubs

Tensile strenght

UNI EN ISO 1421

N/50mm

450 long. - 400 transv.

Elongation at break

UNI EN ISO 1421

10% long. - 20% transv.

Tear strenght

UNI EN ISO 9073-4

N 35 long. - N 35 transv.

Fire resistance

BS 5852 CRIB 5

BS 5852-1 PART I

IMO RESOLUTION A.652 (16) :1989

EN 1021-1

EN 1021-2

UNI 9175 CLASS 1IM

TB 117 : 2013

Cleaning and maintenance

Dust gently and, in case of light stains, pass the surface with a damp cloth or neutral detergent, rinse with water without squeezing.

— Blazer by Camira

Categoria L7



L7 03B



L7 030



L7 063



L7 03E



L7 02T



L7 086



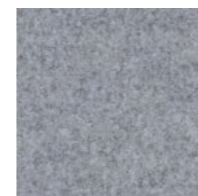
L7 01R



L7 03D



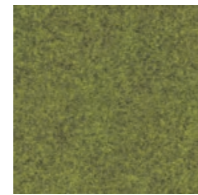
L7 02R



L7 028



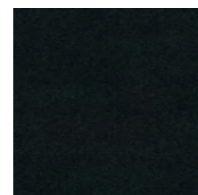
L7 033



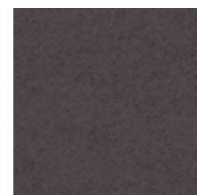
L7 01F



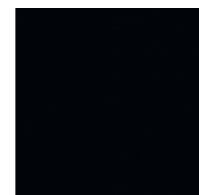
L7 062



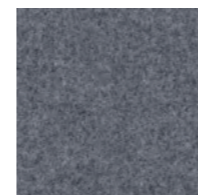
L7 01M



L7 031



L7 008



L7 01E



L7 021



L7 02Y

Blazer by Camira
Made in United Kingdom

Composition

100% virgin wool - non metallic dyestuffs

Length

1,40 m

Weight

460 gr/m² ±5%

Abrasion resistance – Martindale

≥ 50.000 rubs

Xenotest

5 (ISO 105 - B02)

Colour fastness to dry rubbing

ISO 105 - X12, 4

Colour fastness to wet rubbing

ISO 105 - X12, 4

Fire resistance

EN 1021 - 1 (cigarette)

EN 1021 - 2 (match)

BS 7176 Low Hazard

NF D 60-013

ÖNORM B 3825 & A 3800-1

(58kg/m³ CMHR Foam)

UNI 9175 Classe 1 IM

BS 476 Part 7 Class 1

EN 13501-1 Adhered Class D, s1, d0

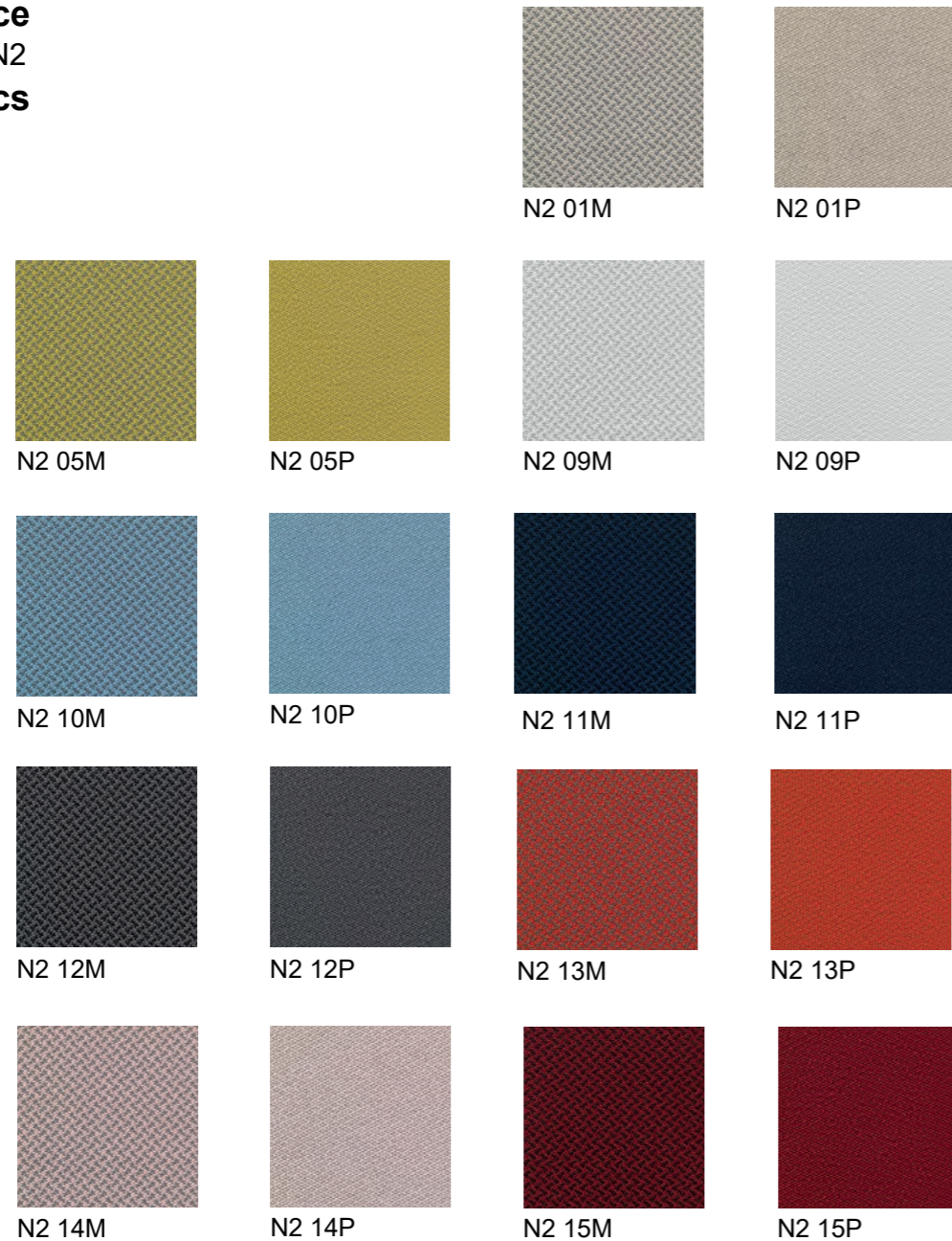
Cleaning and maintenance

Vacuum regularly.

Professionally dry clean or wipe clean with a damp cloth.

— Deans by Vescom

double face
Categoria N2
fabrics



Deans by Vescom Made in
Netherlands

Composition

100% polyester

Length

1,38 m

Weight

861 gr/m

Pilling – Martindale

ISO 12945-2 4 (scale 1–5)

ASTM D3511 3 (scale 1–5)

Abrasion resistance – Martindale 12 KPA ISO

12947–2 110.000 rubs Martindale

ASTM D4157 100.000 double rubs

wyzenbeek Xenotest

ISO 105–B02 6-7 (scale 1–8)

AATCC 16.3: 40 hours 5 (scale 1–8)

Colour fastness to dry rubbing

ISO 105–X12 dry 4-5 (scale 1–5)

AATCC 8 dry 5 (scale 1–5)

Colour fastness to wet rubbing

ISO 105–X12 wet 4-5

AATCC 8 wet 5

Seam slippage

ISO 13936–2 warp 4.3 mm/ weft 3 mm ASTM

D4034 warp 39 lbf / weft 85 lbf

Fire resistance

EN 1021/ 1– 2

BS 5852, crib 5

NF P 92 / 503 – 507, M1

DIN 4102, B1

IMO 2010 FTP part 8

UNI 9175, classe 1

Cal TB 117

NFPA 260, class 1

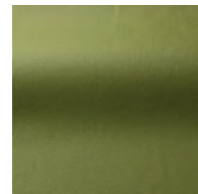
Cleaning and maintenance

Vacuum regularly.

Wipe clean with a damp cloth.

— Leather by Futura Leathers

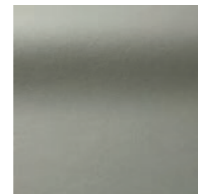
Categoria F1



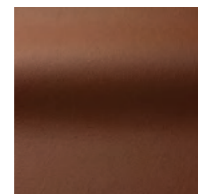
F1 104



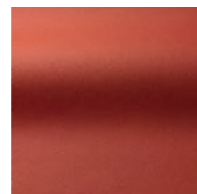
F1 329



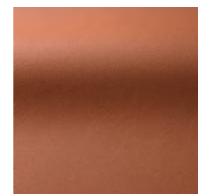
F1 316



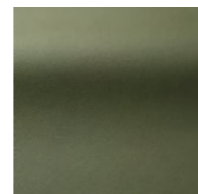
F1 165



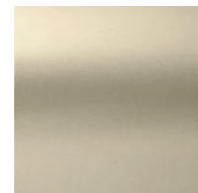
F1 387



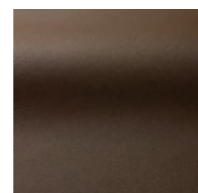
F1 305



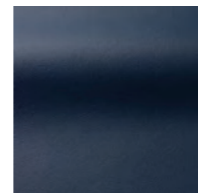
F1 371



F1 332



F1 340



F1 140



F1 360



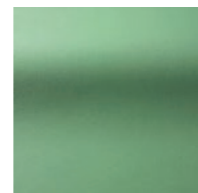
F1 611



F1 168



F1 171



F1 170

Leather by Futura Leathers
Made in Italy

Thickness

ca. 0,90 mm

Average size

4,20 m²

Raw material

Bovine leather

Colour fastness to rubbing

Nr. 500 dry rubs

IUF 450 / UNI EN ISO 11640

≥ 4 grey scale

Nr. 150 wet rubs

IUF 450 / UNI EN ISO 11640

≥ 4 grey scale

Nr. 80 alkaline ph 8

IUF 450 / UNI EN ISO 11640

≥ 4 grey scale

Flexing endurance

IUP 20

UNI EN ISO 5402

≥ 30.000

Tear strenght

IUP 40

UNI EN ISO 3377-1

≥ 20N

Adhesion

IUF 470

UNI EN ISO 11644

≥ 3.50 N/cm

Xenotest

IUF 402

UNI EN ISO 105-B02

5 blue scale

Fire resistance

UNI EN ISO 1021-1/2

pass

BS 5852 1990 Sec. 4 NI/0-1

pass

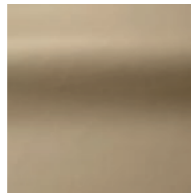
California T.B. 117

pass

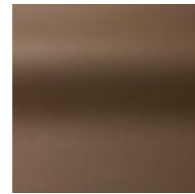
Leather complies with the strict regulations and EU Directives covering the use and presence of PCP, CFC, Chromo VI, Dimethylfumarate (DMF) and Azo dyestuffs during the tanning process

— Extra Leather by Futura Leathers

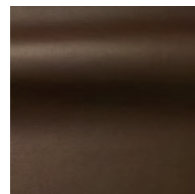
Categoria G1



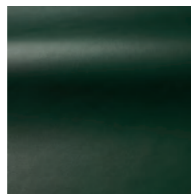
G1 339



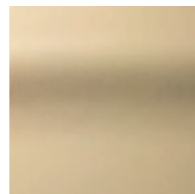
G1 332



G1 611



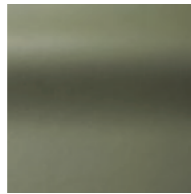
G1 545



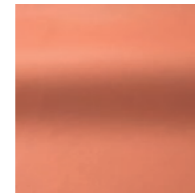
G1 340



G1 636



G1 336



G1 448



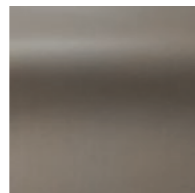
G1 252



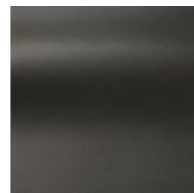
G1 701



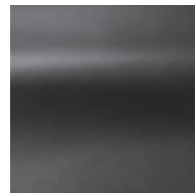
G1 410



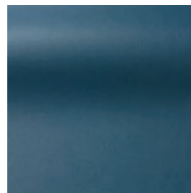
G1 221



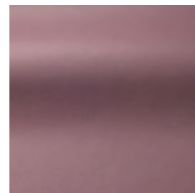
G1 250



G1 614



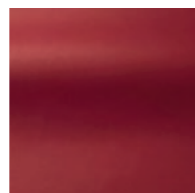
G1 613



G1 704



G1 500



G1 605

Extra Leather by Futura Leathers
Made in Italy

Thickness

ca. 0,90 mm

Average size

4,20 m²

Raw material

Bovine leather from Australia/New Zealand/Europe Xenotest

IUF 402

UNI EN ISO 105-B02

5 blue scale

Colour fastness to rubbing

Nr. 500 dry rubs

IUF 450 / UNI EN ISO 11640

≥ 4 grey scale

Nr. 150 wet rubs

IUF 450 / UNI EN ISO 11640

≥ 4 grey scale

Nr. 80 alkaline ph 8

IUF 450 / UNI EN ISO 11640

≥ 4 grey scale

Flexing endurance

IUP 20

UNI EN ISO 5402

≥ 30.000

Tear strenght

IUP 40

UNI EN ISO 3377-1

≥ 20N

Adhesion

IUF 470

UNI EN ISO 11644

≥ 3.50 N/cm

Fire resistance

UNI EN ISO 1021-1/2

pass

BS 5852 1990 Sec. 4 NI/0-1

pass

California T.B. 117

pass

Extra leather complies with the strict regulations and EU Directives covering the use and presence of PCP, CFC, Chromo VI, Dimethylfumarate (DMF) and Azo dyestuffs during the tanning process

— Steelcut Trio 3

design by Frans Dijkmeijer & Giulio Ridolfo by Kvadrat

Categoria H2



H2 916



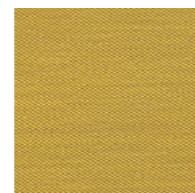
H2 336



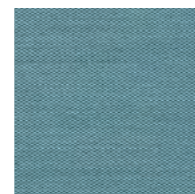
H2 124



H2 636



H2 453



H2 983

Steelcut Trio 3 by Kvadrat
Made in Denmark

Composition

90% wool - 10% nylon

Width

140 cm

Weight

770 gr/m

Pilling

EN ISO 12945 - 4

Abrasion resistance – Martindale

EN ISO 12947

100.000 rubs

Xenotest

ISO 105-B02 - 5/7

Fire resistance

AS/NZS 1530.3

AS/NZS 3837 class 2

BS 5852 Crib 5 with treatment

BS 5852 part 1

DIN 4102 B2

EN 1021-1/2

IMO FTP Code 2010: Part 8

NF D 60 013

NFPA 260

Önorm B1/Q1

SN 198 898 5.3 with treatment

UNI 9175 1IM

US Cal. Bull. 117-2013

Benefits of wool

The wool:

is a renewable resource

is very comfortable because of its ability to absorb and give off humidity

is flame retardant

is biodegradable

is naturally soil resistant

ages with grace

Environmental benefits

Complies with EU Eco Flower

No use of AZO dyes

No use of dyes containing heavy metals/complies with ETAD norm

No content of formaldehyde

No use of brominated flame retardants Not bleached

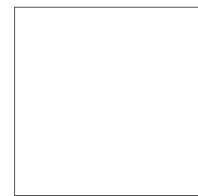
Biodegradable spinning oil

Complies with REACH

Cleaning and maintenance

Vacuuming and dry cleaning.





15 - matte white
RAL 9003



16 - matte burro
RAL 9001



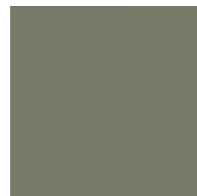
13 - matte rose
RAL 4009



19 - matte mint
RAL 6019



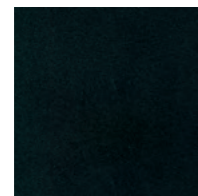
18 - matte cappuccino
RAL 1019



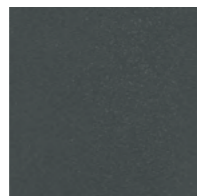
9 - matte army
RAL 7003



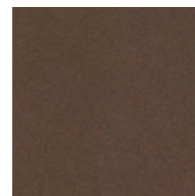
2 - matte black
RAL 9005



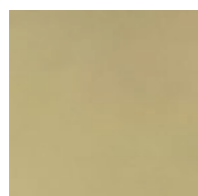
10 - embossed antracite



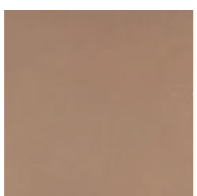
21 - embossed porfido



20 - embossed corten



23 - metal gold



24 - metal copper



25 - metal cacao



22 - metal diamond

— Paintings & chromium platings

Paintings & chromium platings

Matte White, Matte Burro, Matte Rose, Matte Mint, Matte Cappuccino, Matte Army, Matte Black Varnish made with chrome and lead-free pigments. Two-component enamel with polyurethane and acrylic resins. Excellent resistance to chemical and atmospheric agents, detergents, fuels and lubricants.

Embossed Antracite, Embossed Porfido

“AkzoNobel” registered trademark Interpon 610. Polyester powder coatings TGIC-free Paintings with great light and warmth fastness. High resistance to direct sunlight and atmospheric agents.

Embossed Corten

2k two-component varnish, Corten is able to confer any support the aspect of the most natural oxidation of the real corten steel, giving at the same time a particular movement to all those supports which due to their chemical and physical nature cannot get oxidized. The effect Materic Corten does not release any powder of iron oxide.

Metal Gold, Metal Copper, Metal Cacao

1k one-component varnish in imitation of the flat galvanic finishings, it gives light and great brightness to the treated support. Matt metallic final product. highly bright, with anti-scratch performing characteristics and resistant against the main cleaning products and food, through the employment of specific cycles of painting. Apt for supports made on metal, plastic, wood and composites, both for interior and for outdoor employments.



Metal Diamond

2k two-component varnish with a final bright and diamond effect, in imitation of the goldsmith's art 20 gloss, without overpainting with a top coat. Apt both for interior and for outdoor employment. Highly resistant against usury and abrasion.

EPOXIA

6 avenue Charles de Gaulle
78150 Le Chesnay
+33 1 39 66 00 77
contact@epoxia.com
www.epoxia.com



Rejoignez-nous sur nos réseaux sociaux

