

Tinker



Materials & Maintenance

solid wood

Les imperfections naturelles du bois, telles que les variations de couleur et de texture, les nœuds et les cernes d'arbres, ne sont pas considérées comme des défauts et des caractéristiques indésirables, mais plutôt comme des valeurs du matériau naturel utilisé. Notre bois est traité avec de l'huile ou de la laque de manière à ce que le matériau apparaisse aussi naturellement que possible, soulignant l'apparence d'un anneau d'arbre ouvert. La laque de couleur ne remplit pas complètement les pores du bois pour mettre en évidence la qualité naturelle du matériau, et les cernes d'arbres restent visibles. Il n'y a pas d'anneaux d'arbre visibles en contreplaqué laqué. L'huile et la laque sur toutes les surfaces en bois donnent toujours un effet mat, ce qui est la norme visuelle de Prostoria pour le traitement et la protection du bois.

Dossier bois laqué



oak light



oak nature



walnut
european

metal

Tous les produits et éléments métalliques enduits de poudre epoxy ont une finition mate, qui est la norme visuelle de Prostoria utilisée dans le traitement et la protection des matériaux métalliques. Les pièces métalliques soudées à la main peuvent présenter des imperfections mineures qui n'affectent pas la qualité ou la fonction du produit, mais reflètent le travail manuel de nos artisans.



black

Materials & Maintenance

table tops

Fenix NTM is a table top finish in the form of a thin laminate that is pressed to the bottom and top of the mdf. The sides of the mdf are lacquered. Fenix is a durable material that does not show fingerprints. It can be cleaned using a damp soft cloth soaked in warm water or a solution of water and mild detergent. We recommend the use of the Fenix maintenance kit (contact your nearest salon or the dealer where you purchased the product). Damages such as scratches that are not cut in can be treated thermally using an iron and a damp cloth.

MDF + FENIX NTM



0720
black



0724
dark grey



0725
light grey



0718
beige



0032
white

TRESPA HPL

Trespa Meteon outdoor table tops have a compressed surface, virtually pore-free, making them impervious to contamination. This is why Trespa Meteon® is highly resistant to most chemicals, including many non-aggressive and aggressive cleaning agents.

Do not use abrasive or polishing cleaners. Use only clean sponges and soft cloths. Algae and mould will not penetrate the pores of the material so they are easy to clean just like dust, stains or fingerprints. You can wash them off using a universal household cleaner. Rinse and wipe the board using a soft cloth to avoid any traces remaining after washing.



L 90.0.0
black



L 21.5.1
grey



L 05.0.0
white

GLASS

Glass surfaces can be cleaned with a well-drained soft cloth soaked in a mixture of alcohol and water or glass cleaner. Wipe the surface with a dry, lint-free cloth. Avoid products containing acetone, ammonia, chlorine, and solvents, abrasives, and furniture wax.



PARSOL GREY



PARSOL BRONZE

Materials & Maintenance

table tops

Compact boards are high-pressure thermoset laminates (HPL) obtained by pressing under high pressure and high temperature. Refined with decor on both sides, this multi-layer material is at the same time extremely resistant and long-lasting as well as easy to maintain. It also provides high resistance to scratches, wear, solvents, chemicals, moisture and heat. The surface of Compact boards is extremely resistant to dirt, but if necessary it can be treated with standard non-abrasive cleaners.

COMPACT BOARDS



**COMPACT
BLACK**

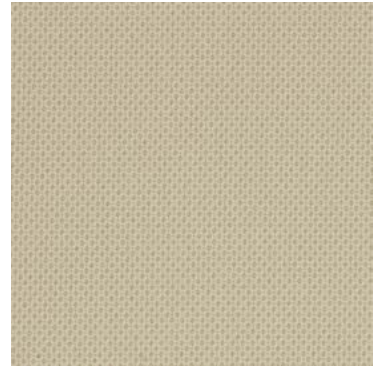


**COMPACT
WHITE**

Category 200

Contour

collection: Fabric
composition: 100% polyester
width: 140 cm +/- 2 cm
piling: 4-5
abrasion resistance: 85,000 cycles
light fastness: 5-7
rubbing fastness: 4-5 dry and wet



61138



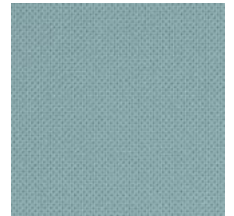
61215



62041



61216



66213



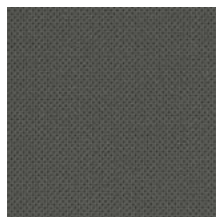
67033



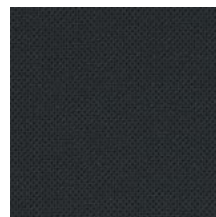
68238



68239



60003

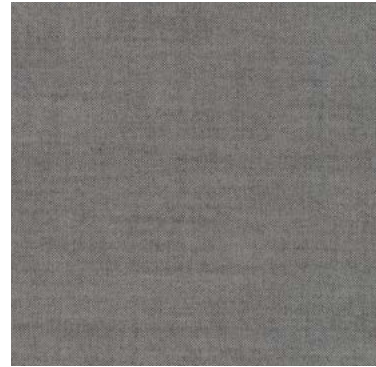


68130

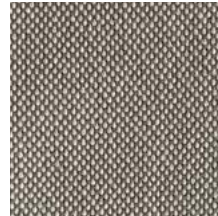
Category 200

Garc Bic

collection: Fabric
composition: 100% cotton
width: 140 cm +/- 3 cm
abrasion resistance: 30.000 cycles
light fastness: class 4-5



111



230



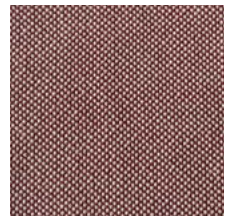
420



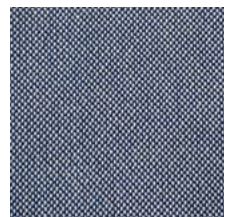
236



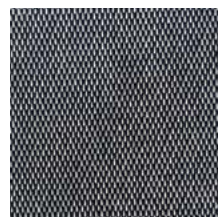
232



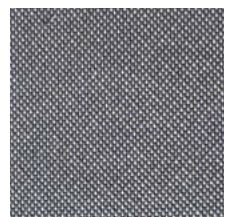
234



238



421



422

Category 300

Atlas

collection: Fabric
composition: 90% new wool worsted,
10% nylon
width: 150 cm +/- 2 cm
piling: 4-5
abrasion resistance: 100.000 cycles
light fastness: class 6-7
rubbing fastness: 4-5 dry and wet



461



561



501



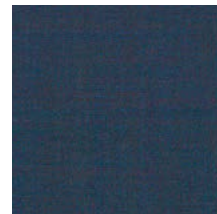
621



681



641



861



961



981



111

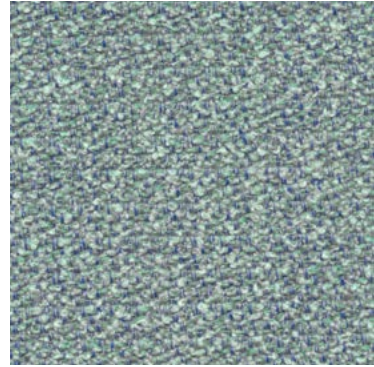


161

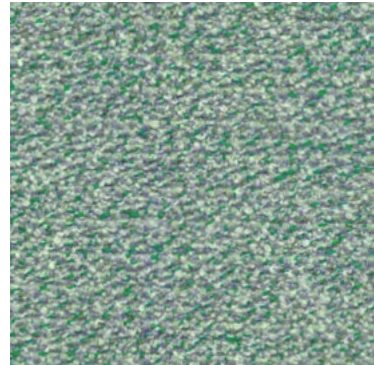
Category 300

Boemian

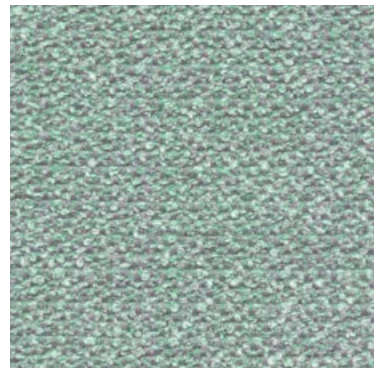
collection: Fabric
composition: 5% cotton, 13% linen,
25% viscose, 15% wool, 25% PL, 15% PC, 2% PA
width: 137 cm +/- 3 %
abrasion resistance: 45.000 cycles
light fastness: class 4-5



040



031

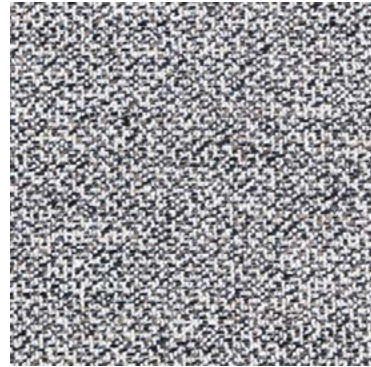


030

Category 300

Crepe

collection: Fabric
composition: 50% cotton, 33% viscose,
17% linen
width: 140 +/- 3 %
piling: 3-4
abrasion resistance: 35.000 cycles
light fastness: class 4-5



034



039



103

Category 300

Duffy

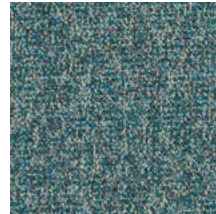
collection: Fabric
composition: 81% Polyester, 19% Cotton
width: 140 cm +/-2%
piling: 4
abrasion resistance: 100.000 cycles
light fastness: class 6



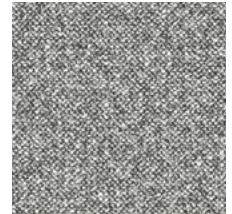
009



007



041



018



023

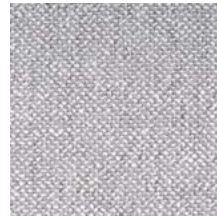
Category 300

Gordon

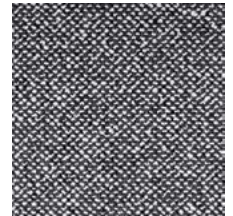
collection: Fabric
composition: 31% viscose, 28% cotton, 20% wool,
10% polyamide 6% polyester 5% other
width: 140 cm +/- 2 cm
piling: 3-4
abrasion resistance: 30.000 cycles
light fastness: class 5
rubbing fastness: 4-5 wet and dry



03/1



90/1



98/2

Category 300

Mystic

collection: Fabric
composition: 100% polyester
width: 140 cm
piling: 5
abrasion resistance: 150.000 cycles
light fastness: class 4-5



01



032



012



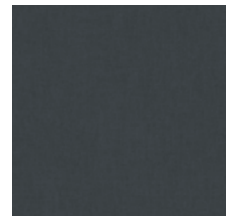
105



062



056



311



395



069



214

Category 300

Orsetto

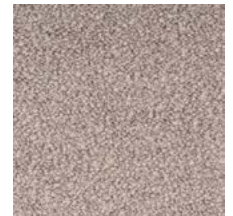
collection: Fabric
composition: 34% viscose, 33% acrylic,
17% wool, 8% polyester, 4% flax, 4% cotton
width: 138-140 cm
piling: 5
abrasion resistance: 80.000 cycles
light fastness: class 5
rubbing fastness: 5 dry, 3-4 wet



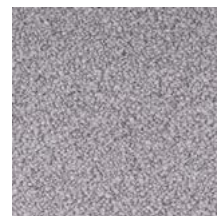
01/1



01/2



05/10



02/22



98/21

Category 300

Tundra

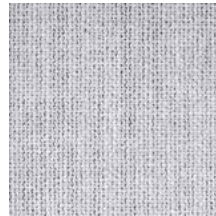
collection: Fabric
composition: 42% viscose, 36% cotton
16% acrylic, 6% polyester
width: approx 140 cm
piling: 3-4
abrasion resistance: 30.000 cycles
light fastness: class 5
rubbing fastness: 4-5 wet and dry



003



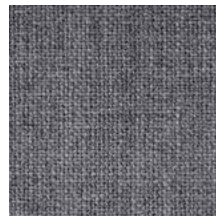
004



008



010



011

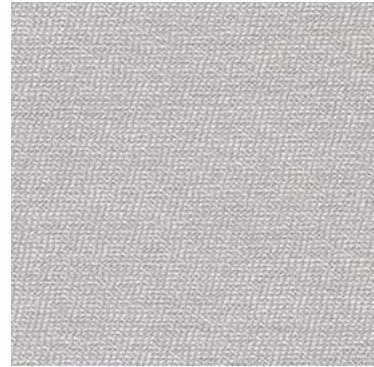


012

Category 400

Arco

collection: Fabric
composition: 95% WV 5% PA
width: 140 cm
piling: 4-5
abrasion resistance: 70.000 cycles
light fastness: class 5
rubbing fastness: 4-5 dry and wet



arctic



corn



jade



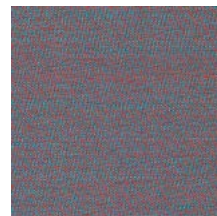
safran



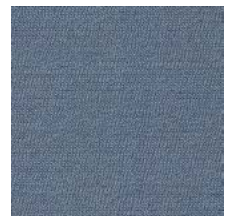
vivid



breeze



samba



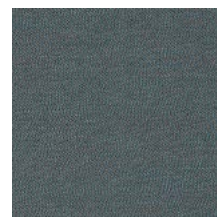
azur



mare



aqua



pond



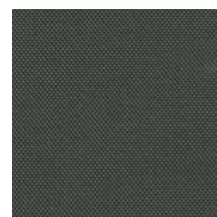
forest



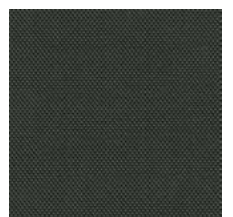
fels



kies



carbon

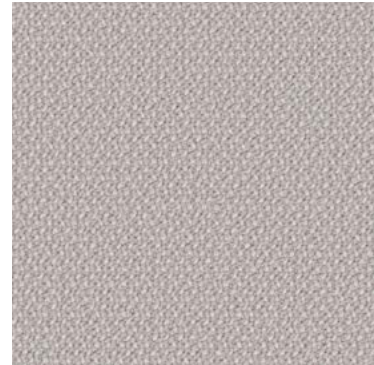


lanoso

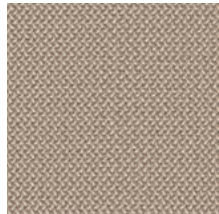
Category 400

Credo

collection: Fabric
composition: 95% wV, 5% PA
width: 140 cm
piling: 4-5
abrasion resistance: 100.000 cycles
light fastness: class 5



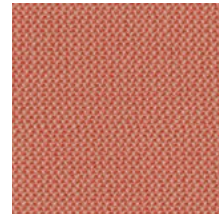
calla



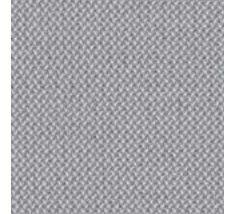
macadamia



aureo



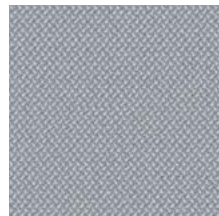
grapefruit



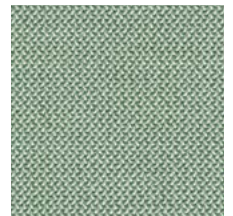
chalk



zinn



diamond



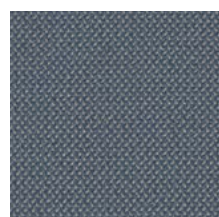
aloe



lake



jaspis



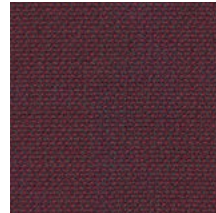
sea



navy

Category 400

Credo



rubin



carbon



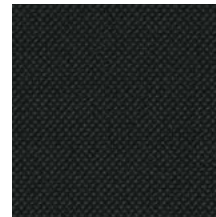
fango



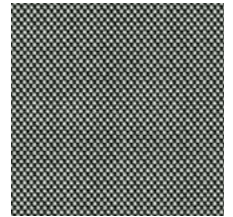
schiefer



asphalt



black

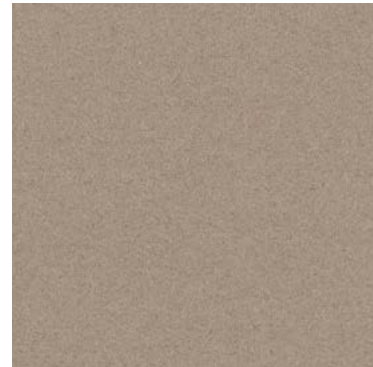


pepper

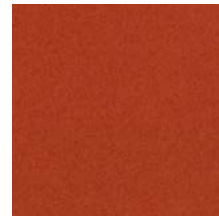
Category 400

Divina 3

collection: Fabric
composition: 100% new wool
width: 150 cm
piling: 3
abrasion resistance: 45.000 cycles
light fastness: class 5-6
rubbing fastness: 4-5 dry, 3-5 wet
manufacturer warranty: 10 years



224



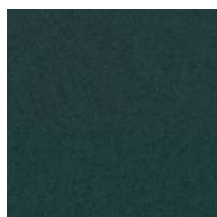
552



584



893



886



944



173



191

Category 400

Divina MD

collection: Fabric
composition: 100% new wool
width: 150 cm
piling: 3
abrasion resistance: 45.000 cycles
light fastness: class 5-6
rubbing fastness: 4-5 dry, 3-5 wet
manufacturer warranty: 10 years



873



973

Category 400

Divina Melange 3

collection: Fabric
composition: 100% new wool
width: 150 cm
piling: 3
abrasion resistance: 45.000 cycles
light fastness: class 6-7
rubbing fastness: 4-5 dry, 3-5 wet
manufacturer warranty: 10 years



227



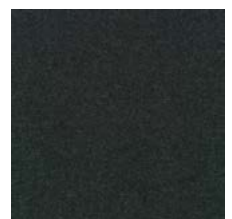
581



147



170

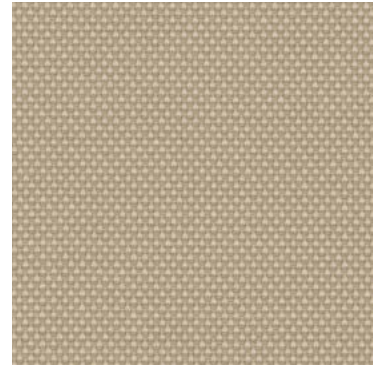


180

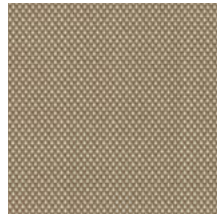
Category 400

Novum

collection: Fabric
composition: 96% virgin wool, 4 % polyamide
width: 150 cm +/- 2 cm
piling: 4-5
abrasion resistance: 90.000 cycles
light fastness: class 5-8
rubbing fastness: 4-5 dry and wet



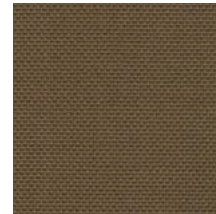
angora



cocos



paradise



cacao



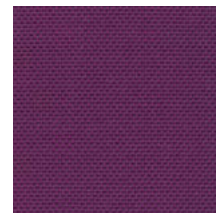
curry



coral



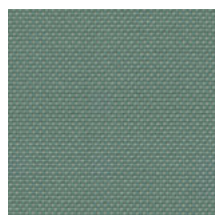
heart



viola



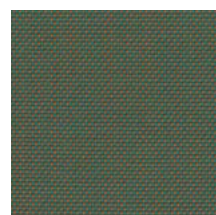
prune



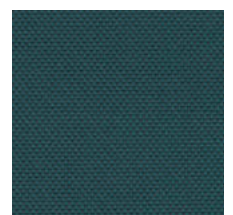
lagoon



delphi



mambo



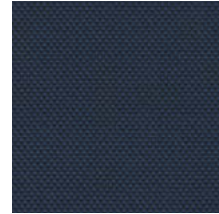
samoa

Category 400

Novum



blues



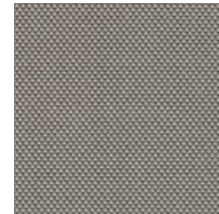
amur



moss



pinie



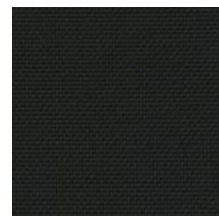
kies



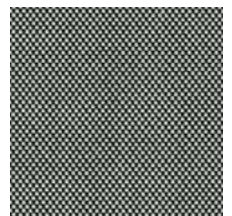
carbon



lanoso



ebony

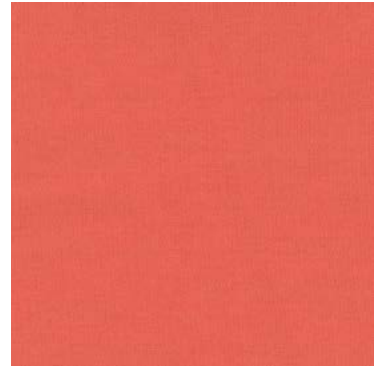


pepper

Category 400

Planum

collection: Fabric
composition: 44% new wool, 42% polyester,
14% nylon
width: 160 cm
piling: 4
abrasion resistance: 100.000 cycles
light fastness: class 5-6
rubbing fastness: 4-5 dry and wet
manufacturer warranty: 5 years



521



351



571



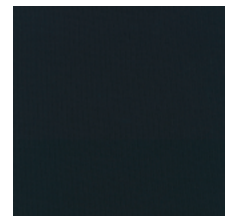
741



141



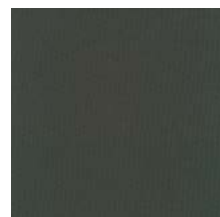
921



791



941



971

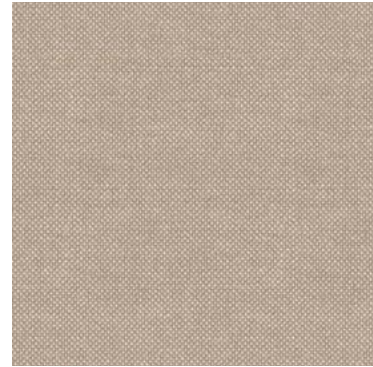


271

Category 500

Hallingdal 65

collection: Fabric
composition: 70% new wool, 30% viscose
width: 130 cm
piling: 3-4
abrasion resistance: 100.000 cycles
light fastness: class 7
rubbing fastness: 4-5 dry, 3-5 wet
manufacturer warranty: 10 years



200



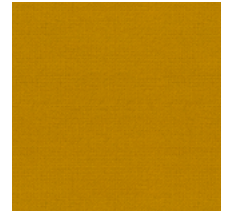
220



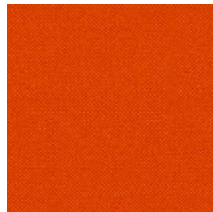
350



407



457



590



674



657



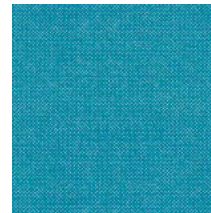
687



573



763



840



850



810



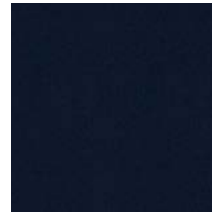
754

Category 500

Hallingdal 65



733



764



890



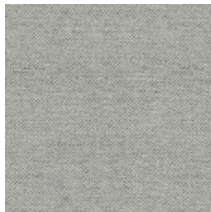
944



980



960



110



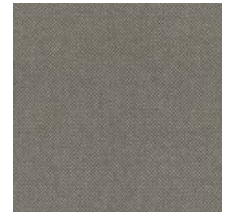
116



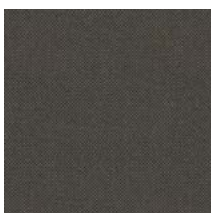
130



166



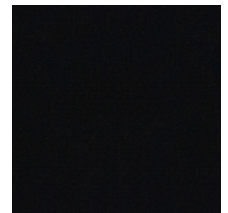
123



153



173



190

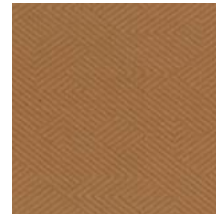
Category 500

Mizmaze

collection: Fabric
composition: 60% polyester, 30% wool,
10% nylon
width: 163 cm
piling: 4
abrasion resistance: 100.000 cycles
light fastness: class 6
rubbing fastness: 4 dry, 4-5 wet
manufacturer warranty: 10 years



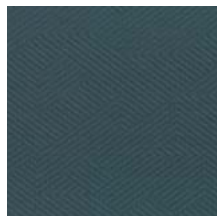
212



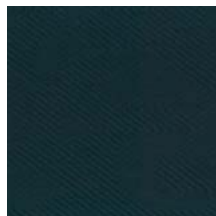
322



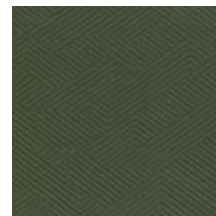
562



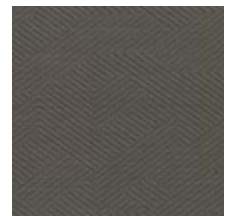
762



882



962



252



392

Category 500

Moss

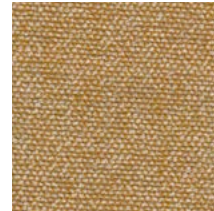
collection: Fabric
composition: 52% cotton, 22% viscose
14% polyacrylic, 6% linen, 3% polyester, 3% nylon
width: 138 cm
piling: 4-5
abrasion resistance: 50.000 cycles
light fastness: class 5-7
rubbing fastness: 4-5 dry and wet
manufacturer warranty: 2 years



011



005



021



010



003



006



015



002

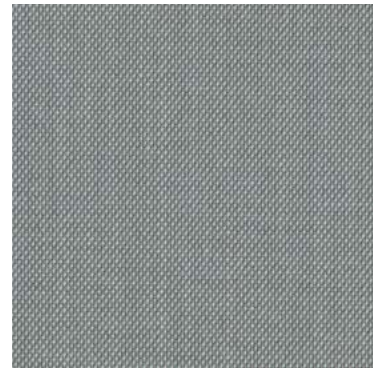


001

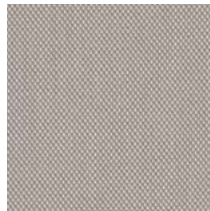
Category 500

Steelcut Trio 3

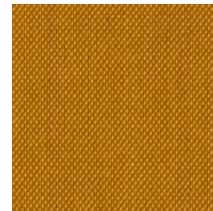
collection: Fabric
composition: 90% new wool worsted, 10% nylon
width: approx 140 cm
piling: 4
abrasion resistance: 100.000 cycles
light fastness: class 6-7
rubbing fastness: 4-5 dry and 3-5 wet
manufacturer warranty: 10 years



113



205



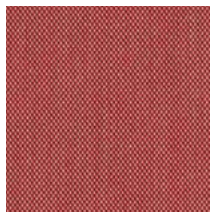
453



576



533



636



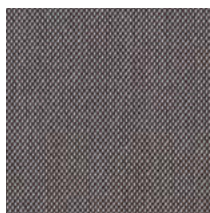
686



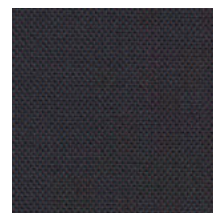
645



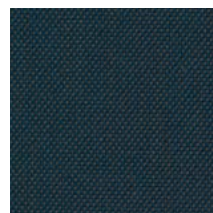
806



336



776



756



883

Category 500

Steelcut Trio 3



983



946



966



996



246



266



153

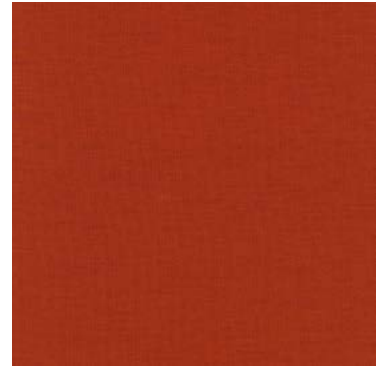


176

Category 600

Uniform Melange

collection: Fabric
composition: 68% new wool, 22% nylon,
10% polyester
width: 165 cm
piling: 4
abrasion resistance: 80.000 cycles
light fastness: class 6
rubbing fastness: 4-5 dry and wet
manufacturer warranty: 5 years



553



363

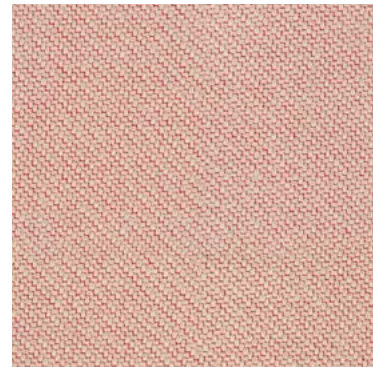


933

Category 700

Coda 2

collection: Fabric
composition: 90% wool, 10% nylon
width: 140 cm
piling: 4
abrasion resistance: 100.000 cycles
light fastness: class 6
rubbing fastness: 4-5 dry and 4 wet
manufacturer warranty: 10 years



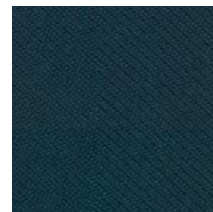
116



610



962



762



182

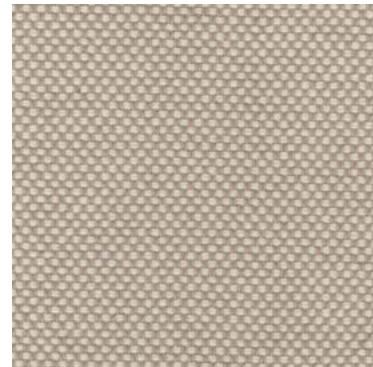


100

Category 700

Sisu

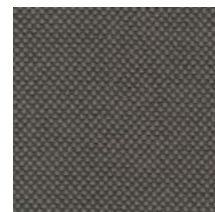
collection: Fabric
composition: 91% new Norwegian wool,
8% new New Zealand wool, 1% nylon
width: approx 142 cm
piling: 3-4
abrasion resistance: 70.000 cycles
light fastness: class 7
rubbing fastness: 4-5 dry and wet
manufacturer warranty: 10 years



105



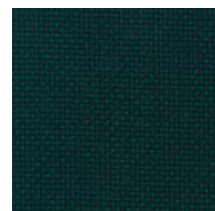
125



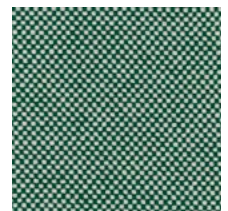
175



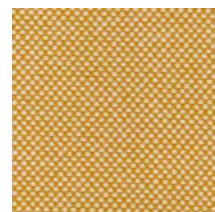
195



885



805



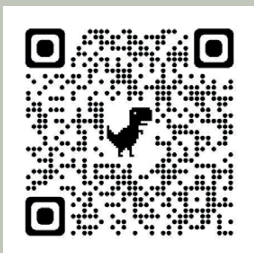
405



165

EPOXIA

6 avenue Charles de Gaulle
78150 Le Chesnay
+33 1 39 66 00 77
contact@epoxia.com
www.epoxia.com



Rejoignez-nous sur nos réseaux sociaux

