

Goji ML03  
MLF03



Curry ML17  
MLF17



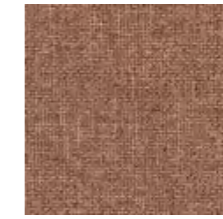
Citrus ML07  
MLF07



Sésame ML08  
MLF08



Liberty RC05  
6508



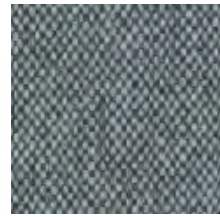
Kilim RC03  
5504



Amarante RC02  
4502



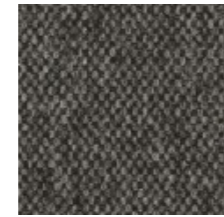
Madras RC07  
3508



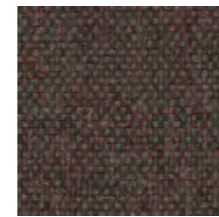
Santorin ML22  
MLF22



Berlin ML36  
MLF36



Faucon ML16  
MLF16



Figue ML39  
MLF39



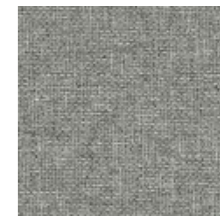
Jute RC04  
3506



Denim RC06  
6502



Alpaga RC01  
1502



Métis RC09  
8501

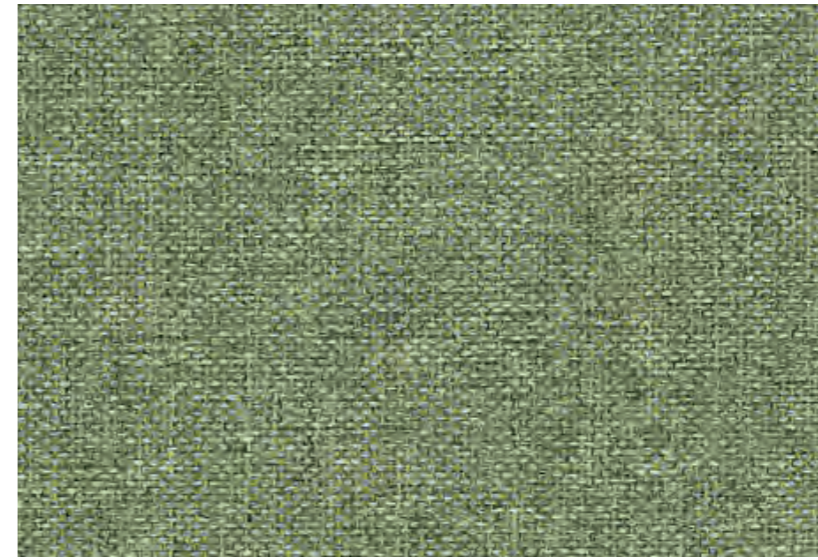
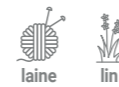


Pin ML09  
MLF09

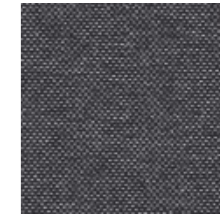


Canopé ML29  
MLF029

## Main Line Flax



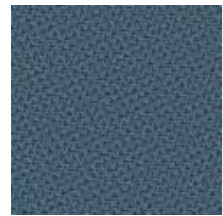
Loden RC08  
7504



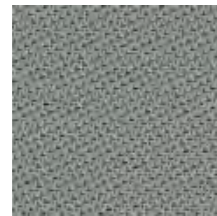
Chambray RC10  
8030

## Roccia

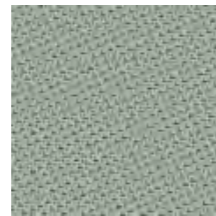




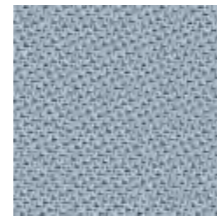
Cobalte TN03  
66186



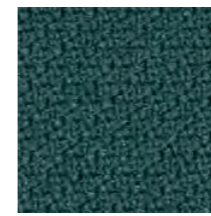
Nuage TN10  
60123



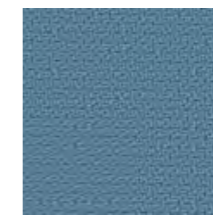
Sauge TN06  
67089



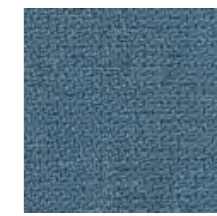
Brume TN04  
66184



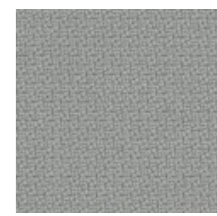
Saphir S15  
66019



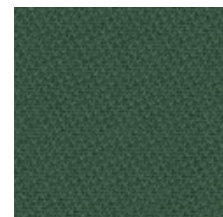
Bleu Batik S10  
67072



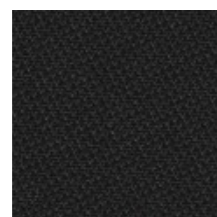
Bleu Givré SM10  
67072



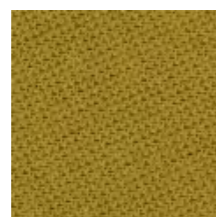
Béton S03  
60091



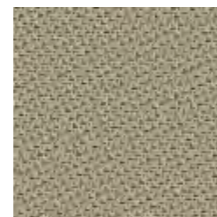
Sapin TN07  
68206



Encre TN05  
60999



Ananas TN09  
62057



Quinoa TN08  
61179



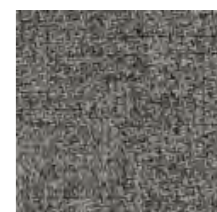
Granit SM04  
61104



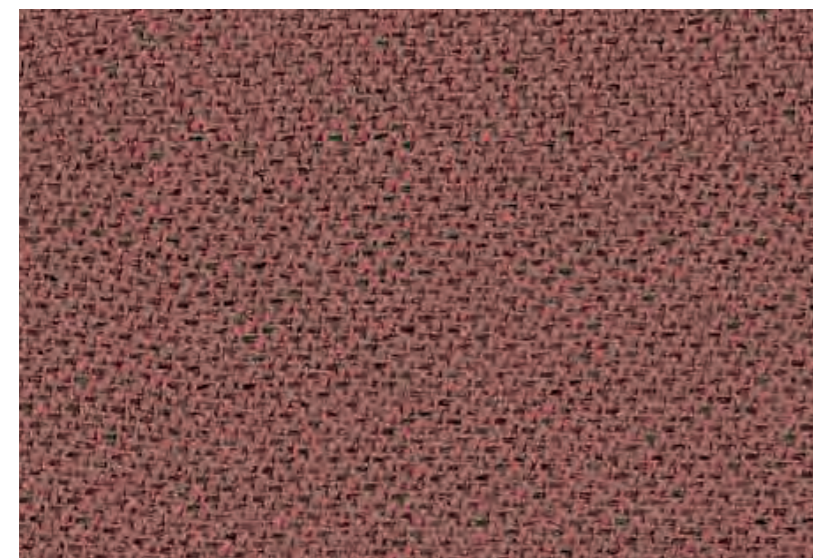
Galet S02  
61149



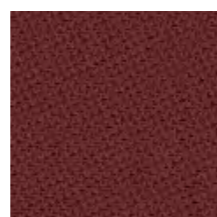
Glaise S01  
60090



Cendre SM02  
61149



Poudre TN02  
64210

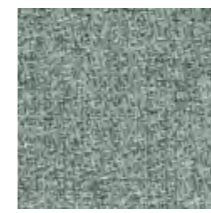


Rubis TN01  
64209

Tonal



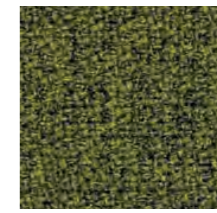
recyclé



Absinthe SM09  
68118



Vert d'Eau S09  
68118



Lichen SM21  
68165



Olive S16  
68165

Step /  
Step Melange



Bergamote SM08  
68162



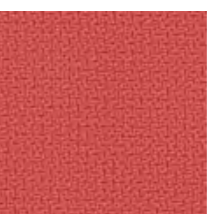
Cumin SM05  
62057



Savora S05  
62057



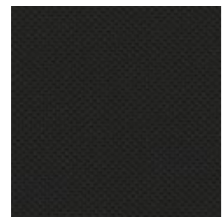
Grenat SM20  
61151



Saumon S12  
64178



Rouge Porto SM1  
64179



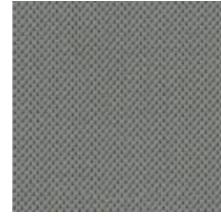
Basalte AC12  
60999



Fusain AC04  
60025



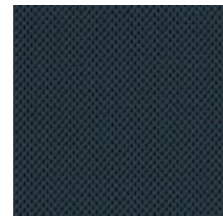
Mineral AC08  
60143



Zinc AC03  
60011



Prusse AC07  
66064



Orage AC05  
67043



Maya AC06  
66063



Nordique AC11  
67030



Ombre AC02  
61163



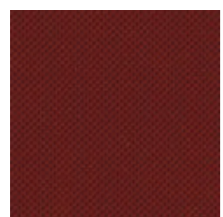
Ficelle AC01  
61078



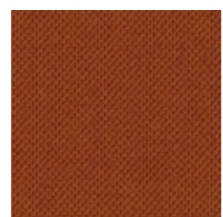
Champagne C15  
61166



Matcha AC09  
68165



Jaspe AC13  
64092



Fauve AC14  
63057



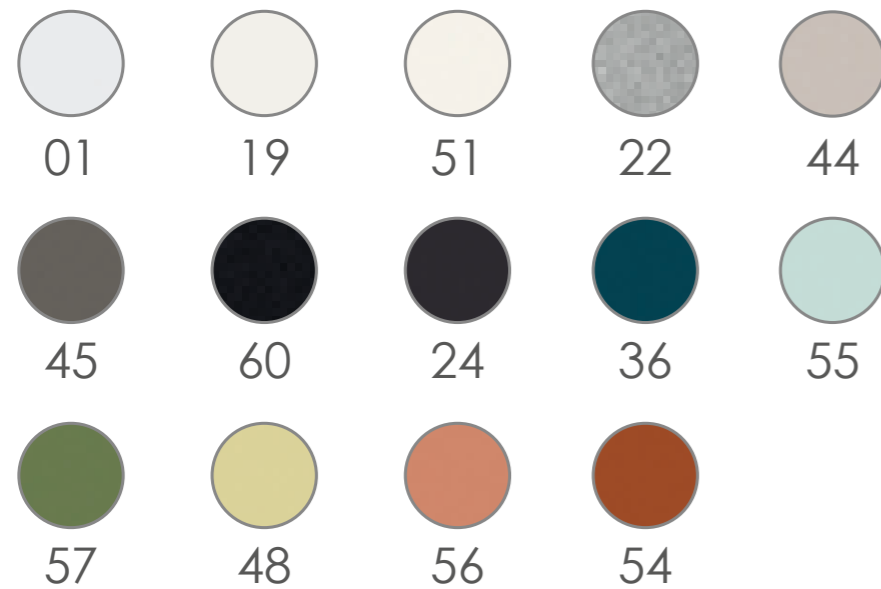
Ocre AC10  
62057

Atlantic



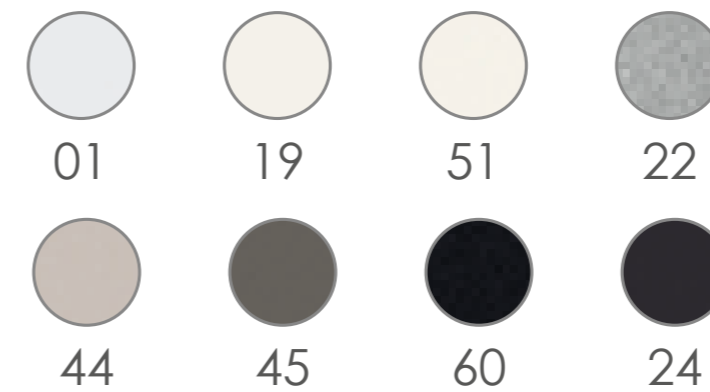
## Cloisons et écrans, épaisseur 32 mm.

Structure et fixations thermolaquées



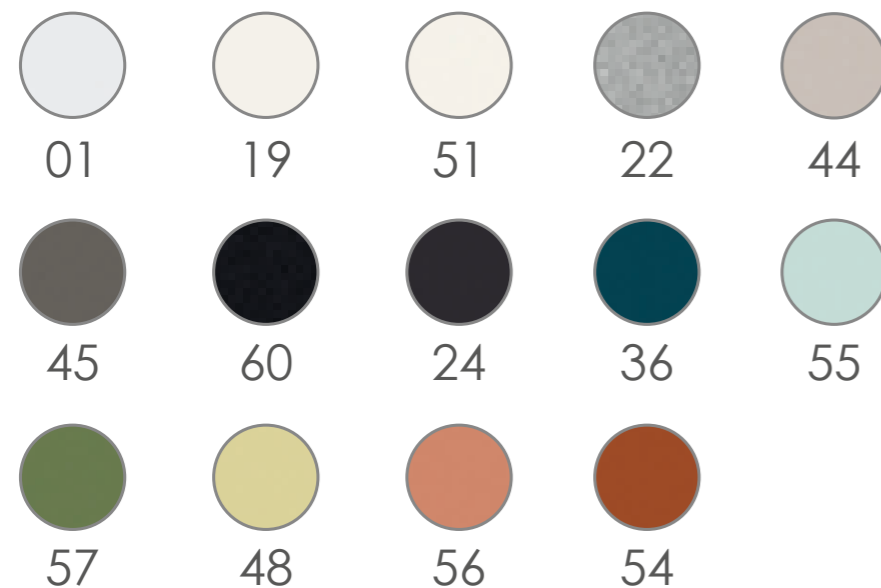
## Cloisons et écrans, épaisseur 40 mm.

Structure et fixations thermolaquées



## Accessoires

Thermolaquage



# epOXIA

6 avenue Charles de Gaulle  
78150 Le Chesnay  
+33 1 39 66 00 77  
contact@epoxia.com  
www.epoxia.com



Rejoignez-nous sur nos réseaux sociaux

