

Frame Mobile

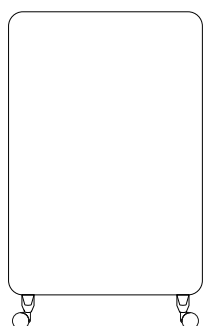


FRAME MOBILE

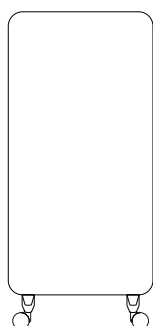
A double-sided glass mobile writing board with a bentwood frame. The softly rounded frame defines the work surface and doubles as a handle when moving the board between locations. Frame mobile is available in two sizes, each of them in two versions, a model with coordinating light grey feet, castors and frame and another with solid oak feet, black castors and matching oak frame. The glass is available in our carefully selected 24 standard colours. For a monochrome appearance we recommend colour Soft - 150 combined with grey feet and matching frame. Designed by HALLEROED and MATTI KLENELL.

Frame and feet available in grey or oak
 24 standard glass colours
 Magnetic writing surface
 Tempered, low iron glass

Article number	Name	Size w x h mm	Weight kg
70920-colour code	Frame Mobile, oak frame and feet. Black casters	750 x 1960	46
70910-colour code	Frame Mobile, oak frame and feet. Black casters	1200 x 1960	71
70925-colour code	Frame Mobile, grey frame, feet & casters (Soft 150)	750 x 1960	46
70915-colour code	Frame Mobile, grey frame, feet & casters (Soft 150)	1200 x 1960	71



1200 x 1960



750 x 1960

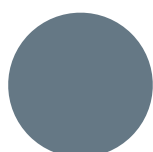


70915/70925

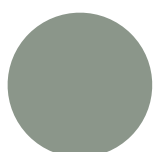


70910/70920

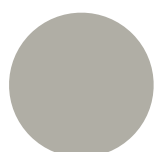
Nuancier verre



Bold
330



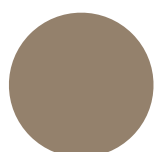
Frank
540



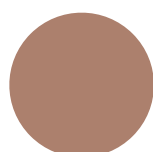
Shy
120



Lonely
170



Cozy
450



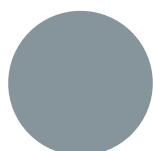
Innocent
670



Happy
700



Wild
660



Smooth
340



Fair
550



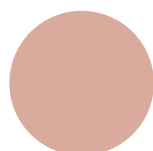
Soft
150



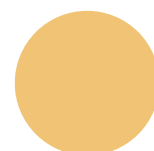
Warm
160



Mild
250



Naive
640



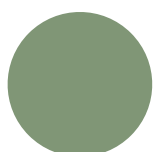
Lively
460



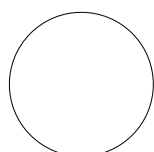
Excited
420



Calm
320



Gentle
560



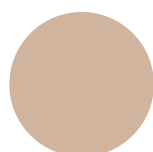
Pure
130



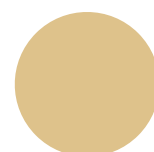
Lazy
140



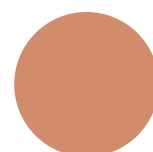
Pale
230



Neat
650



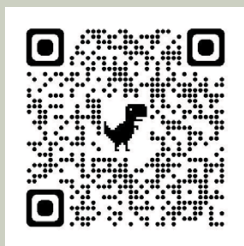
Mellow
730



Lush
470

EPOXIA

6 avenue Charles de Gaulle
78150 Le Chesnay
+33 1 39 66 00 77
contact@epoxia.com
www.epoxia.com



Rejoignez-nous sur nos réseaux sociaux

