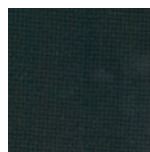


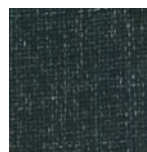
## Groupe de tissus 1

### Citadel

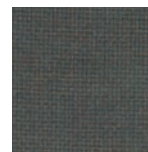
100% Polypropylène FR  
320 g/ml



CI01  
(FL019)  
noir



CI11  
(FL768)  
gris anthracite



CI15  
(FL824)  
taupe

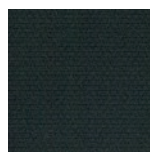


CI22  
(FL757)  
bleu saphir

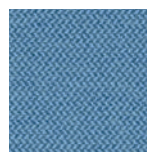
### Era\*

100% Polyester  
448 g/ml

\* Un plus large choix de couleurs est à votre disposition dans le monde de Pcon.



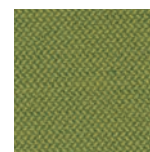
ER01  
(CSE14)  
noir



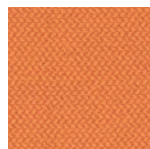
ER02  
(CSE08)  
bleu brillant



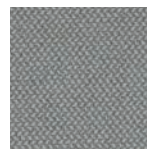
ER03  
(CSE19)  
vieux rose



ER04  
(CSE16)  
vert pomme



ER23  
(CSE05)  
orange



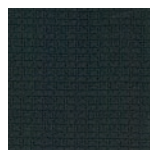
ER31  
(CSE11)  
gris platine



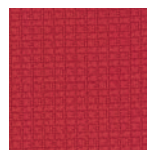
ER33  
(CSE06)  
framboise

### Manhattan

100% Polyester recyclé  
400 g/ml



MH01  
(YI009)  
noir



MH03  
(YI362)  
rouge vif



MH13  
(YI113)  
orange



MH14  
(YI188)  
vert pomme

### Mailles

100 % Polyester  
580 g/ml



KW40  
uni, noir



KW44  
uni, blanc



KW48  
anthracite



KW23  
rouge vif

## Groupe de tissus 2 (suite sur la page suivante)

### Lucia\*

100% Polyester  
400 g/ml

\* Un plus large choix de couleurs est à votre disposition dans le monde de Pcon.



5800  
(YP009)  
noir



5801  
(YP019)  
gris signal



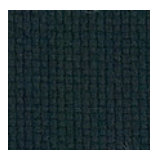
5803  
(YP026)  
bleu saphir



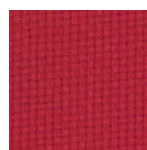
5805  
(YP106)  
rouge rubis

### King

100% Polyester (Trevira CS)  
365 g/ml



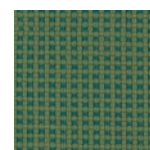
KI01  
(8033)  
noir



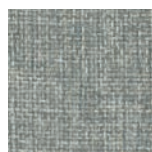
KI03  
(4027)  
rouge signal



KI11  
(8510)  
gris chiné



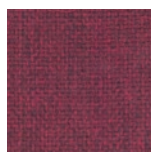
KI14  
(7519)  
vert fougère



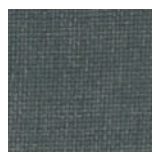
CI31  
(FL832)  
gris platine



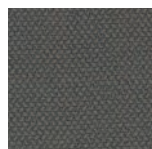
CI42  
(FL830)  
bleu azur



CI43  
(FL826)  
bordeaux



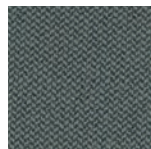
CI61  
(FL833)  
gris foncé



ER05  
(CSE21)  
brun sépia



ER06  
(CSE03)  
jaune citron



ER11  
(CSE13)  
gris quartz



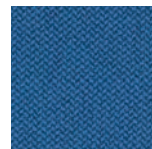
ER12  
(CSE20)  
turquoise pastel



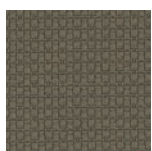
ER13  
(CSE09)  
lilas



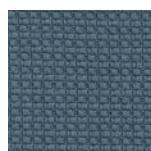
ER21  
(CSE02)  
taupe



ER22  
(CSE12)  
bleu signal



MH25  
(HY1392)  
taupe



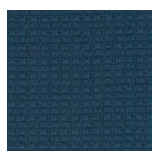
MH31  
(YI389)  
bleu gris



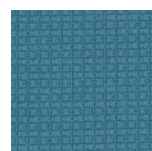
MH32  
(YI386)  
bleu outremer



MH41  
(YI363)  
gris fer



MH62  
(YI026)  
bleu cobalt



MH72  
(HY1391)  
bleu pastel



KW13  
orange



KW14  
vert pomme



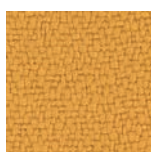
KW25  
taupe



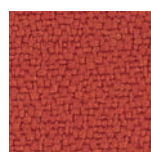
KW62  
bleu cobalt



KW72  
bleu pastel



5811  
(YP110)  
jaune mais



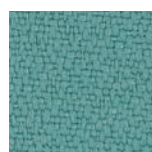
5816  
(YP076)  
orange sanguin



5824  
(YP011)  
bleu océan



5832  
(YP082)  
bleu



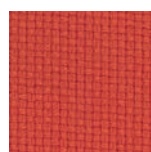
5814  
(YP112)  
turquoise menthe



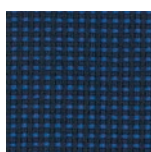
5823  
(YP051)  
bordeaux



KI15  
(2514)  
ocre



KI43  
(3094)  
orange sanguin



KI62  
(6617)  
bleu nocturne

Entre parenthèses: Codes du fabricant

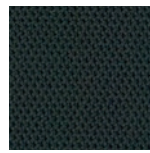
## Groupe de tissus 2

---

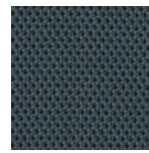
### Royal

---

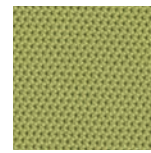
100% Polyester  
450 g/ml



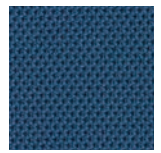
RO01  
(PS004)  
noir



RO11  
(PS030)  
graphite



RO14  
(PS026)  
vert pâle

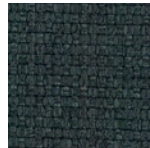


RO22  
(PS033)  
bleu violet

### Medley

---

100% Polyester  
510 g/ml



MD01  
(60999)  
gris foncé



MD03  
(64019)  
rouge signal



MD06  
(62002)  
jaune genêt

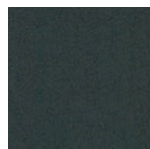


MD14  
(68114)  
vert pâle

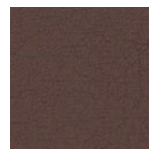
### Amalfi

---

13,85% PES  
86,15% PVC  
910 g/ml  
(simili-cuir/vinyl)



AM01  
(008716)  
gris foncé



AM05  
(008719)  
noisette



AM06  
(008731)  
jaune soleil



AM07  
(008717)  
crème

## Groupe de tissus 3

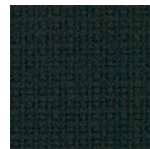
---

### Fame\*

---

95 % pure laine  
5 % polyamide  
630 g/ml

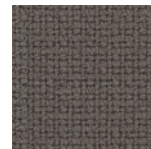
\* Un plus large choix de couleurs  
est à votre disposition dans le  
monde de Pcon.



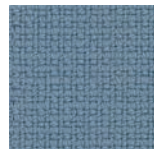
FA01  
(60999)  
noir



FA13  
(64089)  
rouge



FA15  
(61135)  
brun

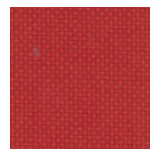


FA32  
(66130)  
bleu pigeon

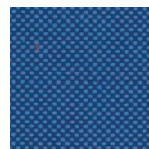
### Field

---

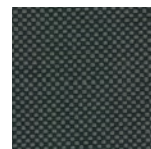
100% Polyester (Trevira CS)  
430 g/ml



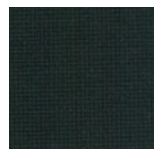
FI03  
(662)  
rouge carmin



FI32  
(762)  
bleu outremer



FI41  
(182)  
gris noir

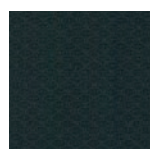


FI51  
(192)  
noir

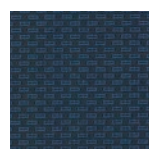
### Climatex Ultra

---

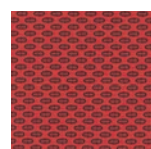
72% Cradura™  
16% Laine vierge certifié  
12% Redesigned Lenzing FR™  
437 g/ml



UL01\*  
(491 008-999)  
noir



UL02\*  
(491 008-575)  
bleu cobalt

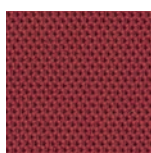


UL03  
(491 008-353)  
rouge signal

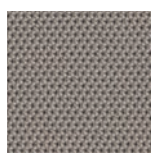


UL04  
(491 008-696)  
vert

\* Pour les collections Goal et Hero, les tissus sont également disponibles sur demande en version antistatique.



RO53  
(PS011)  
rouge rubis



RO61  
(PS002)  
gris beige



MD21  
(66008)  
gris



MD22  
(66009)  
bleu violet



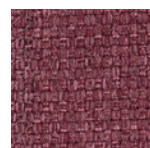
MD23  
(65012)  
lilas



MD31  
(60004)  
graphite



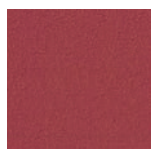
MD32  
(66010)  
bleu acier



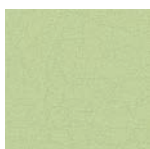
MD43  
(64125)  
rouge signal



AM12  
(014128)  
bleu pastel



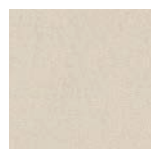
AM13  
(008732)  
rouge signal



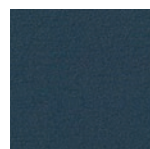
AM14  
(014129)  
vert clair



AM16  
(014131)  
jaune zinc



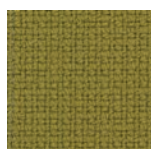
AM17  
(008714)  
ivoire



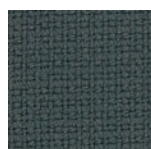
AM22  
(008720)  
bleu acier



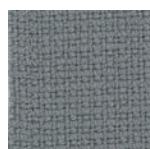
AM33  
(008726)  
jaune pastel



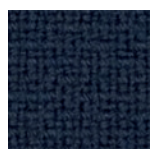
FA44  
(68004)  
jaune miel



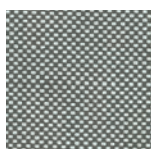
FA61  
(60003)  
anthracite



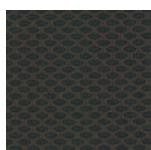
FA91  
(60078)  
gris



FAA2  
(66061)  
bleu foncé



FI81  
(132)  
graphite chiné



UL05  
(491 008-792)  
brun noir

Entre parenthèses: Codes du fabricant

## Groupe haute Performance 4

---

### Synergy\*

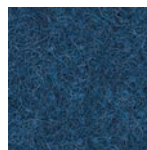
---

95% Pure laine  
5% Polyamide  
560 g/ml

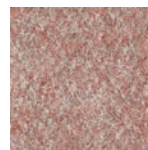
\* Un plus large choix de couleurs est à votre disposition dans le monde de Pcon.



YS01  
(LDS16)  
gris quartz



YS02  
(LDS62)  
bleu violet



YS03  
(LDS74)  
vieux rose



YS04  
(LDS46)  
vert clair

### PUxx

---

100% Polyurethane  
740 g/ml tissu enduit



PU01  
(21.5816)  
gris foncé



PU02  
(21.7609)  
gris bleu



PU03  
(21.9533)  
vieux rose

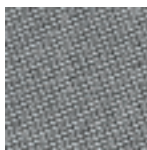


PU04  
(21.6441)  
vert jonc

### Rime

---

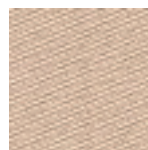
90% Pure laine peignée  
10% Nylon  
580 g/ml



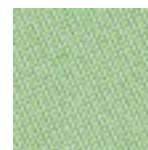
RI01  
(151)  
noir chiné



RI02  
(721)  
bleu azur



RI03  
(521)  
orange



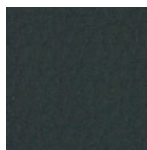
RI04  
(921)  
vert pomme

## Groupe de cuirs 6

---

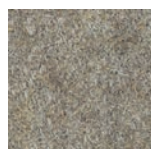
### Cuir vachette

---

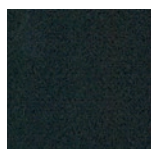


0781  
noir

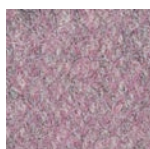
---



YS05  
(LDS32)  
taupe



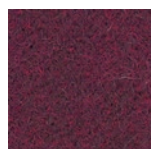
YS11  
(LDS27)  
noir



YS13  
(LDS07)  
violet pastel



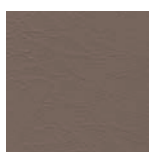
YS15  
(LDS33)  
brun clair



YS23  
(LDS87)  
rouge pourpre



YS25  
(LDS48)  
brun olive



PU05  
(21.7707)  
brun pâle



PU06  
(21.7148)  
ivoire



PU07  
(21.7136)  
blanc cassé



PU11  
(21.7261)  
gris ciment



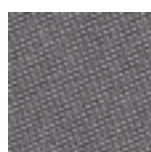
PU12  
(21.7606)  
bleu vert



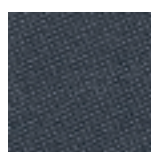
PU15  
(21.9527)  
brun cuivré



PU22  
(21.7608)  
bleu océan



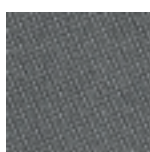
RI05  
(641)  
brun clair



RI11  
(791)  
gris foncé



RI13  
(621)  
fraise



RI15  
(271)  
taupe



RI21  
(131)  
gris



RI31  
(231)  
gris olive

Entre parenthèses: Codes du fabricant

## Groupe de cuirs 7

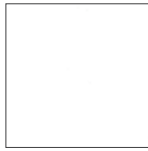
---

### Cuir Ascot\*

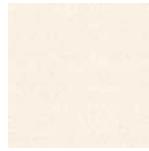
---



SA01  
(2900)  
noir



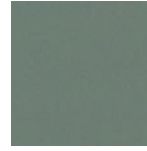
SA07  
(2100)  
blanc



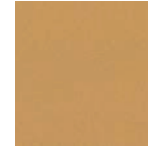
SA17  
(2110)  
crème



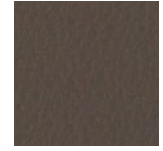
SA22  
(2560)  
bleu gris



SAC1  
(2655)  
gris platine



SAE5  
(2260)  
brun terre  
de sienne



SAG5  
(2865)  
brun sépia

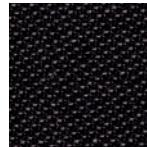
## ESD

---

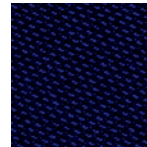
### Duotec ESD

---

89% Polyacryl  
2% Lycra  
535 g/ml



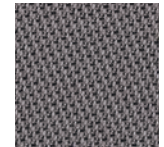
9801  
noir



9802  
bleu



9803  
rouge



9811  
gris

## Tissu industriel

---

### Zaha

---

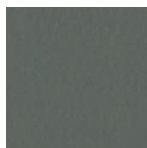
100% Polyester  
ca. 405 g/lfm



ZH01  
noir



ZH07  
blanc



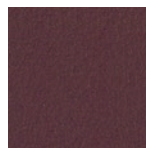
SA51  
(2760)  
gris quartz



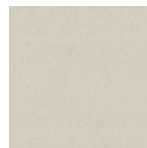
SA82  
(2522)  
bleu pastel



SA85  
(2180)  
beige gris



SA93  
(2430)  
bordeaux



SAA1  
(2120)  
gris silex



SAB1  
(2175)  
gris beige

\* Codes dans fichiers OFML pour cuir Ascot: AS..

**Note : Encore plus de choix de tissus avec les nouvelles collections de nos partenaire Gabriel, Fidivi, Camira et Kvadrat, disponibles dans le monde de Pcon.**

## Mailles tricots

Hero



noir  
8010



anthracite  
8009

Goal-Air

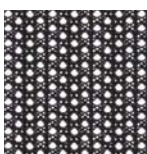


noir  
8001

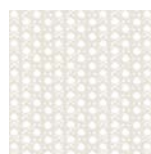


anthracite  
8009

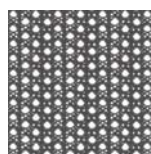
JOYCE<sup>IS3</sup>



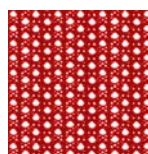
8240  
uni, noir  
**KW40**



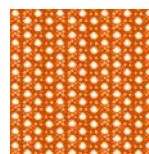
8244  
uni, blanc  
**KW44**



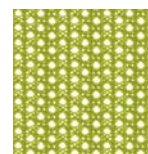
8248  
anthracite  
**KW48**



8223  
rouge  
**KW23**



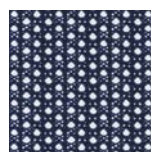
8213  
orange  
**KW13**



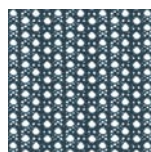
8214  
vert pomme  
**KW14**



8225  
taupe  
**KW25**



8262  
bleu cobalt  
**KW62**

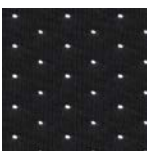


8272  
bleu pastel  
**KW72**

En italique: Housse maille d'assise assortie

## Softback Mailles tricots

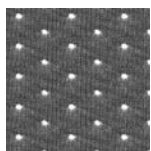
JOYCE<sup>IS3</sup>



8340  
uni, noir  
**KW40**



8344  
uni, blanc  
**KW44**



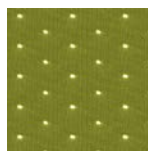
8348  
anthracite  
**KW48**



8323  
rouge  
**KW23**



8313  
orange  
**KW13**



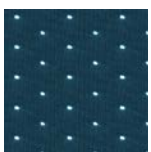
8314  
vert pomme  
**KW14**



8325  
taupe  
**KW25**



8362  
bleu cobalt  
**KW62**

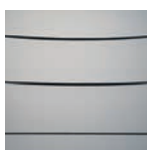


8372  
bleu pastel  
**KW72**

En italique: Housse maille d'assise assortie

## Membrane

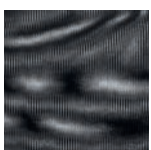
AirPad



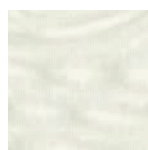
noir  
8840



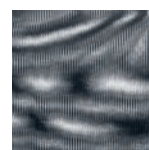
blanc  
8844



uni, noir  
8140  
**MH01**



uni, blanc  
8144



anthracite  
8148  
**MH41**

## Tissage

PURE<sup>IS3</sup>, MOVY<sup>IS3</sup>, VINTAGE<sup>IS5</sup>, AIM<sup>IS1</sup>, EVERY<sup>IS1</sup>, BUDDY<sup>IS3</sup>

En italique: couleurs correspondantes de la collection Manhattan

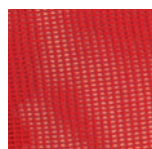


## MAILLES/RÉSILLES/MEMBRANES

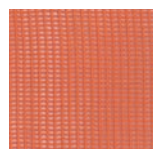
### MOUSSE INTÉGRALE / COULEURS DES PIETEMENTS ET FINITIONS / COULEURS DES PLASTIQUES

#### Tissage

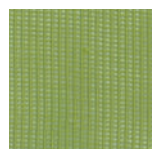
PURE<sup>IS3</sup>, MOVY<sup>IS3</sup>, AIM<sup>IS1</sup>, EVERY<sup>IS1</sup>, BUDDY<sup>IS3</sup>



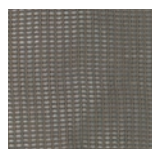
8123  
rouge  
**MH03**



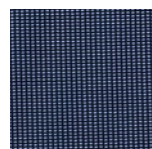
8113  
orange  
**MH13**



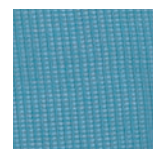
8114  
vert pomme  
**MH14**



8125  
taupe  
**MH25**



8162  
bleu cobalt  
**MH62**

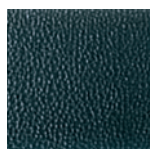


8172  
bleu pastel  
**MH72**

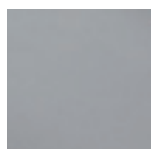
**En italique: couleurs correspondantes de la collection Manhattan**

#### Mousse intégrale

KINETIC<sup>IS5</sup>

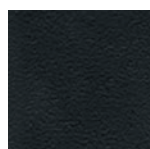


noir  
2000



gris  
2002

#### Couleurs finition et structure



noir  
..217



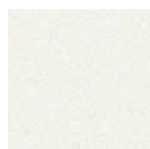
gris argent  
..234



chrome  
..324



poli  
..304

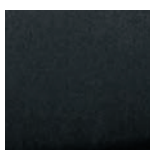


blanc  
..283

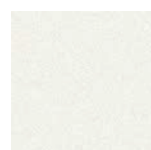


argenté, poli  
brossé  
..349

#### Couleurs des plastiques



noir  
3217



blanc  
3283



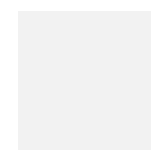
fresh yellow  
3400



soft red  
3401



ice blue  
3402



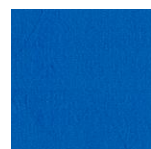
gris clair  
3261



smart white  
3403



anthracite  
3231



bleu  
3206



rouge  
3207



vert  
3245



jaune  
3208



bleu pétrole  
3A01



gris-bleu  
3A02



beige  
3A03



moutarde  
3A04

Pour savoir quels modèles sont disponibles en quelles versions et couleurs, reportez-vous aux pages du tarif correspondantes. Vous y trouverez également les codes.

# epoxia

6 avenue Charles de Gaulle  
78150 Le Chesnay  
+33 1 39 66 00 77  
contact@epoxia.com  
www.epoxia.com



Rejoignez-nous sur nos réseaux sociaux

