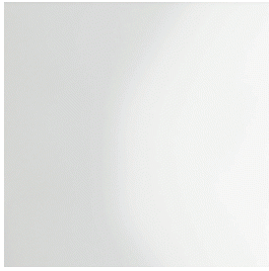


Piètement

Aluminium



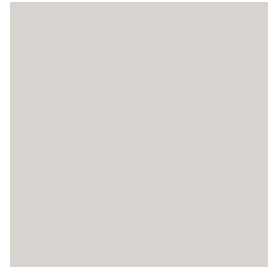
47 - Poli



55 - Chromé



111 - Noir

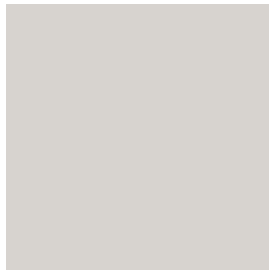


095 - Gris

Nylon



111 - Noir



095 - Gris

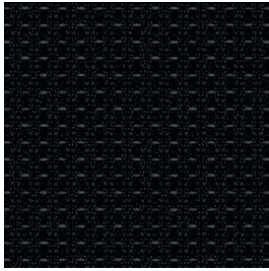
Dossier en résille

Tale - Catégorie X

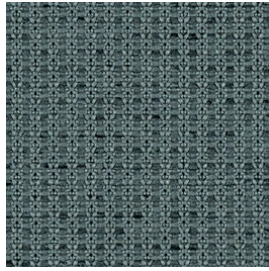
Composition : 99% polyester recyclé/1% polyester.

Norme au feu: BS EN 1021-1 Cigarette, BS EN 1021 1&2 Cigarette and Match, CA TB 117-2013.

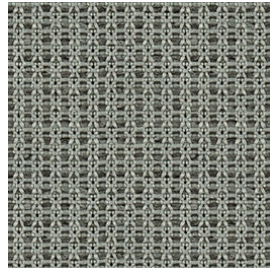
Abrasion: Martindale 100.000 cycles.



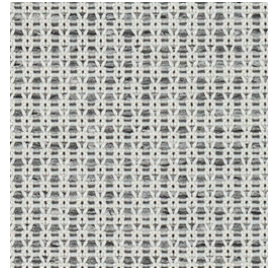
04R - Noir



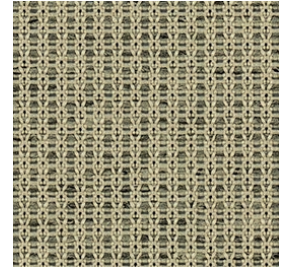
03R - Gris Moyen



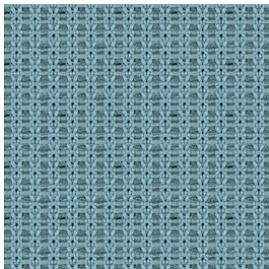
02R - Gris clair mélangé



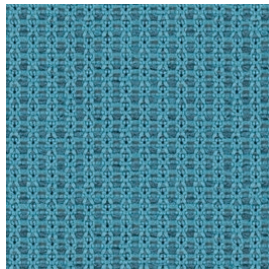
01R - Gris glacier mélangé



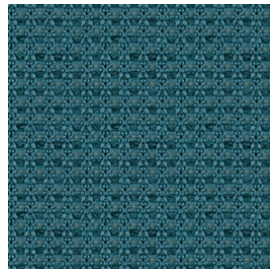
05R - Gris vert mélangé



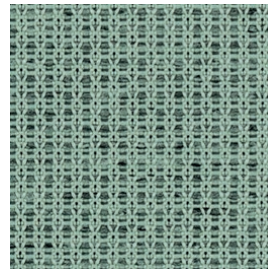
10R - Avio clair melange



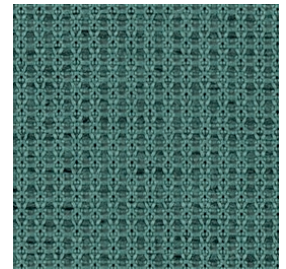
09R - Azur mélangé



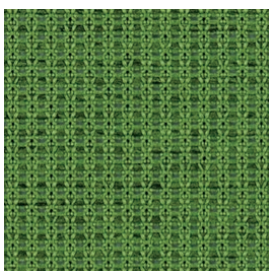
11R - Pétrole



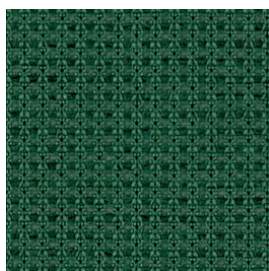
12R - Vert sauge mélangé



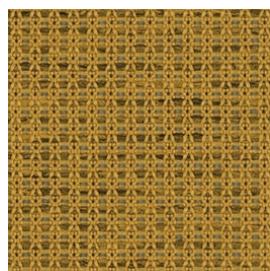
13R - Vert mélangé



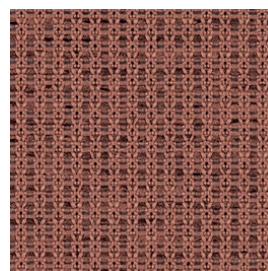
14R - Vert clair mélangé



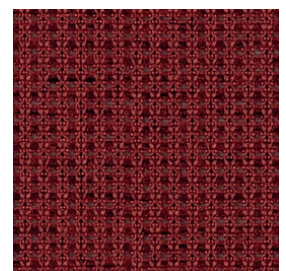
15R - Vert foncé mélangé



06R - Jaune mélangé



08R - Rose poudré mélangé

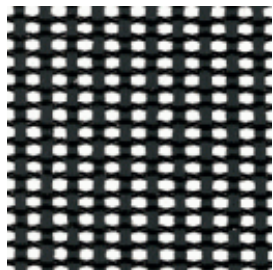


07R - Rouge foncé mélangé

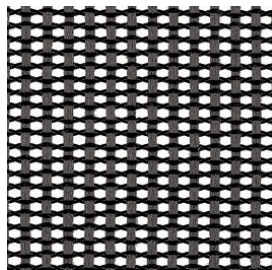
Dossier en résille

Résille élastique - Catégorie X

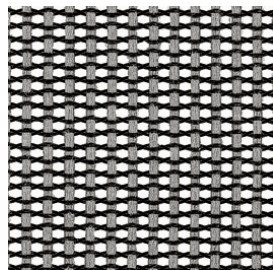
Composition : 70% polyester élastomère, 30% polyester teint en fil
Abrasion : 50.000 cycles Wyzenbeek Cotton Duck



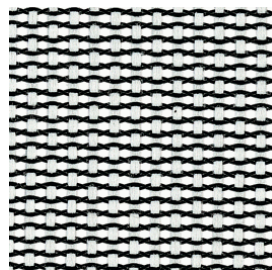
01 - Noir



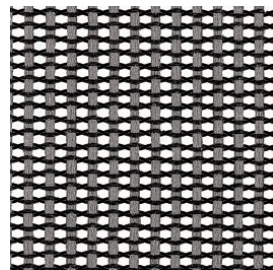
20 - Graphite



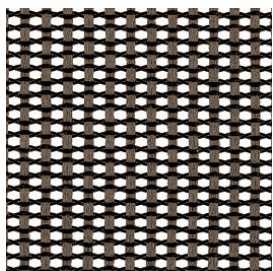
21 - Gris clair



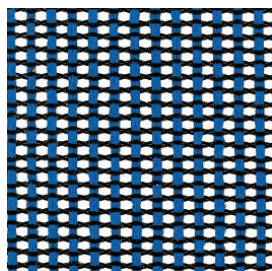
24 - Blanc-Noir



55 - Gris tourterelle



50 - Greige



11 - Bleu

Rhythm - Catégorie X

Composition : 100% polyester
Abrasion : Martindale 70.000 cycles



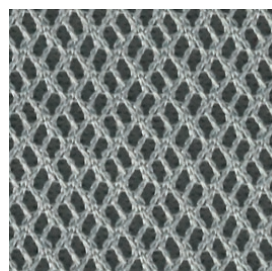
33R - Noir



34R - Gris foncé



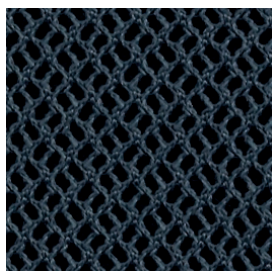
54R - Gris médium



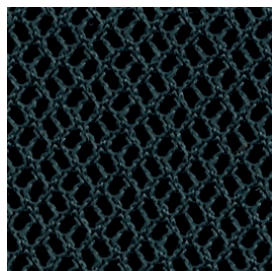
35R - Gris



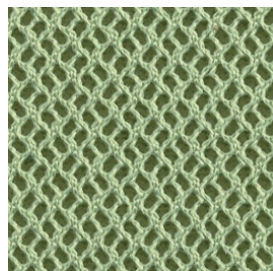
55R - Gris bleu



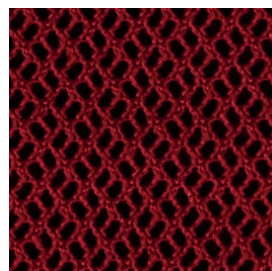
67R - Bleu



41R - Vert foncé



37R - Vert



39R - Rouge

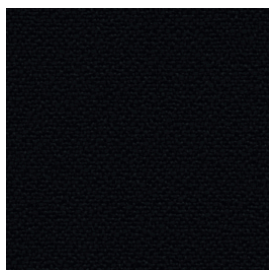
Tissus assise et/ou dossier

Bravo - Catégorie A

Composition: 100% polyester recyclé (après consommation)

Norme au feu: UNI 9175 classe 1 IM, EN 1021-1&2, BS 5852 CRIB 5, BS 7176 Class Medium Hazard

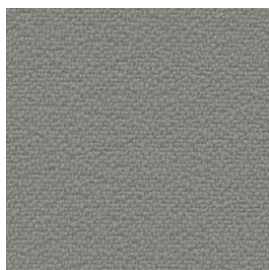
Abrasion: Martindale 100.000



21A - Noir



21C - Gris foncé



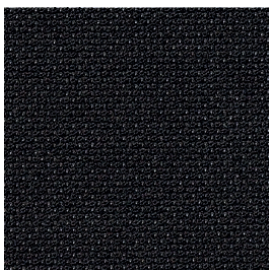
21B - Gris clair

Atlantic - Catégorie B

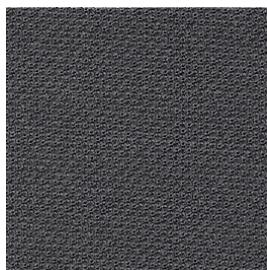
Composition : 100% polyester

Réaction au feu : UNI 9175 class 1, Calif. Bull. 117 sec. E classe 1, CA BT 117-2013, BS EN 1021 1&2, NF P 92-503 M3, AM 18 - NF D 60-013, Önorm B 3825-B1-3800-Q1 UK

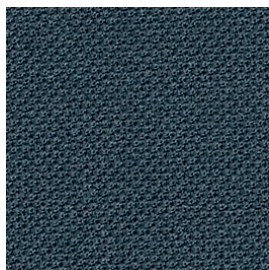
Abrasion : Martindale 110.000



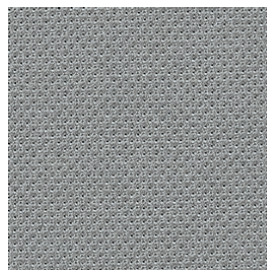
433 - Noir



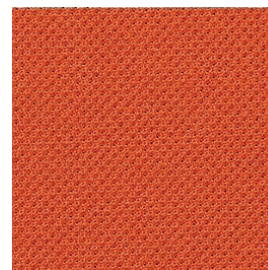
434 - Gris foncé



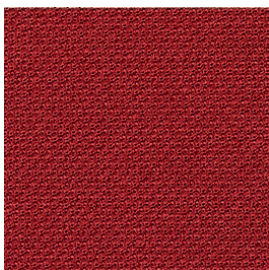
455 - Azur gris



435 - Gris



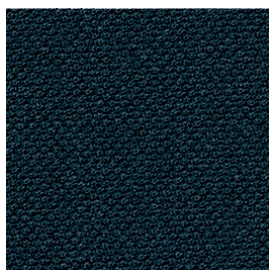
438 - Orange



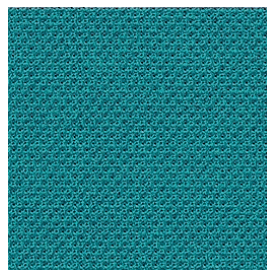
439 - Rouge



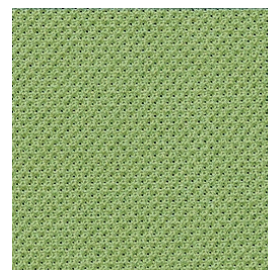
457 - Bleu foncé



441 - Vert foncé



436 - Bleu pétrole



437 - Vert

Tissus assise et/ou dossier

Mini - Catégorie B

Composition : 100% Trevira CS

Réaction au feu : UNI 9174 - 8456 Class C1, UNI 9175 Class 1 IM, DIN 4102 Class B1, NF 92501-7 Class M1, NF D 60013 Class AM18, EN 1021 1&2.

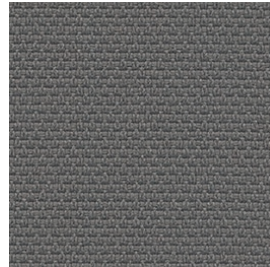
Abrasion : Martindale 110.000 cycles



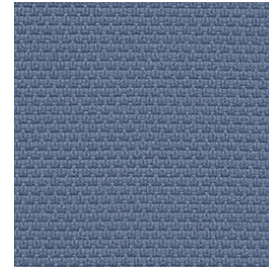
28A - Noir



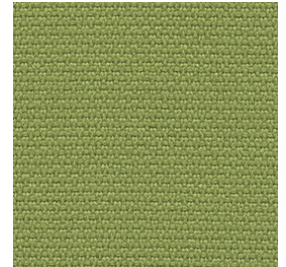
28F - Gris foncé



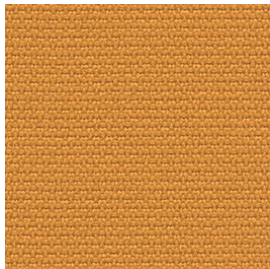
28E - Gris



28C - Blue clair



28D - Vert



28H - Jaune cadmium



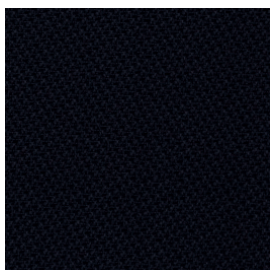
28B - Rouge

Tonal - Catégorie B

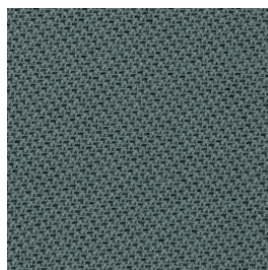
Composition: 99% polyester recyclé / 1% polyester

Réaction au feu: CA TB 117-2013, ASTM E 84 Class I, BS EN 1021 1&2 Cigarette and Match, BS EN 1021-1. Cigarette, BS 476 Part 7 class I, DIN EN 13501-1 B-s1,d0(glued)

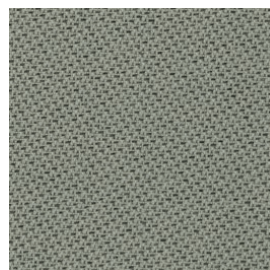
Abrasion: Martindale 100.000 cycles.



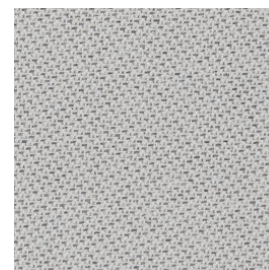
04T - Noir



03T - Gris Moyen



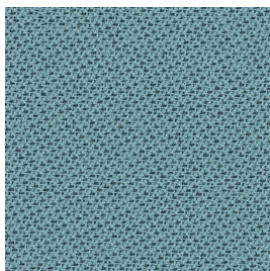
02T - Gris clair mélangé



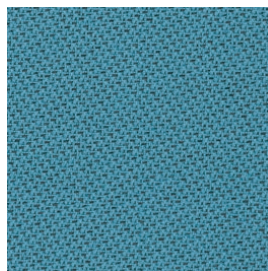
01T - Gris glacier mélangé



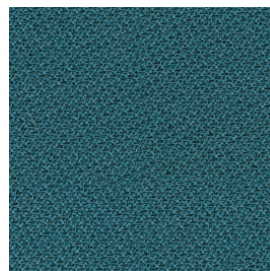
05T - Gris vert mélangé



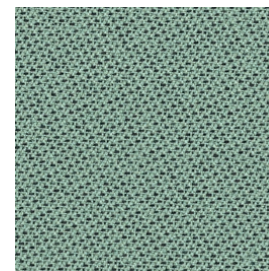
10T - Avio clair mélangé



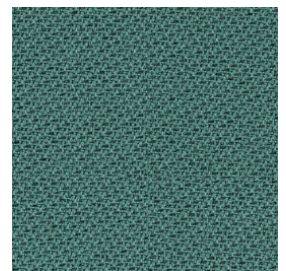
09T - Azur mélangé



11T - Pétrole



12T - Vert sauge mélangé



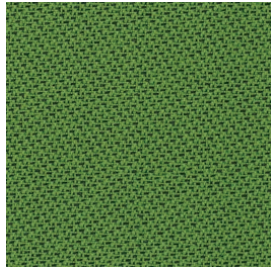
13T - Vert mélangé

Tonal - Catégorie B

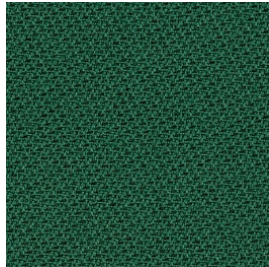
Composition: 99% polyester recyclé / 1% polyester

Réaction au feu: CA TB 117-2013, ASTM E 84 Class I, BS EN 1021 1&2 Cigarette and Match, BS EN 1021-1. Cigarette, BS 476 Part 7 class I, DIN EN 13501-1 B-s1,d0(glued)

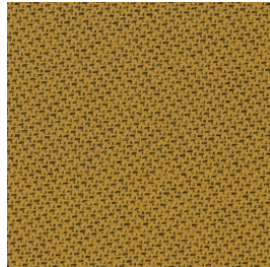
Abrasion: Martindale 100.000 cycles.



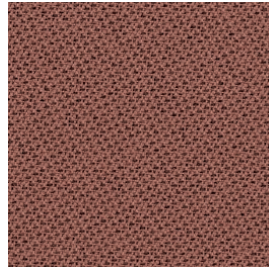
14T - Vert clair
mélangé



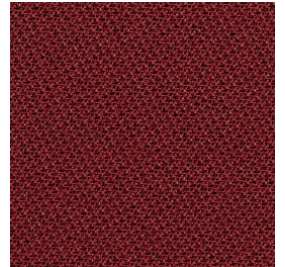
15T - Vert foncé
mélangé



06T - Jaune
mélangé



08T - Rose poudré
mélangé



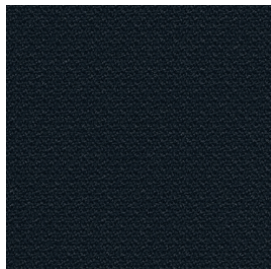
07T - Rouge foncé
mélangé

Cura - Catégorie C

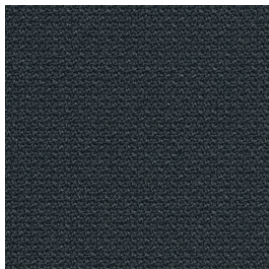
Composition : 98% polyester recyclé / 2% polyester

Réaction au feu : EN 1021 1&2, BS 5852 Part 1 0-1 Cigarette & match, CA TB 117-2013

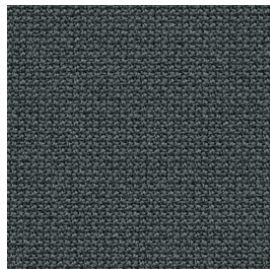
Abrasion : Martindale 100.000 cycles



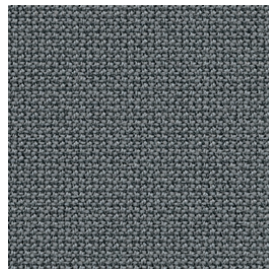
572 - Noir



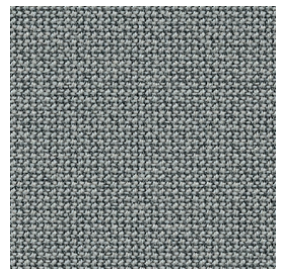
573 - Gris foncé



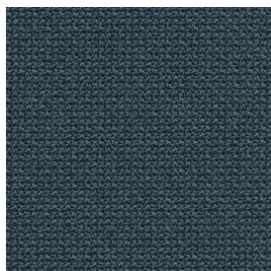
570 - Gris Moyen



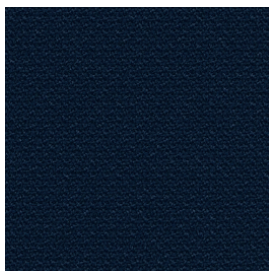
578 - Gris



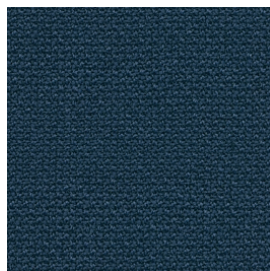
568 - Gris clair mélangé



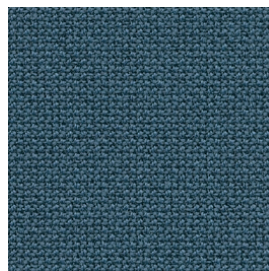
571 - Gris Bleu



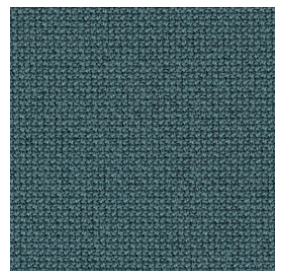
574 - Bleu



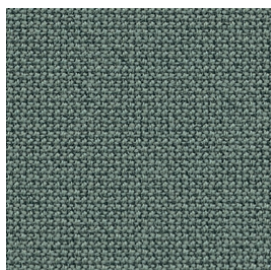
577 - Avio



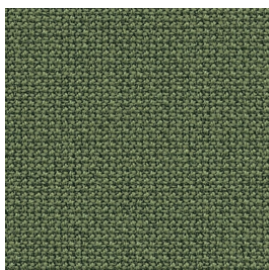
566 - Azur melange



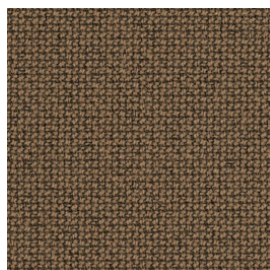
575 - Azur



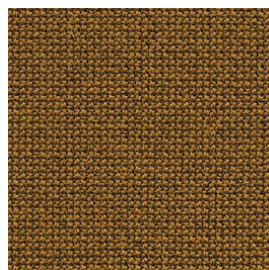
567 - Gris vert
mélangé



576 - Vert



569 - Marron clair



565 - Jaune orange
mélangé

Mini Melange - Catégorie C

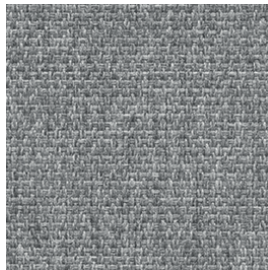
Composition: 100% Trevira CS

Réaction au feu: UNI 9174 - 8456 Class C1, UNI 9175 Class 1 IM, DIN 4102 Class B1, NF 92501-7 Class M1, NF D 60013 Class AM18, EN 1021 1&2, BS Crib 5.

Abrasion: Martindale 110.000 cycles.



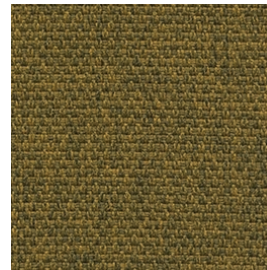
26E - Gris foncé



26A - Gris clair



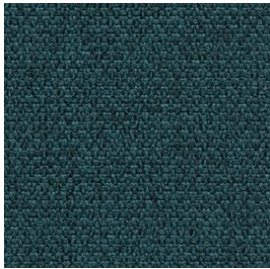
26F - Gris marron



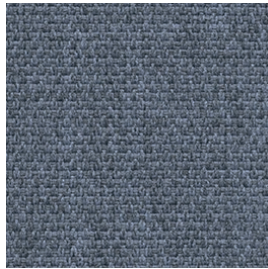
26G - Jaune moutarde



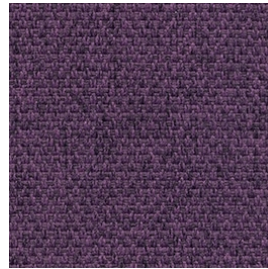
26D - Vert



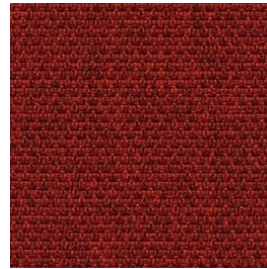
26L - Bleu pétrole



26C - Bleu clair



26M - Lilas



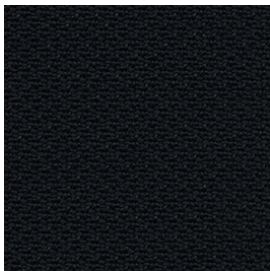
26B - Rouge

Sealife - Catégorie C

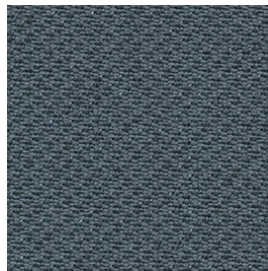
Composition : 100% polyester recyclé - Certifié Seaqual

Réaction au feu : UNI 9175 class 1 IM, EN 1021- 1&2, BS 7176 Class Low Hazard, California TB 117-2013

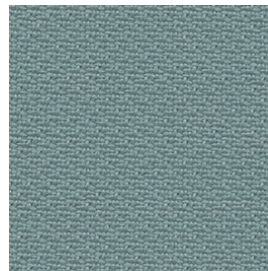
Abrasion : Martindale 100.000 cycles



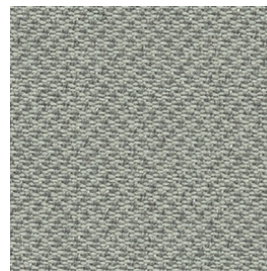
581 - Noir



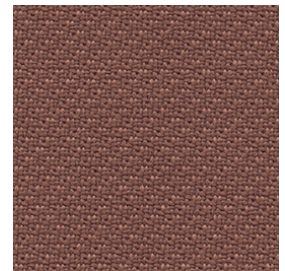
584 - Graphite



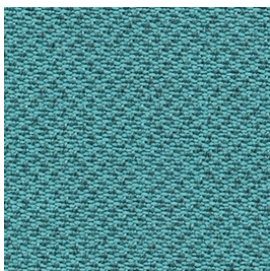
585 - Gris clair



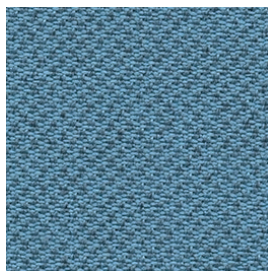
580 - Gris mélangé



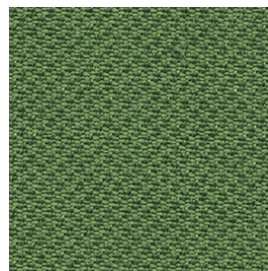
582 - Cuivre



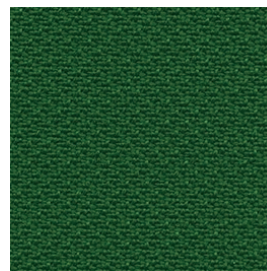
588 - Azur gris



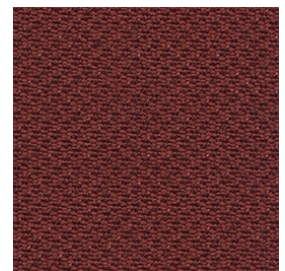
579 - Bleu clair



587 - Vert



586 - Vert foncé



583 - Bordeaux

Sotega - Catégorie C

Composition: 2% polyuréthane, 73% PVC, 25% coton
Abrasion: Martindale 50.000 cycles.



501 - Noir



573 - Gris foncé



503 - Gris moyen



505 - Gris clair



507 - Marron foncé



512 - Argile



511 - Cappuccino



510 - Beige



509 - Blanc



506 - Cerise

Step - Catégorie C

Composition : 100% Trevira CS
Réaction au feu: UNI 9175 Classe 1, Calif. Bull. 117 sec. E classe 1, CA TB 117-2013, IMO MSC 307 (88) Annex 1 part. 8,
MED Certificate IMO, DIN 4102 B1, NFP 92-503/504/505 M1, BS EN 1021 1&2, BS 5852 Part 1 0-1 Cigarette & match.
Abrasion : Martindale 100.000 cycles



346 - Noir



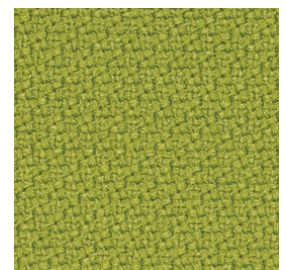
348 - Graphite



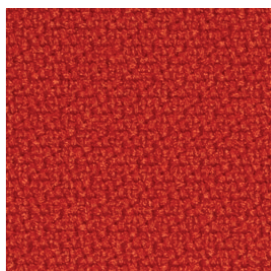
366 - Gris



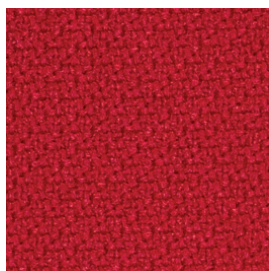
362 - Avio



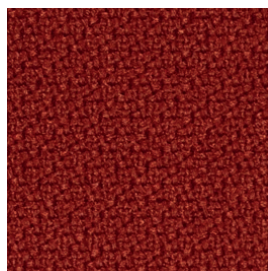
357 - Vert



358 - Orange



356 - Rouge



349 - Rouge brique

Step Melange - Catégorie C

Composition: 100% Trevira CS

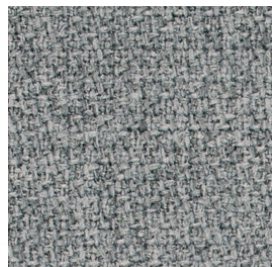
Réaction au feu: UNI 9175 Classe 1, Calif. Bull. 117 sec. E classe 1, CA TB 117-2013, IMO MSC 307 (88) Annex 1

part. 8, MED Certificate IMO, DIN 4102 B1, NFP 92-503/504/505 M1, BS EN 1021 1&2, BS 5852 Part 1 0-1 Cigarette & match

Abrasion: Martindale 100.000 cycles.



30G - Gris foncé



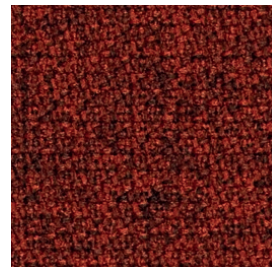
30C - Gris clair



30E - Beige



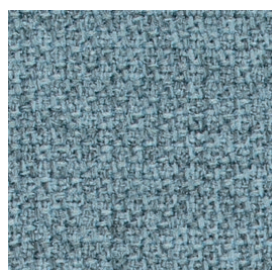
30F - Argile



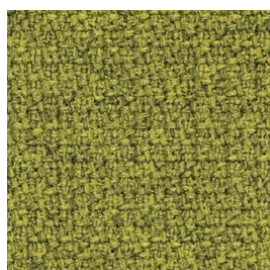
30L - Rouge brique



30D - Gris bleu



30B - Bleu clair



30A - Vert

Breeze Fusion - Catégorie F

Composition : 88% laine / 12% polyamide

Réaction au feu : BS 5852 Part 1 0-1 Cigarette & match, BS EN 1021 1&2, Calif. Bull. 117 sec. E classe 1, CA TB 117-2013

Abrasion : Martindale 100.000 cycles



742 - Beige gris



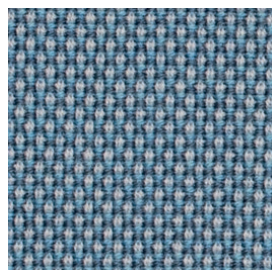
743 - Gris marron



744 - Gris graphite



745 - Graphite noir



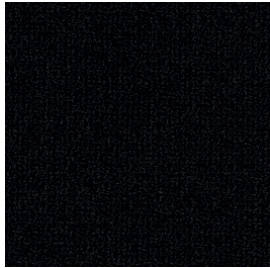
746 - Gris bleu clair

Grain - Catégorie F

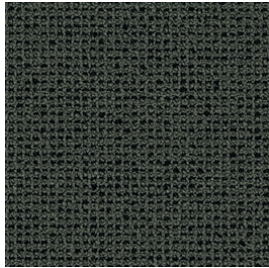
Composition: 92% polyester recyclé / 8% polyester

Réaction au feu: BS EN 1021 1&2 Cigarette and Match, BS EN 1021-1 Cigarette, CA TB 117-2013

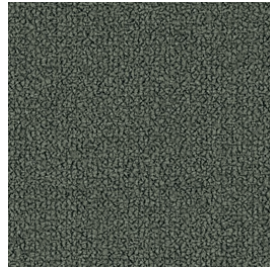
Abrasion: Martindale 100.000 cycles.



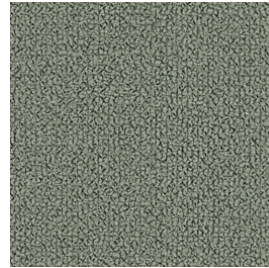
82A - Noir



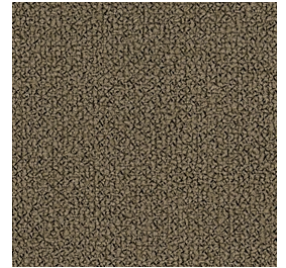
82C - Gris foncé mélangé



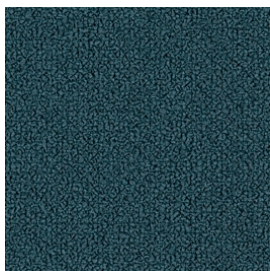
82B - Gris foncé



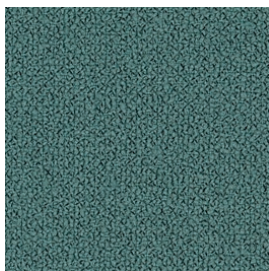
82D - Gris Moyen



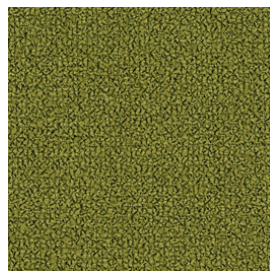
82E - Gris chaud



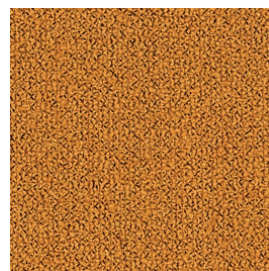
82M - Gris blue



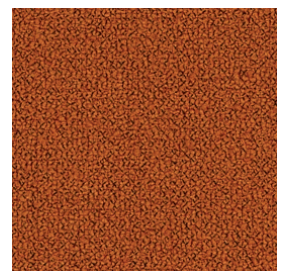
82L - Azur



82P - Vert



82F - Orange clair mélangé



82G - Brique mélangé

Cuir - Catégorie E

Composition: Cuir vachette pleine fleur



901 - Noir



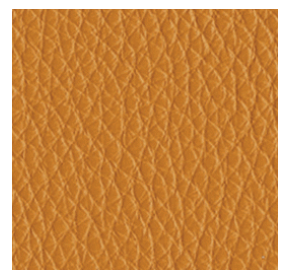
919 - Marron



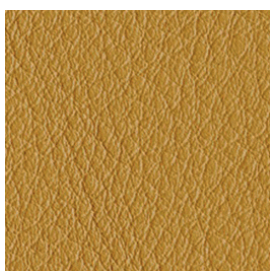
98G - Moka



984 - Tabac



918 - Naturel



913 - Havane



910 - Crème



98F - Sable



98C - Cappuccino



98D - Gris Ice

Cuir - Catégorie E

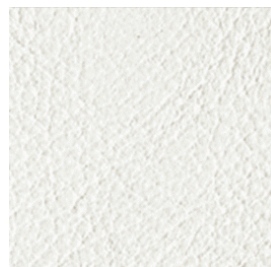
Composition: Cuir vachette pleine fleur



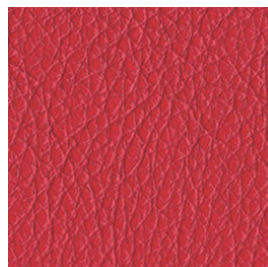
972 - Gris cendré



98H - Graphite



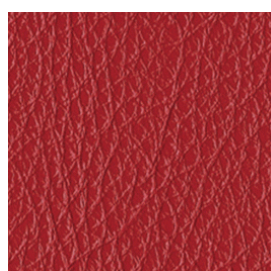
915 - Blanc glacé



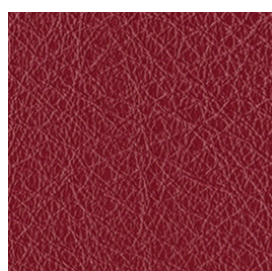
981 - Rouge



906 - Rouge brique



921 - Amarante



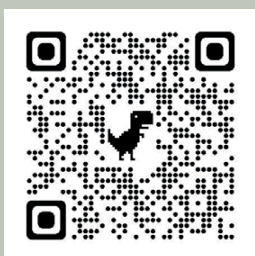
917 - Prune



98A - Vert pomme

EPOXIA

6 avenue Charles de Gaulle
78150 Le Chesnay
+33 1 39 66 00 77
contact@epoxia.com
www.epoxia.com



Rejoignez-nous sur nos réseaux sociaux

