

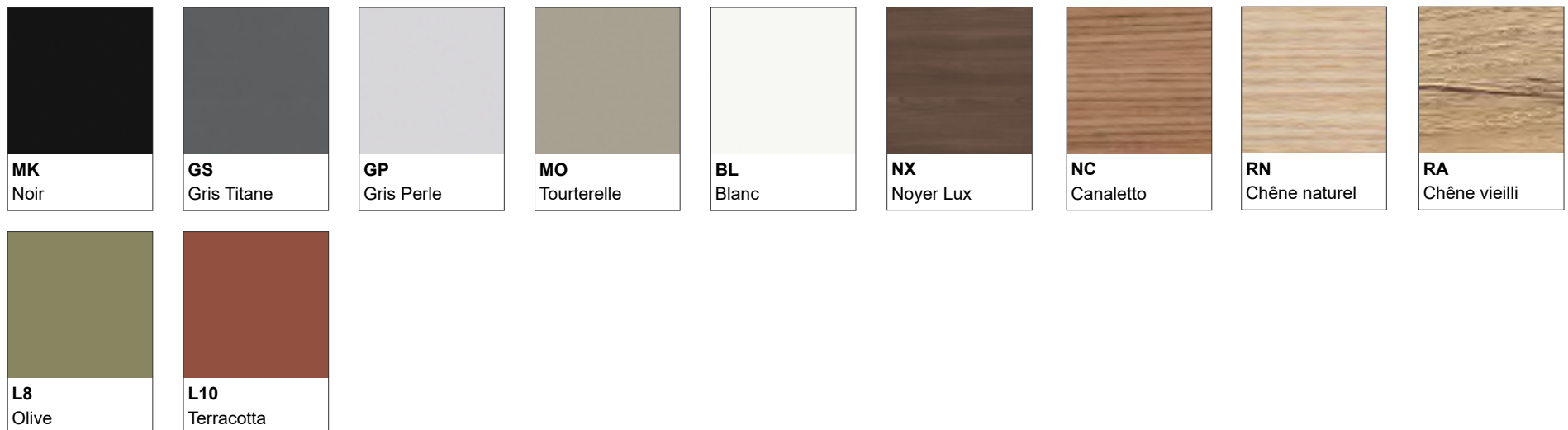
## Placage ébénisterie



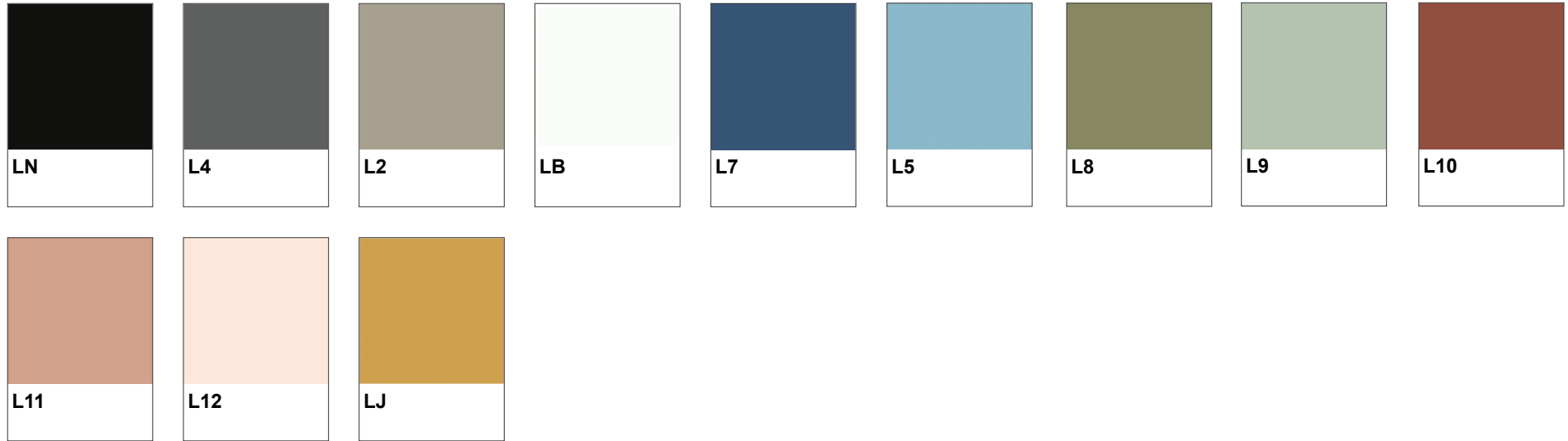
## Mé laminé



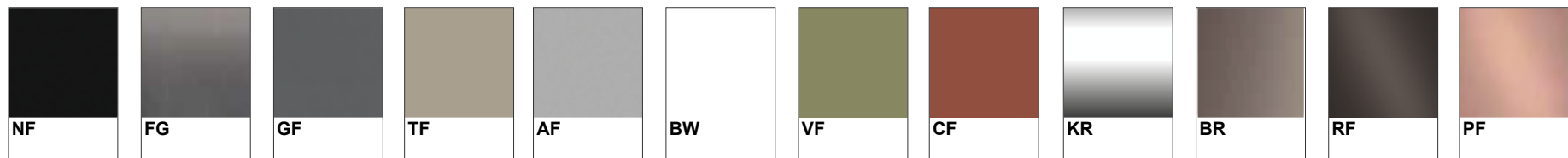
## Chant ABS



## Laque mate



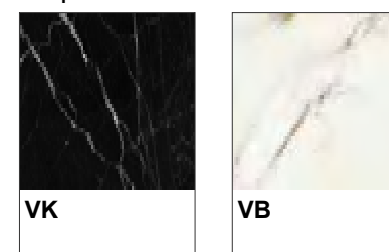
## Métal



## Acrylique brillant

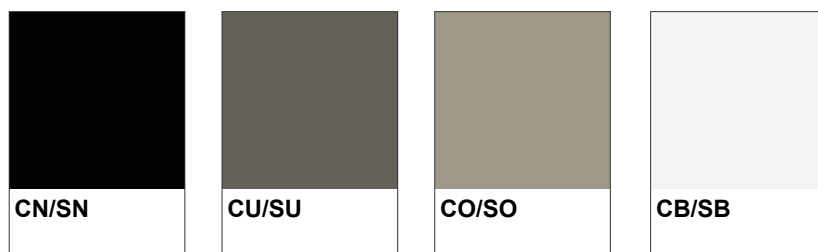


## Verre imprimé

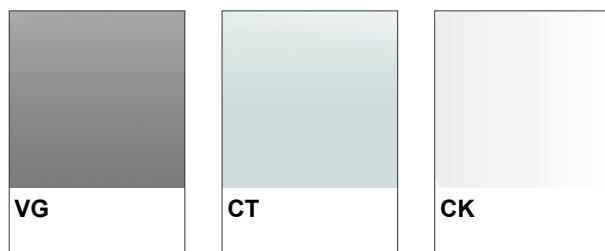


Verre rétro-laqué trempé : Brillant C\_ en surface ou Verre dépoli (opaque) S\_ en surface.

La finition dépolie S\_ est très douce au toucher, dans les coloris clairs, elles est également moins sensible aux traces de doigts. Pour un plateau noir la finition SN (surface dépolie) est à éviter, car très salissante, nous vous conseillons de choisir la finition brillante CN.



Verre trempé sans rétro-laquage (Verre trempé, brillant en surface, dépoli en sous-face).



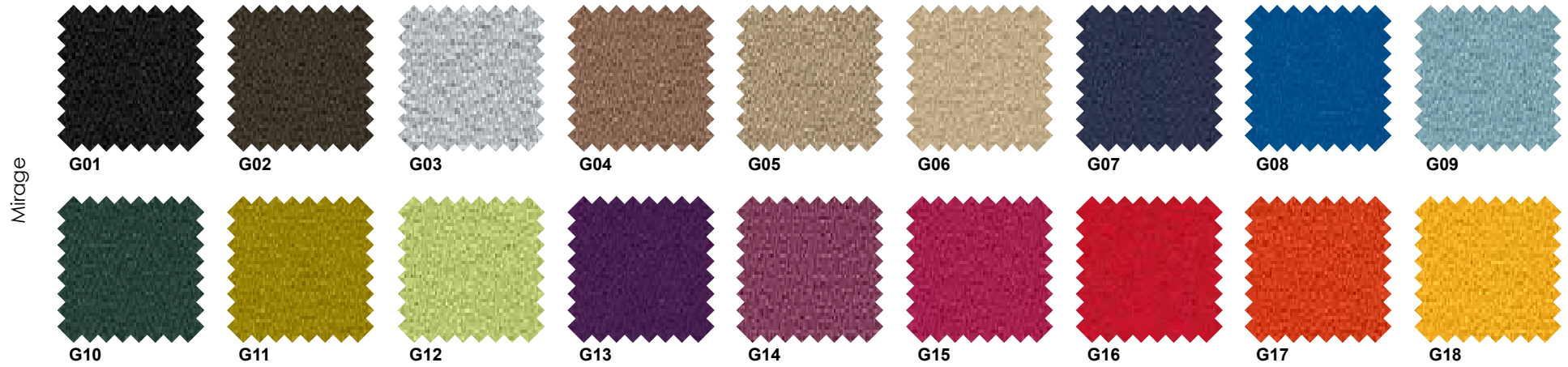
## Cuir PL1



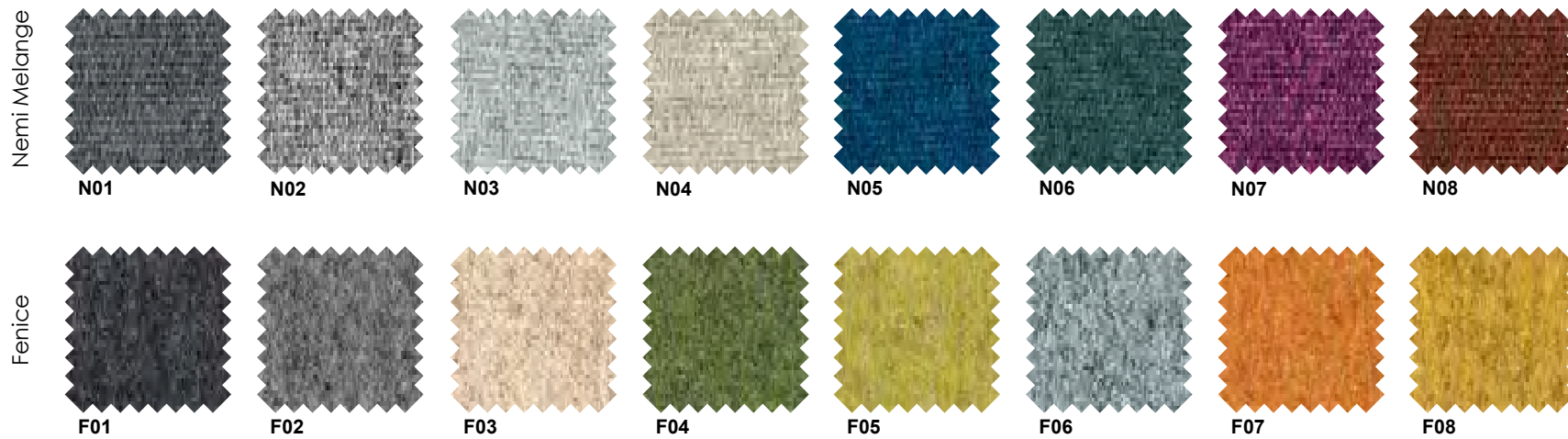
## Simili PE1



## Tissu cat. T1

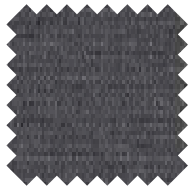


## Tissu cat. T2

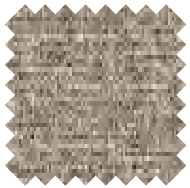


## Tissu cat. T2

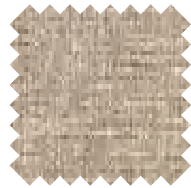
Convert Met 4000



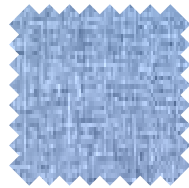
**C01**



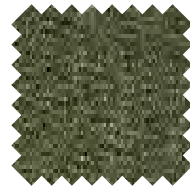
**C02**



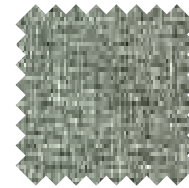
**C03**



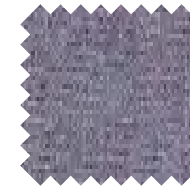
**C04**



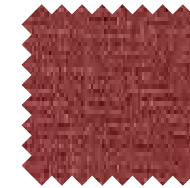
**C05**



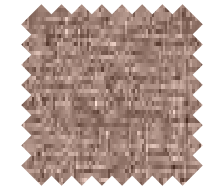
**C06**



**C07**



**C08**



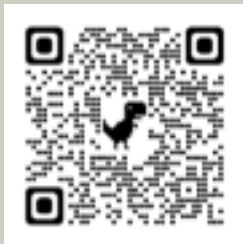
**C09**



**C10**

# EPOXIA

6 avenue Charles de Gaulle  
78150 Le Chesnay  
+33 1 39 66 00 77  
contact@epoxia.com  
www.epoxia.com



Rejoignez-nous sur nos réseaux sociaux

