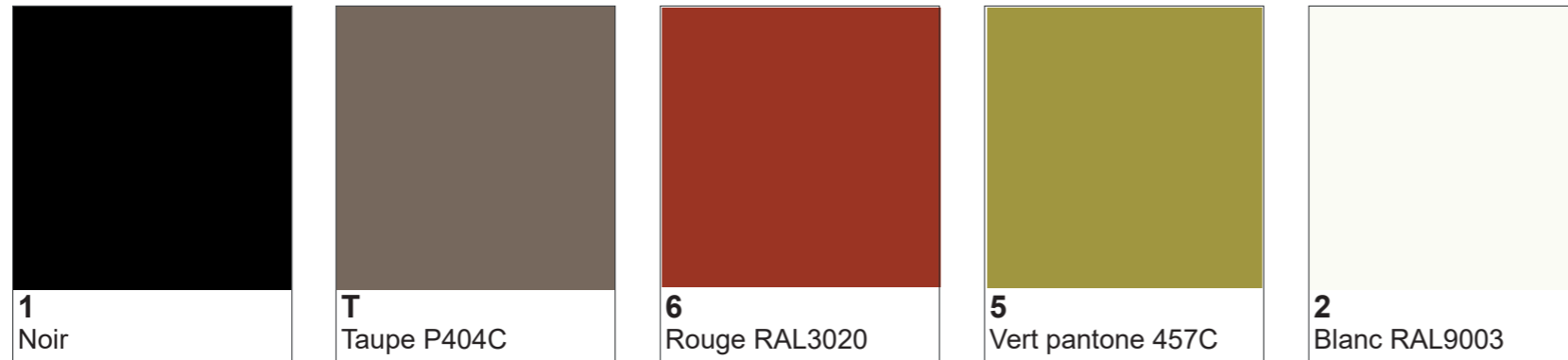


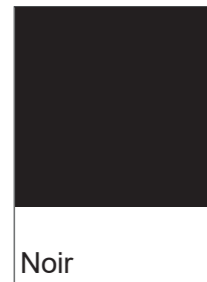
Coque

Polypropylène



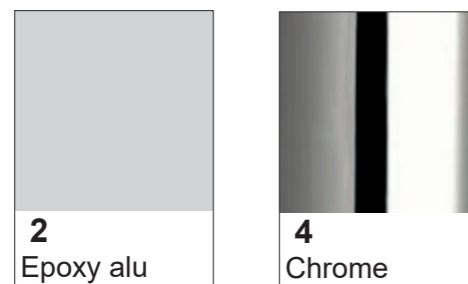
Piètement poutre

Structure métallique



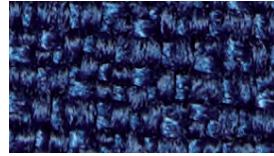
Piètement 4 pieds droits

Structure métallique

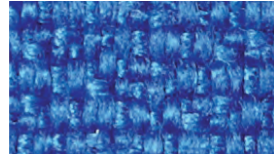


A

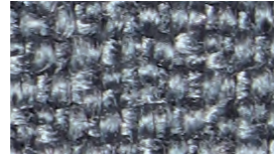
IMAGE | Polyoléfine



A M20 Bleu Marine



A M22 Bleu



A M2G Gris Moyen



A M6G Gris



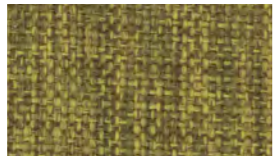
A M84 Noir

A

DEKORA | Polyoléfine



A DKR Rouge



A DKT Tilleul



A DKV Sapin



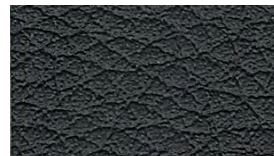
A DKG Grège



A DKB Beige

A

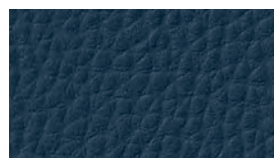
NAPEL | PVC



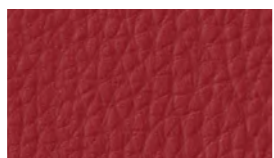
A NNO Noir

A

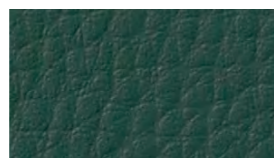
PUMA | PVC



A PMN Marine



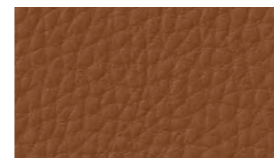
A PMR Rubis



A PMV Sapin



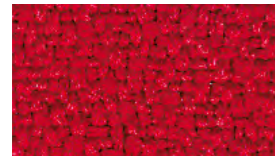
A PMG Gris



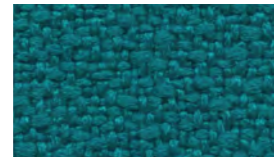
A PMC Caramel

B

X-TREVIRA | Polyester



B 079 Rouge Pur



B 160 Vert Canard



B 007 Turquoise



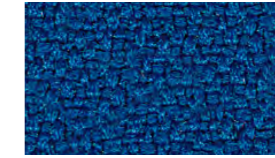
B 378 Magenta



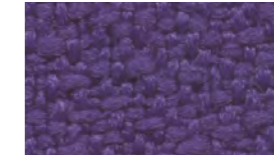
B 066 Rouille



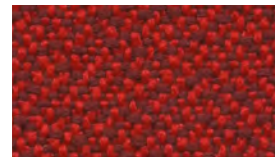
B 703 Vert Bouteille



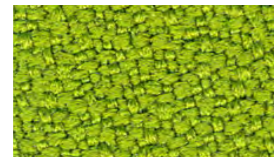
B 082 Bleu Roy



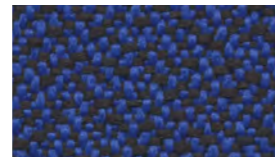
B 500 Violet



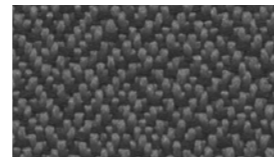
B 244 Rouge Duo



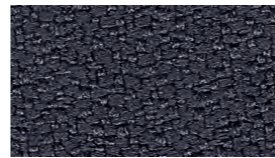
B 188 Vert Pistache



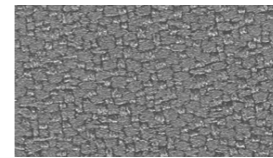
B 268 Bleu Duo



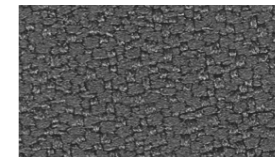
B 289 Gris Duo



B 172 Gris Anthracite



B 094 Gris



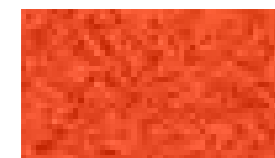
B 081 Gris Moyen



B 009 Noir

B

DIABOLO CLUB | PVC



B DCR Potiron



B DP0 Poirier



B DCC Cobalt



B DFU Fuchsia



B DCF Oriflamme



B DEL Éléphant



B D0R Orage



B DVL Violette



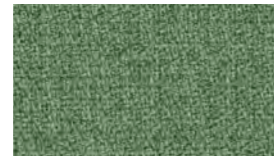
B DCA Anthracite

C

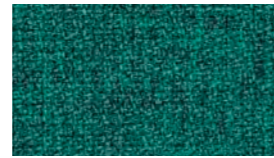
STEP Mélange | Polyester   M1



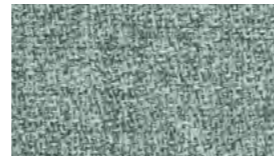
C SMJ Moutarde



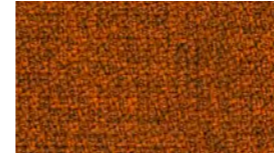
C SM6 Malachite



C SM7 Canard



C SME Eau



C SMP Paprika



C SML Lin



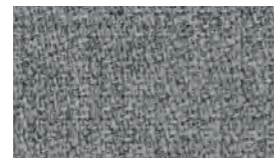
C SMH Horizon



C SM8 Lilas



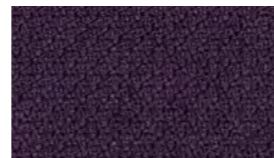
C SM5 Grenat



C SMB Béton



C SMN Nuit



C SM9 Aubergine



C SM1 Terracotta



C SMC Cendre



C SMG Gris Foncé

C

NOMA |  100% Polyester recyclé   M1



C NMJ Tournesol



C NMA Amande



C NMO Origan



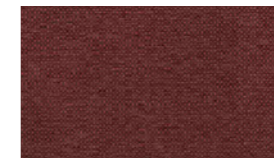
C NMV Jungle



C NML Lin



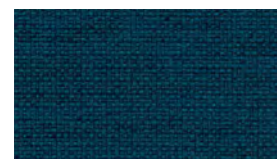
C NMR Vieux Rose



C NMN Lie de Vin



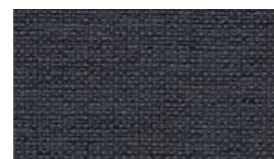
C NMS Souris



C NMD Indigo



C NMB Lagon



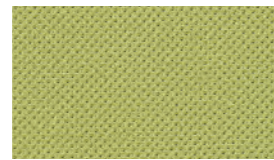
C NMG Gris

C

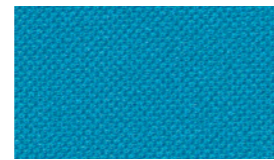
ATLANTIC | Polyester  



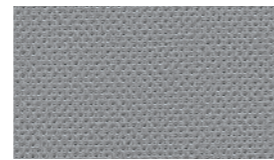
C AR0 Rouge



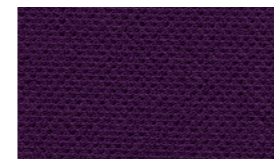
C AVA Vert Amande



C ATQ Bleu Turquoise



C AGS Gris



C AC0 Violet



C AVC Chlorophylle



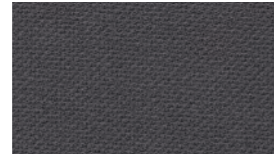
C ABL Bleu Roy



C ATE Terre



C AN0 Noir



C AGR Gris Moyen

C

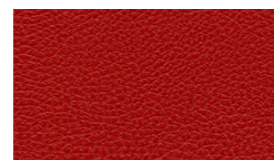
GINKGO | PVC   



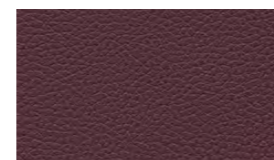
C 80M Jaune Mirabelle



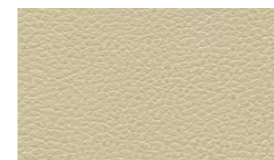
C 8CT Citrouille



C 80G Groseille



C 8QU Quetsche



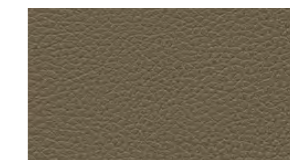
C 8SE Seigle



C 8TH Menthe



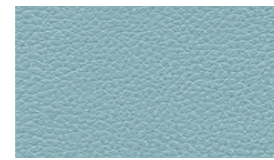
C 8VE Vert



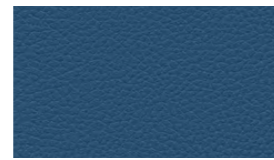
C 8TE Terre



C 8G1 Gris Pierre



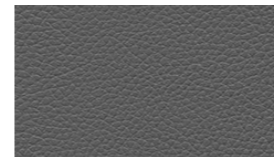
C 8A1 Aigue Marine



C 8PT Pétrole



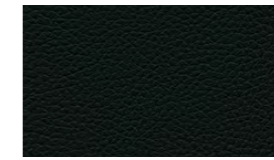
C 80N Bleu Nuit



C 80S Gris Souris



C 80C Chocolat



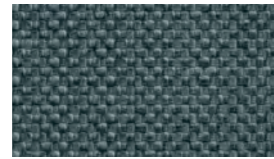
C 80A Anthracite

C

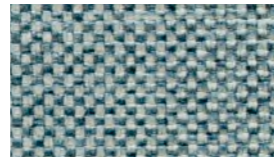
MAGLIA | PVC   (M2)



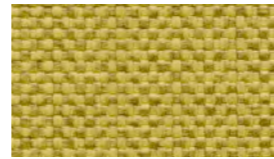
C MGM Marine



C MG0 Origan



C MGE Eau



MGL Tilleul



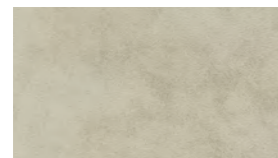
C MGT Tempête



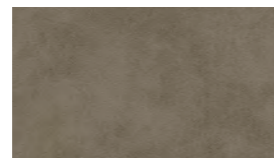
C MGB Brume

C

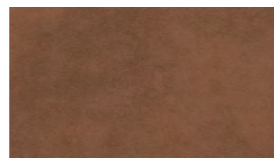
WINSTON | PVC   (M2)



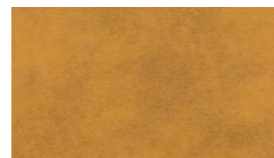
C WSF Fumée



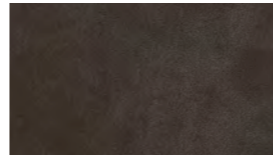
C WSG Mastic



C WSH Havane



C WSA Ambre



C WSM Marron



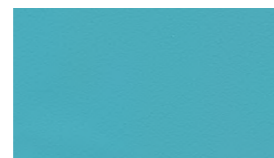
C WSC Châtaigne

C

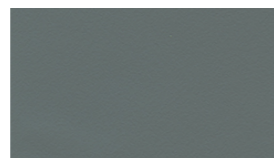
URBAN | PVC   (M1)



C URS Absinthe



C URT Turquoise



C URC Cendre



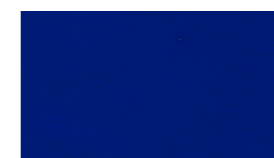
C URG Géranium



C UR0 Origan



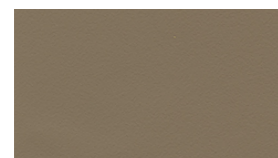
C URB Pétrole



C URA Alysse



C URR Réglisse



C URE Terre



C URH Chocolat



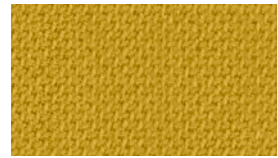
C URF Fuchsia



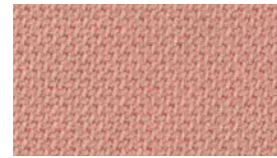
C URP Prune

D

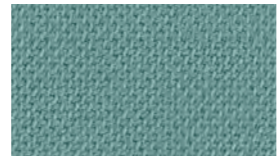
SELECT | Laine  



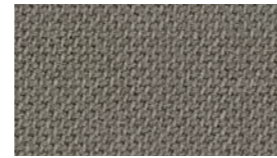
D SLB Bambou



D SLR Rose Poudré



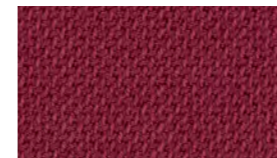
D SLV Eau



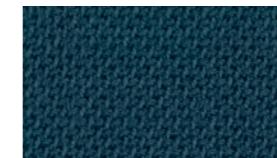
D SLS Souris



D SLC Citrouille



D SLF Framboise



D SLM Marine



D SLP Pétrole



D SLN Noir



D SLG Gris



D SLE Emeraude

D

24N |  Nyl



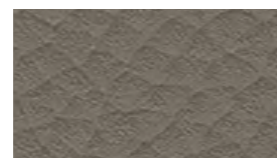
D 24N Noir

E/H

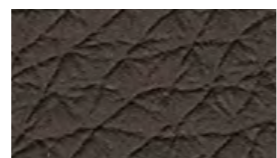
CUIR |   



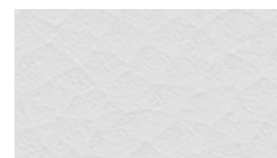
H CVR Ivoire



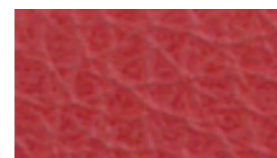
H CTA Taupe



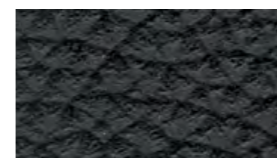
H CHL Chocolat



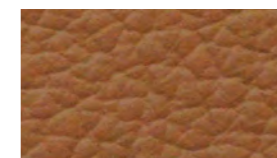
H CCR Blanc Crème



H CRU Rouge



E CN0 Noir



H CCA Caramel



H CGS Gris

R

RESILLE | MESH | MALLA

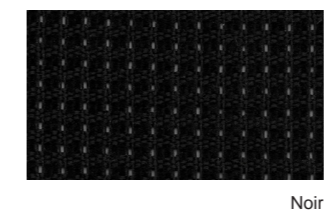
Tertio - Adela - Amets - Flipper - Kyos^(a) - Smash - Alaia | Polyester



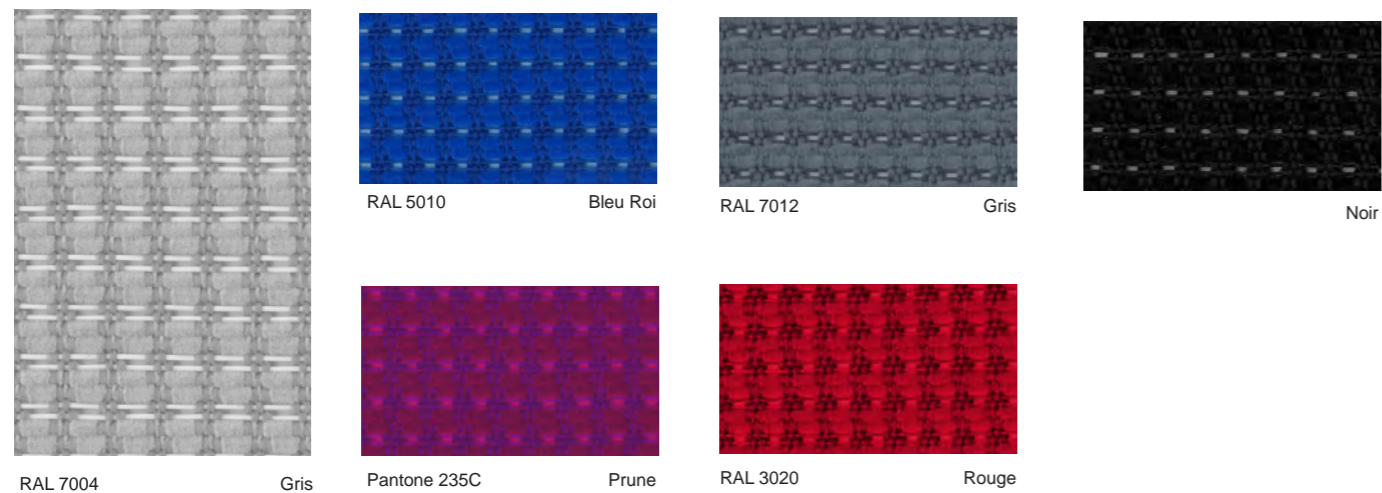
Alaia | 76% Polyester recyclé



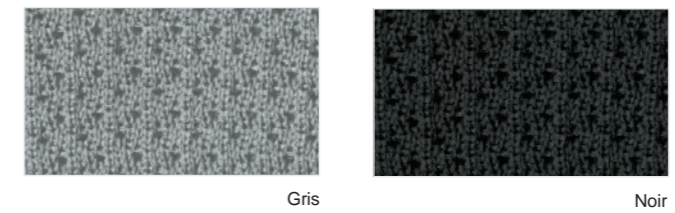
Tertio^{RR} | Polyelastomer



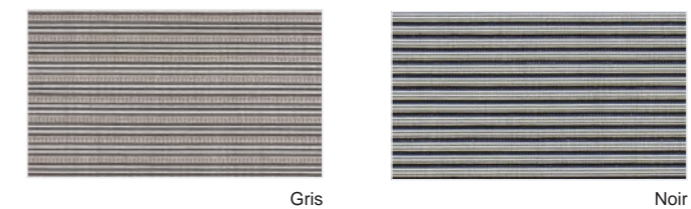
Wi-Max - Kyos^(b) | Polyester



Cloe - Tela | Polyester



Luma | Polyelastomer



A

IMAGE	100% Polyoléfine	300 g/m ²	100 000 cycles	6/7	EN 1021-1 Cigarette BS 5852 0	Oeko-Tex	Aspirateur / Chiffon humide et savon doux. Vaccum / Wet cloth and soft soap. Aspirador / Paño humedo y jabón neutro.	Chiffon imbibé d'Ethanol. Cloth soaked in Ethanol. Paño empapado en Etanol.
DEKORA	100% Polyoléfine	255 g/m ²	100 000 cycles	5/6	EN 1021-1 Cigarette BS 5852 0	Oeko-Tex	Aspirateur / Chiffon humide et savon doux. Vaccum / Wet cloth and soft soap. Aspirador / Paño humedo y jabón neutro.	Chiffon imbibé d'Ethanol. Cloth soaked in Ethanol. Paño empapado en Etanol.
PUMA	87% PVC 6,5% PES 6,5% CO	700 g/m ²	100 000 cycles	5/6	EN 1021-1 Cigarette EN 1021-2 Allumette BS 5852 0/1	O	Aspirateur / Chiffon humide et savon doux. Vaccum / Wet cloth and soft soap. Aspirador / Paño humedo y jabón neutro.	Tout détergent, solvant, solution alcoolique sont à éviter. Avoid all kinds of detergent, solvent or hydroalcoholic solution. Evitar todos los detergentes, disolventes o solución hidroalcohólica.
NAPEL	89,5 % PVC 10,5 % PES	660 g/m ²	50 000 cycles ⁽¹⁾	>6	O	O	Eponge humide et savon doux. Wet sponge and soft soap. Esponja humeda y jabón suave.	Spray désinfectant suivi d'un rinçage à l'eau clair. Disinfectant spray followed by rinsing with clear water. Spray desinfectante seguido de enjuague con agua limpia.

B

X-TREVIRA	100% Polyester Trévira CS	300 g/m ²	100 000 cycles	6	EN 1021-1 Cigarette EN 1021-2 Allumette M1 AM18 ⁽²⁾ NF D 60013 BS 7176 Medium Hazard	Oeko-Tex EU Ecolabel	Aspirateur / Eponge humide et savon doux. Vaccum / Wet sponge and soft soap. Aspirador / Esponja humeda y jabón suave.	Tout détergent, solvant, solution alcoolique sont à éviter. Avoid all kinds of detergent, solvent or hydroalcoholic solution. Evitar todos los detergentes, disolventes o solución hidroalcohólica.
DIABOLO CLUB	85% PVC 15% coton	750 g/m ²	150 000 cycles ⁽¹⁾	>6	EN 1021-1 Cigarette EN 1021-2 Allumette M1 AM18 ⁽²⁾ BS 5852 crib 5	Sanitized Phtalates free	Eponge humide et savon doux. Wet sponge and soft soap. Esponja humeda y jabón suave.	Spray désinfectant suivi d'un rinçage à l'eau clair. Disinfectant spray followed by rinsing with clear water. Spray desinfectante seguido de enjuague con agua limpia.

R

TERTIO ADELA ALAIA AMETS FLIPPER KYOS SMASH	100% Polyester	340 g/m ²	100 000 cycles	5	EN 1021-1 Cigarette	Oeko-Tex	Gamme R: Range R: Gama R:	Gamme R: Range R: Gama R:
Wi-MAX KYOS	55% Polyester 45% Polyamide	280 g/m ²	100 000 cycles	6	EN 1021-1 Cigarette	Oeko-Tex	Aspirateur / Eponge humide et savon doux. Vaccum / Wet sponge and soft soap. Aspirador / Esponja humeda y jabón suave.	Chiffon imbibé d'Ethanol. Cloth soaked in Ethanol. Paño empapado en Etanol.
LUMA	50,9% Polyelastomer 49,1% Nylon	442 g/m ²	100 000 cycles	>5	EN 1021-1 Cigarette	Oeko-Tex		
ALAIA	76% Polyester recyclé 24% Polyester	430 g/m ²	100 000 cycles + Garantie 10 ans	5-8	EN 1021-1 Cigarette EN 1021-2 Allumette	Oeko-Tex Cradle to Cradle		
TERTIO ^{RR}	64% Polyelastomer 36% Polyester	426 g/m ²	100 000 cycles	4-5	California Technical Bulletin 117 Section E : 2000	Oeko-Tex		
CLOE TELA	100% Polyester	389 g/m ²	100 000 cycles	6	EN 1021-1 Cigarette	Oeko-Tex		

⁽¹⁾ ISO 5470-2

⁽²⁾ Avec une mousse ignifugée type CMHR / With combustion modified high resilience foam / Con espuma de alta resiliencia modificada por combustión

Plus d'infos sur / More information on / Más información en appli.sokoa.com & sokoa.com

C

ATLANTIC	100% Polyester	350 g/m ²	110 000 cycles + Garantie 10 ans	5-7	EN 1021-1 Cigarette EN 1021-2 Allumette	Oeko-Tex EU Ecolabel	Aspirateur / Eponge humide et savon doux. Vaccum / Wet sponge and soft soap. Aspirador / Esponja humeda y jabón suave.	Chiffon imbibé d'Ethanol. Cloth soaked in Ethanol. Paño empapado en Etanol.
NOMA	100% Polyester recyclé	314 g/m ²	60 000 cycles + Garantie 10 ans	5-8	EN 1021-1 Cigarette EN 1021-2 Allumette BS 5852 crib 5 M1 AM18 ⁽²⁾	Oeko-Tex	Aspirateur / Eponge humide et savon doux. Vaccum / Wet sponge and soft soap. Aspirador / Esponja humeda y jabón suave.	Chiffon imbibé d'Ethanol. Cloth soaked in Ethanol. Paño empapado en Etanol.
STEP MELANGE	100% Polyester Trévira CS	336 g/m ²	100 000 cycles + Garantie 10 ans	5-7	EN 1021-1 Cigarette EN 1021-2 Allumette BS 5852 crib 5 M1 AM18 ⁽²⁾	Oeko-Tex EU Ecolabel	Aspirateur / Eponge humide et savon doux. Vaccum / Wet sponge and soft soap. Aspirador / Esponja humeda y jabón suave.	Chiffon imbibé d'Ethanol. Cloth soaked in Ethanol. Paño empapado en Etanol.
GINKGO	85% PVC 15% Coton	830 g/m ²	150 000 cycles ⁽¹⁾	>6	EN 1021-1 Cigarette EN 1021-2 Allumette BS 5852 crib 5 M1 AM18 ⁽²⁾	Sanitized Phtalates free	Eponge humide et savon doux. Wet sponge and soft soap. Esponja humeda y jabón suave.	Spray désinfectant suivi d'un rinçage à l'eau clair. Disinfectant spray followed by rinsing with clear water. Spray desinfectante seguido de enjuague con agua limpia.
URBAN	85% PVC 15% Coton Indoor/Outdoor	820 g/m ²	150 000 cycles ⁽¹⁾	>6	EN 1021-1 Cigarette EN 1021-2 Allumette BS 5852 crib 5 M1 AM18 ⁽²⁾	Sanitized Phtalates free	Eponge humide et savon doux. Wet sponge and soft soap. Esponja humeda y jabón suave.	idem
MAGLIA	81% PVC 19% Polyester Indoor/Outdoor	680 g/m ²	100 000 cycles	7/8	EN 1021-1 Cigarette EN 1021-2 Allumette M2	Permablok Phtalates free	Eponge humide et savon doux. Wet sponge and soft soap. Esponja humeda y jabón suave.	Spray désinfectant suivi d'un rinçage à l'eau clair. Disinfectant spray followed by rinsing with clear water. Spray desinfectante seguido de enjuague con agua limpia.
WINSTON	83% PVC 3% PU 14% PES/Cotton	620 g/m ²	80 000 cycles ⁽¹⁾	>6	EN 1021-1 Cigarette EN 1021-2 Allumette BS 5852 crib 5 M2 AM18	Sanitized Phtalates free	Eponge humide et savon doux. Wet sponge and soft soap. Esponja humeda y jabón suave.	idem

D

SELECT	85% Laine 15% Polyamide	364 g/m ²	200 000 cycles + Garantie 10 ans	5-8	EN 1021-1 Cigarette EN 1021-2 Allumette BS 5852 crib 5	Oeko-Tex EU Ecolabel	Aspirateur / Nettoyage à sec. Vaccum / Dry clean. Aspirador / Limpieza en seco.	Chiffon imbibé d'Ethanol. ⁽³⁾ Cloth soaked in Ethanol. ⁽³⁾ Paño empapado en Etanol. ⁽³⁾
24N	100% Nylon	422 g/m ²	1 000 000 cycles ⁽⁴⁾	4	California Technical Bulletin 117-2013, section 1	O	Aspirateur / Eponge humide et savon doux. Vaccum / Wet sponge and soft soap. Aspirador / Esponja humeda y jabón suave.	Chiffon imbibé d'Ethanol. Cloth soaked in Ethanol. Paño empapado en Etanol.

E/H

CUIR	Cuir vachette fleur corrigée pigmentée Pigmented finish cow leather Cuero vacuno acabado pigmentado	Epaisseur 1 à 1,1 mm	<p>Nos peaux sont soigneusement choisies parmi des cuirs européens de premier choix. Le cuir est un produit de valeur dont l'aspect naturel garantit le caractère noble. Volontairement les marques de la peau de l'animal n'ont pas été entièrement dissimulées par le pigment car elles contribuent à la caractéristique naturelle du produit. Le choix du cuir implique aussi l'acceptation de marques de la nature (rides de collet, égratignures, piqûres d'insecte...) d'une matière procurant plaisir de contact, solidité et confort pendant longtemps.</p> <p>Our skins are carefully selected from European high quality leathers. Leather is a valuable product which natural appearance guarantees noble character. Voluntarily blemishes of the skin of the animal have not been totally concealed by the pigment as they assure the natural characteristic of the product. The choice of leather also implies the acceptance of nature's blemishes (collar lines, scratches, insect bites ...) of a durable material providing pleasure of touch and comfort for a long time.</p> <p>Las pieles que utilizamos han sido seleccionadas entre las pieles europeas de primeras marcas. El cuero es un producto de valor cuyo aspecto natural garantiza el carácter noble. Voluntariamente las imperfecciones de la piel del animal no se han quitado del todo con el pigmentado porque son características naturales del producto. La elección de pieles implica también la aceptación de marcas (arrugas de cuello, arañazos, picaduras de insecto...) de una materia agradable al tacto y durable en el tiempo.</p>		EN 1021-1 Cigarette EN 1021-2 Allumette	Nettoyage avec une éponge humide légèrement savonneuse. Sécher à la peau de chamois. Cire d'abeille selon désir. To clean with a humid sponge lightly soaping. Dry with shabby leather. Wax can be used. Limpieza con una esponja humeda ligeramente enjabonada. Secar la piel. Encerar si lo estima necesari.	L'eau savonneuse emporte les micro-particules du virus. N'appliquez aucun produit contenant de l'alcool. The soapy water carries away the microparticles of the virus. Do not apply any product that contains alcohol. El agua jabonosa se lleva las micropartículas del virus. No aplicar ningún producto que contenga alcohol.
------	---	----------------------	--	--	--	---	--

⁽¹⁾ ISO 5470-2

⁽²⁾ Avec une mousse ignifugée type CMHR
With combustion modified high resilience foam
Con espuma de alta resiliencia modificada por combustión

⁽³⁾ Mise en quarantaine du mobilier recommandée ; la désinfection à l'éthanol peut altérer le tissu laine.
Quarantining the furniture is recommended ; disinfection with ethanol can alter the fabric made of wool.
Se recomienda poner en cuarentena em mobiliario; la desinfección con etanol puede alterar el tejido con lana.

⁽⁴⁾ ASTM D4966-12

Résistance au feu : M1 M2 EN 1021-1 Cigarette EN 1021-2 Allumette

epOXIA

6 avenue Charles de Gaulle
78150 Le Chesnay
+33 1 39 66 00 77
contact@epoxia.com
www.epoxia.com



Rejoignez-nous sur nos réseaux sociaux

