

FORMES ET COULEURS

Collection KALEIDO

GARANTIE
2
ANS

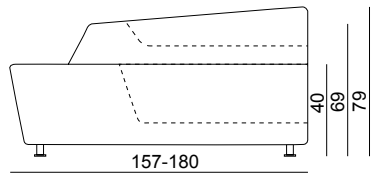
MONTAGE
OFFERT*
* voir nos conditions

MADE IN
EUROPE

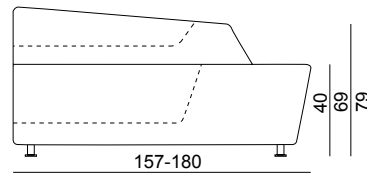
epoxia

01 39 66 00 77

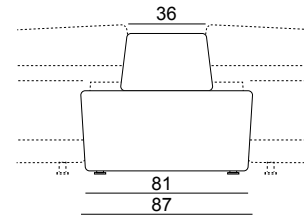
Canapé modulaire - *uni ou bicolore*



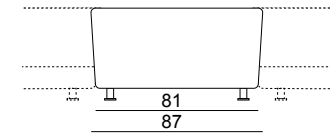
Elément droit (existe aussi en bicolore)



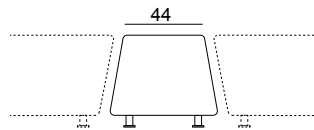
Elément gauche (existe aussi en bicolore)



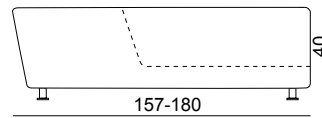
Elément angulaire (existe en bicolore)



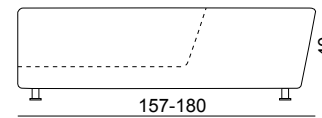
Elément angulaire



Elément de liaison

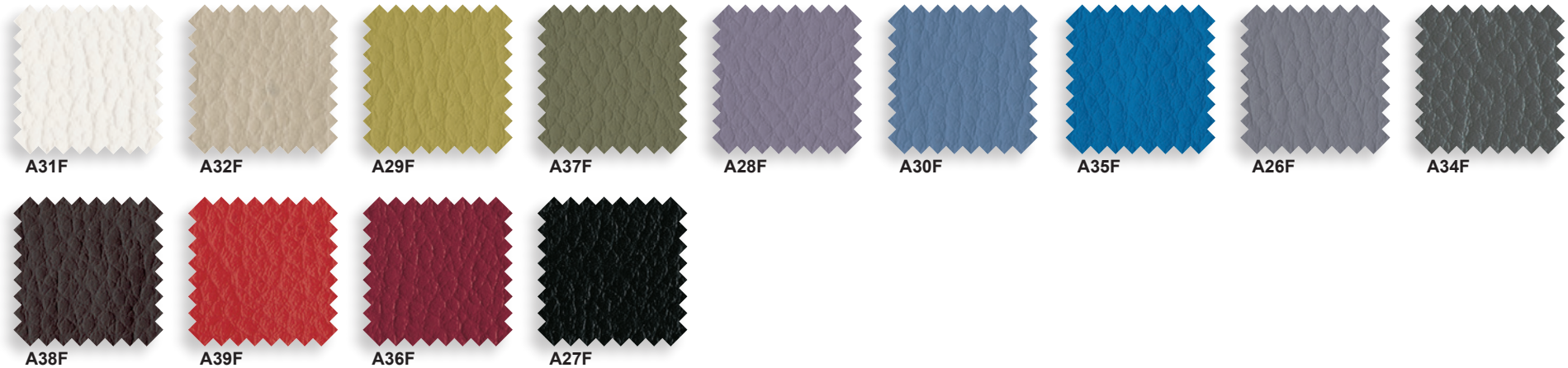


Elément droit

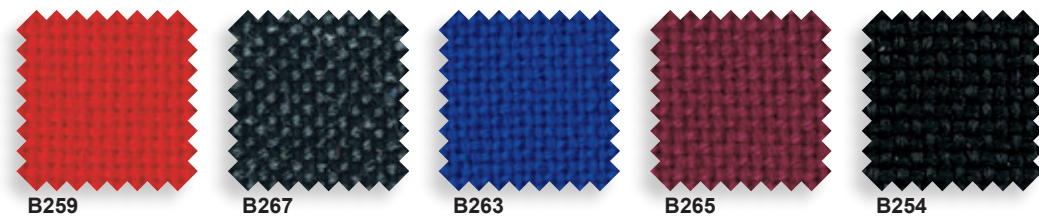


Elément gauche

Planet - imitation cuir catégorie A - Martindale 100 000 - 87,5% PVC 12,5% coton. Non feu EN1021



Tissu - catégorie B - Martindale 80 000 - 100% polypropylène



FORMES ET COULEURS

Collection KALEIDO



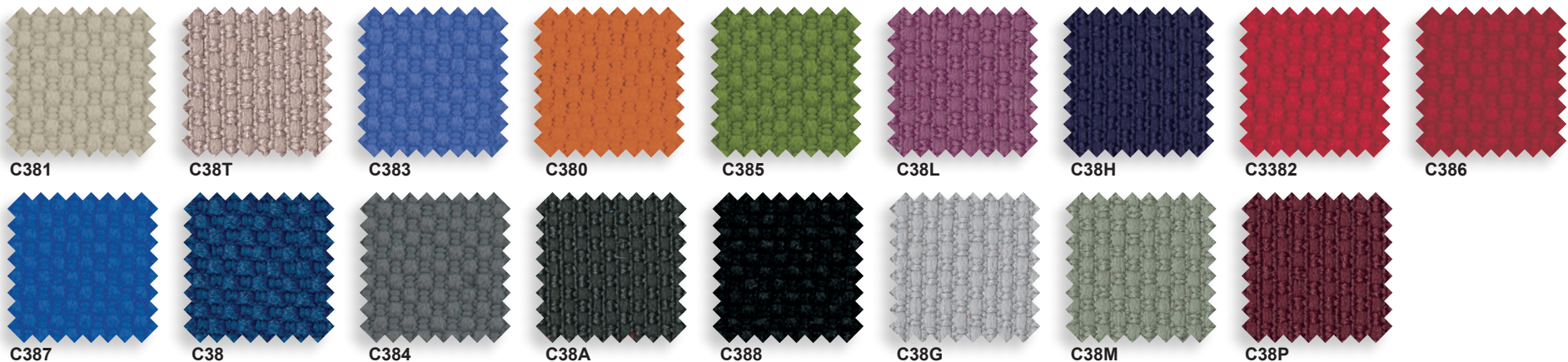
epoxia

01 39 66 00 77

Skill - imitation cuir catégorie C - Martindale 60 000 - 76% PVC, 2%PU, 22%PES. Non feu EN 1021.

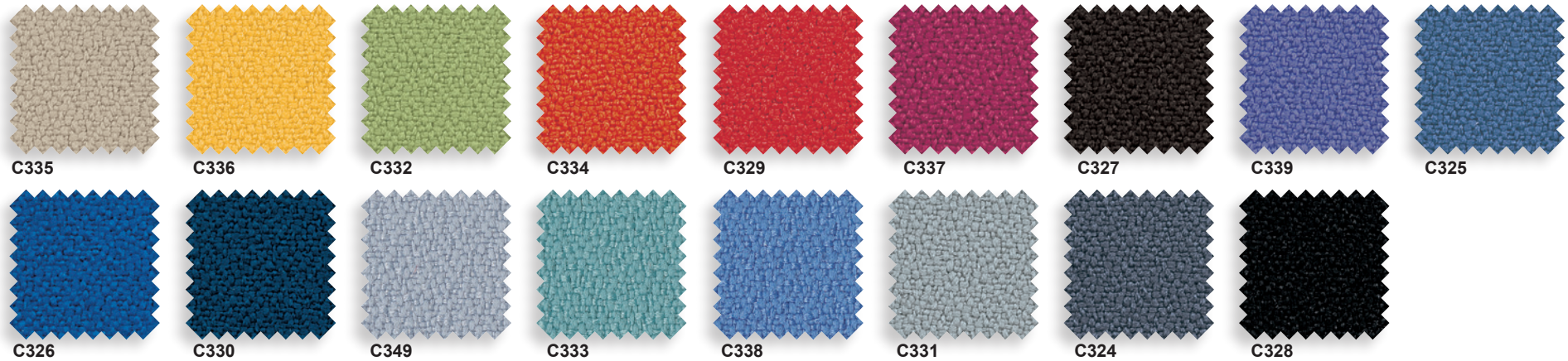


Trevi - tissu catégorie C - Martindale 70 000 - 100% Polyester

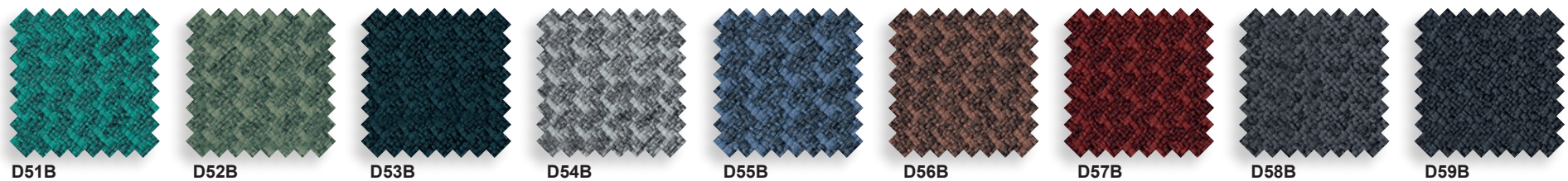


La restitution des couleurs des nuanciers n'est pas contractuelle car les couleurs présentées sur un écran d'ordinateur peuvent varier selon la configuration du poste.

Xtreme - tissu catégorie C - Martindale 100 000 - *100% Xtreme. Non feu EN 1021.*



Bond - tissu catégorie D - Martindale 100 000 - *98% Polyester recyclé, 2% polyester. Non feu EN 1021.*



FORMES ET COULEURS

Collection KALEIDO



ePOXIA

01 39 66 00 77

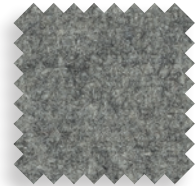
Fenice - tissu catégorie D - Martindale 100 000 - *75% laine, 25% Polyamide. Non feu EN 1021.*



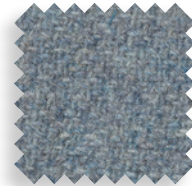
D501



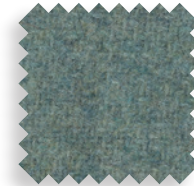
D502



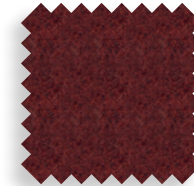
D503



D504



D505



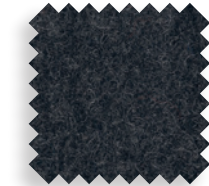
D506



D507



D508

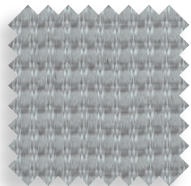


D509

Tissu résille - catégorie D - Martindale 100 000 - *64% PL, 36% PA.*



D218



D221



D222

Extrema Ultra Fresh - imitation cuir catégorie D - Martindale 150 000 - *63% Polyuréthane, 29% coton, 8% PES. Non feu 1021.*



D420



D426



D430



D427



D431



D421



D423



D432



D422



D425



D428



D424



D429

La restitution des couleurs des nuanciers n'est pas contractuelle car les couleurs présentées sur un écran d'ordinateur peuvent varier selon la configuration du poste.

Epoxia | 6, avenue Charles de Gaulle | 78150 Le Chesnay | www.epoxia.com | contact@epoxia.com

FORMES ET COULEURS

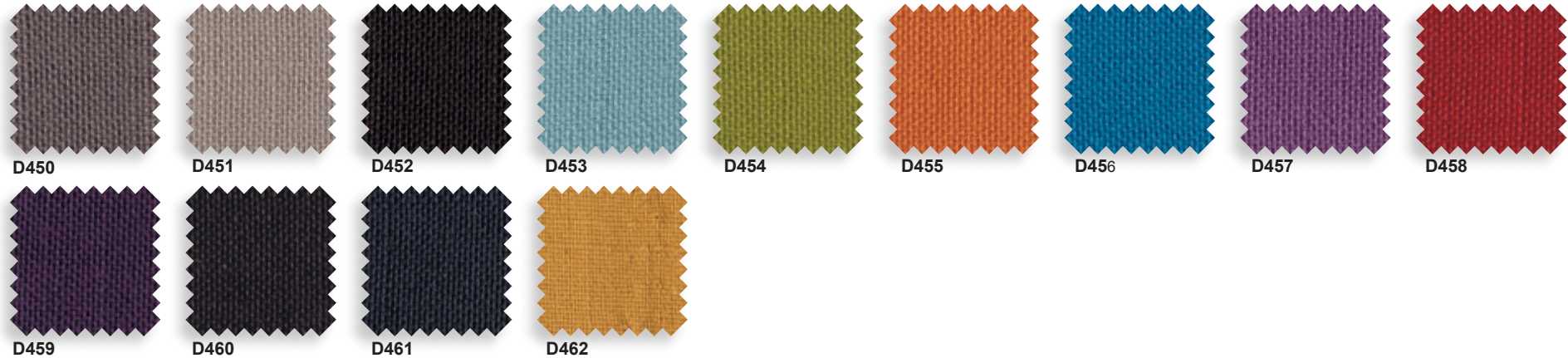
Collection KALEIDO



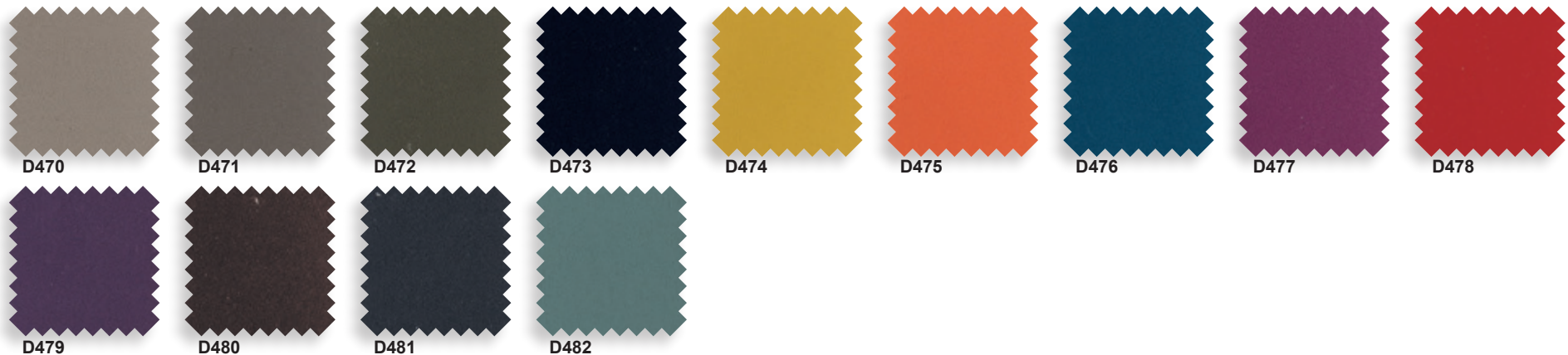
ePOXIA

01 39 66 00 77

Esedra - tissu catégorie D - Martindale 60 000 - 100% PES. Non feu 1021.



Extrema Ikon - imitation cuir catégorie D - Martindale 150 000 - 63% Polyuréthane, 29% coton, 8% PES. Non feu 1021.



La restitution des couleurs des nuanciers n'est pas contractuelle car les couleurs présentées sur un écran d'ordinateur peuvent varier selon la configuration du poste.

Epoxia | 6, avenue Charles de Gaulle | 78150 Le Chesnay | www.epoxia.com | contact@epoxia.com

FORMES ET COULEURS

Collection KALEIDO

GARANTIE
2
ANS

MONTAGE
OFFERT*
* voir nos conditions

MADE IN
EUROPE

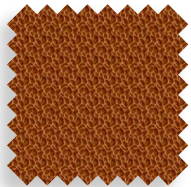
epoxia

01 39 66 00 77

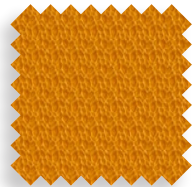
Hitch® - vinyl catégorie D - Martindale >100 000 - 100% Polyester



D802



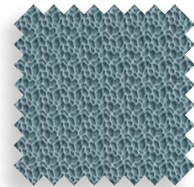
D803



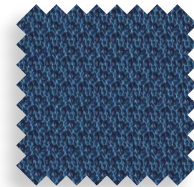
D801



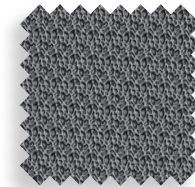
D804



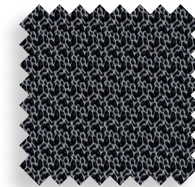
D806



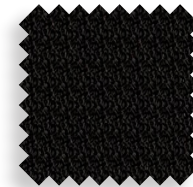
D808



D805

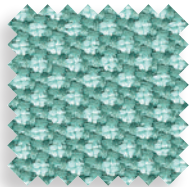


D807

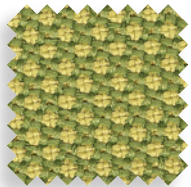


D809

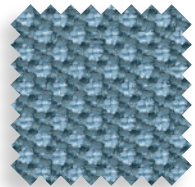
Repetto - catégorie D - Martindale 100 000 - 100% Polyester. Non feu EN 1021.



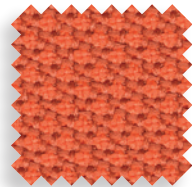
D40R



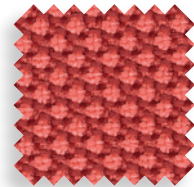
D41R



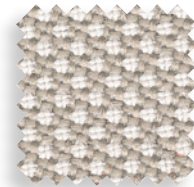
D42R



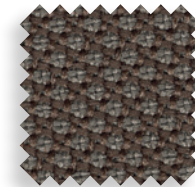
D43R



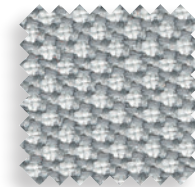
D44R



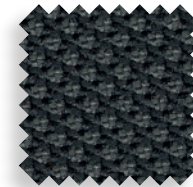
D45R



D46R



D47R



D48R